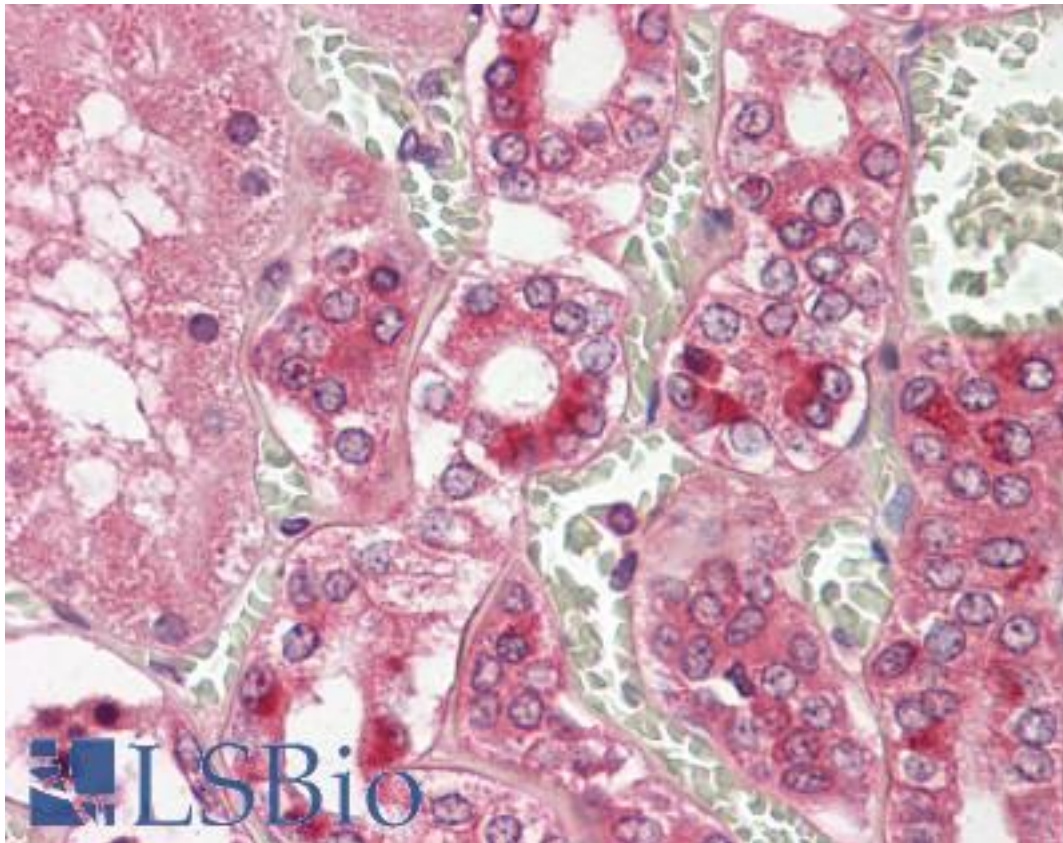


CTSV / Cathepsin V Rabbit anti-Human Polyclonal Antibody - LS-B8747 - LSBio

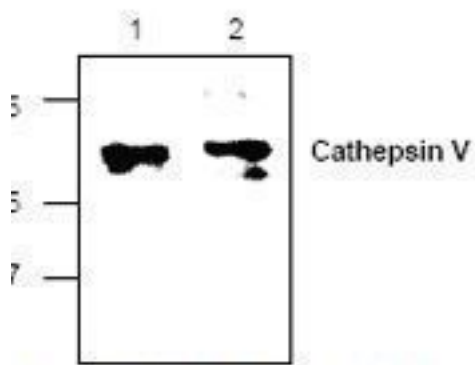
<b>CatalogID:</b>	LS-B8747
<b>Validation:</b>	This antibody replaces catalog number LS-C48650. It has been validated for use in the following assays: IHC-P.
<b>Target:</b>	Cathepsin V (CTSV)
<b>Synonyms:</b>	CTSV Antibody, Cathepsin L2 Antibody, Cathepsin L2, preproprotein Antibody, Cathepsin V Antibody, Cathepsin U Antibody, CTSU Antibody, CATL2 Antibody, CTSL2 Antibody
<b>Family / Subfamily:</b>	Protease / Cysteine C1
<b>Host</b>	CTSV antibody was produced in Rabbit
<b>Clonality:</b>	Polyclonal
<b>Isotype:</b>	IgG
<b>Immunogen Species:</b>	CTSV / Cathepsin V antibody was raised against Human
<b>Antigen Type:</b>	Synthetic peptide
<b>Immunogen:</b>	CTSV / Cathepsin V antibody was raised against synthetic peptide surrounding amino acid 21 of human cathepsin V.
<b>Reactivity:</b>	Human, Mouse, Rat
<b>Purification:</b>	Affinity purified
<b>Presentation:</b>	PBS, pH 7.2, 30% glycerol, 0.5% BSA, 0.01% Thimerosal.
<b>Recommended Storage:</b>	Short term +4°C (no longer than one week); Long term -20°C; Aliquot to avoid freeze/thaw cycles.
<b>Uses:</b>	IHC - Paraffin (5 µg/ml), Western blot (0.5 - 4 µg/ml) (Optimal dilution to be determined by the researcher)
<b>Size:</b>	50 µg
<b>Concentration:</b>	0.5 mg/ml

**Immunohistochemistry Image:**



Human Kidney: Formalin-Fixed, Paraffin-Embedded (FFPE)

**Western Blot Image:**



Western blot of CTSL2 / Cathepsin V antibody in Jurkat cell lysate (Lane 1) and mouse small intestine lysate (Lane 2).

**Requested From:**

Japan

Laboratory Reagent For In Vitro Research Use Only

Not for resale without prior written consent from LifeSpan BioSciences, Inc.

Created on 9/24/2014

© 2014 LifeSpan BioSciences