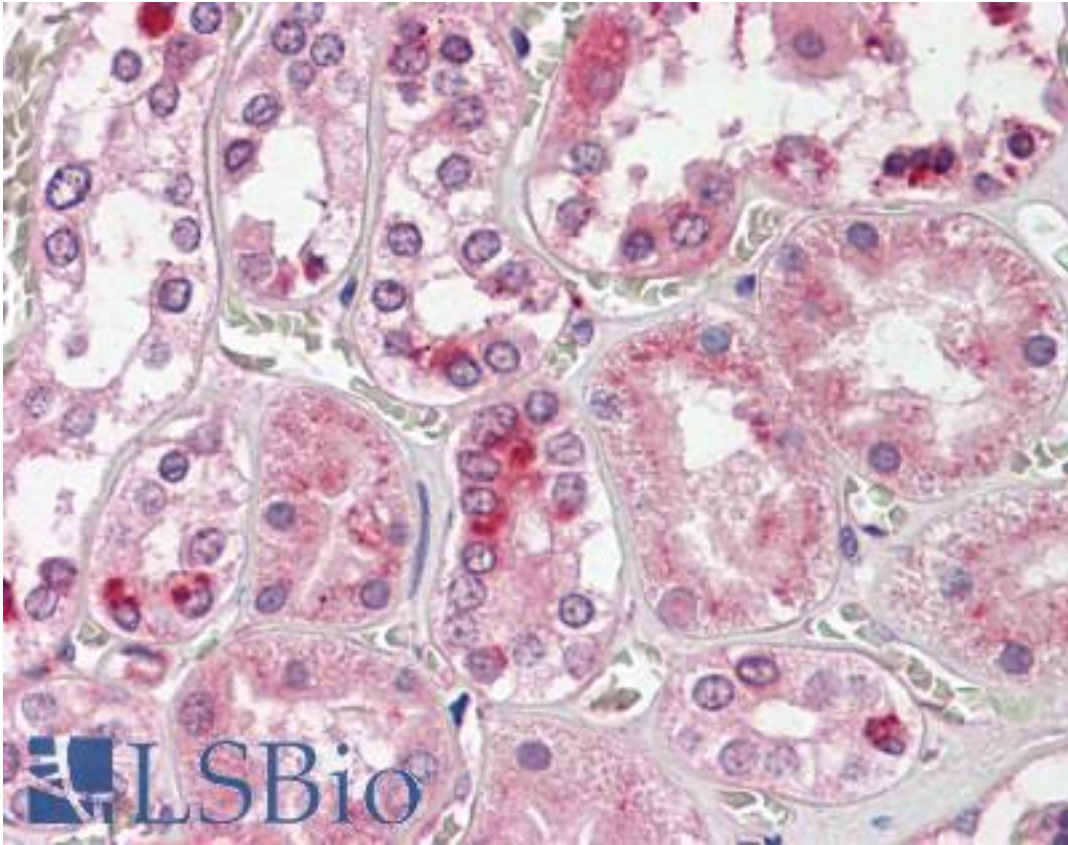


BMF Rabbit anti-Human Polyclonal Antibody - LS-B8732 - LSBio

CatalogID:	LS-B8732
Validation:	This antibody replaces catalog number LS-C146900. It has been validated for use in the following assays: IHC-P.
Target:	Bcl2 modifying factor (BMF)
Synonyms:	BMF Antibody, Bcl2 modifying factor Antibody, Bcl-2-modifying factor Antibody
Family / Subfamily:	Apoptosis
Host	BMF antibody was produced in Rabbit
Clonality:	Polyclonal
Isotype:	IgG
Immunogen Species:	BMF antibody was raised against Human
Antigen Type:	Synthetic peptide
Immunogen:	BMF antibody was raised against synthetic peptide surrounding amino acid 9 of human BMF
Specificity:	Human BMF
Reactivity:	Human, Mouse, Rat
Purification:	Affinity purified
Presentation:	PBS, 30% glycerol, 0.5% BSA, 0.01% Thimerosal
Recommended Storage:	Long term: -20°C; Short term: +4°C. Avoid repeat freeze-thaw cycles.
Uses:	IHC - Paraffin (5 µg/ml), Western blot (0.5 - 4 µg/ml) (Optimal dilution to be determined by the researcher)
Size:	50 µg
Concentration:	0.5 mg/ml

Immunohistochemistry Image:



Human Kidney: Formalin-Fixed, Paraffin-Embedded (FFPE)

Requested From:

Japan

Laboratory Reagent For In Vitro Research Use Only

Not for resale without prior written consent from LifeSpan BioSciences, Inc.

Created on 9/24/2014

© 2014 LifeSpan BioSciences