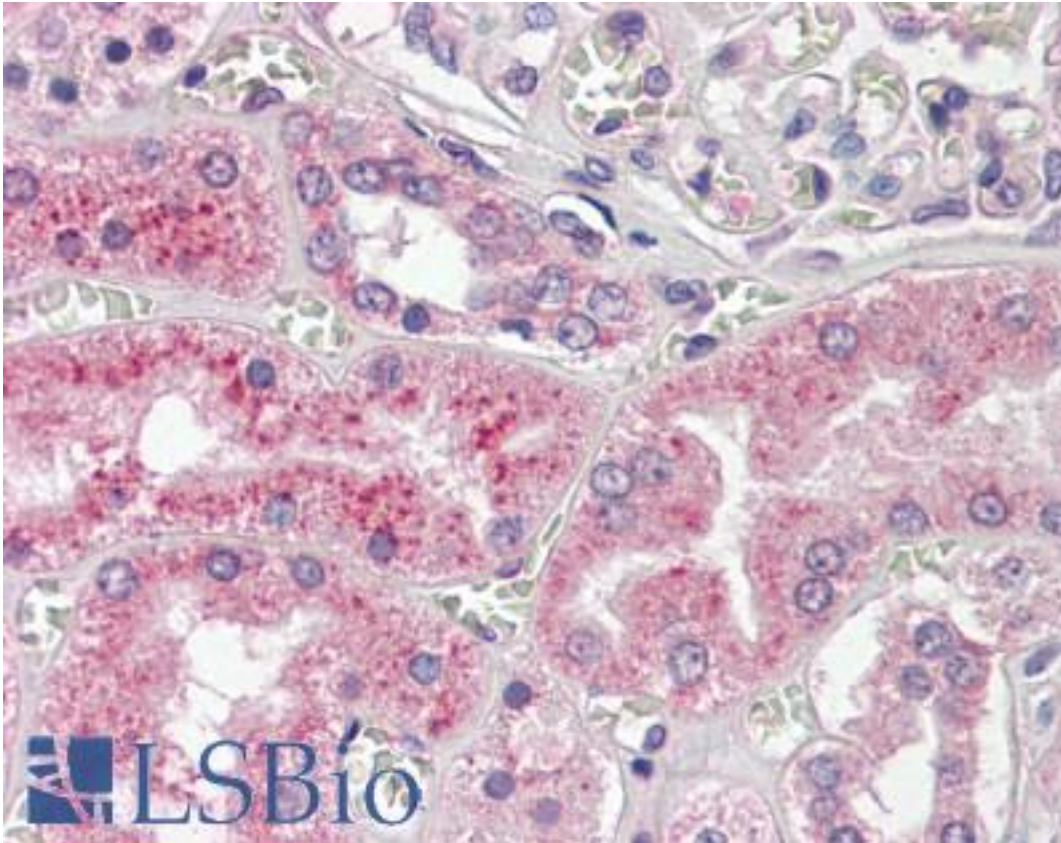


**CTSL / Cathepsin L Rabbit anti-Human Polyclonal Antibody - LS-B8730 - LSBio**

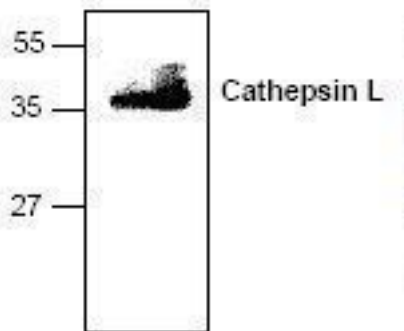
<b>CatalogID:</b>	LS-B8730
<b>Validation:</b>	This antibody replaces catalog number LS-C48238. It has been validated for use in the following assays: IHC-P.
<b>Target:</b>	cathepsin L (CTSL)
<b>Synonyms:</b>	CTSL Antibody, Cathepsin L Antibody, Cathepsin L1 Antibody, CATL Antibody, CTSL1 Antibody, Major excreted protein Antibody, MEP Antibody
<b>Family / Subfamily:</b>	Protease / Cysteine C1
<b>Host</b>	CTSL antibody was produced in Rabbit
<b>Clonality:</b>	Polyclonal
<b>Isotype:</b>	IgG
<b>Immunogen Species:</b>	CTSL / Cathepsin L antibody was raised against Human
<b>Antigen Type:</b>	Synthetic peptide
<b>Immunogen:</b>	CTSL / Cathepsin L antibody was raised against synthetic peptide surrounding amino acid 223 of human Cathepsin L.
<b>Specificity:</b>	Detects both the proenzyme and the mature form of cathepsin L
<b>Reactivity:</b>	Human, Mouse, Rat
<b>Purification:</b>	Affinity purified
<b>Presentation:</b>	PBS, pH 7.2, 30% glycerol, 0.1% BSA, 0.01% Thimerosal.
<b>Recommended Storage:</b>	Long term: -70°C; Short term: -20°C
<b>Uses:</b>	IHC - Paraffin (5 µg/ml), Western blot (0.5 - 4 µg/ml) (Optimal dilution to be determined by the researcher)
<b>Size:</b>	50 µg
<b>Concentration:</b>	0.2 mg/ml

**Immunohistochemistry Image:**



Human Kidney: Formalin-Fixed, Paraffin-Embedded (FFPE)

**Western Blot Image:**



Western blot of Cathepsin L antibody LS-B8730.

**Requested From:**

Japan

Laboratory Reagent For In Vitro Research Use Only

Not for resale without prior written consent from LifeSpan BioSciences, Inc.

Created on 9/24/2014

© 2014 LifeSpan BioSciences