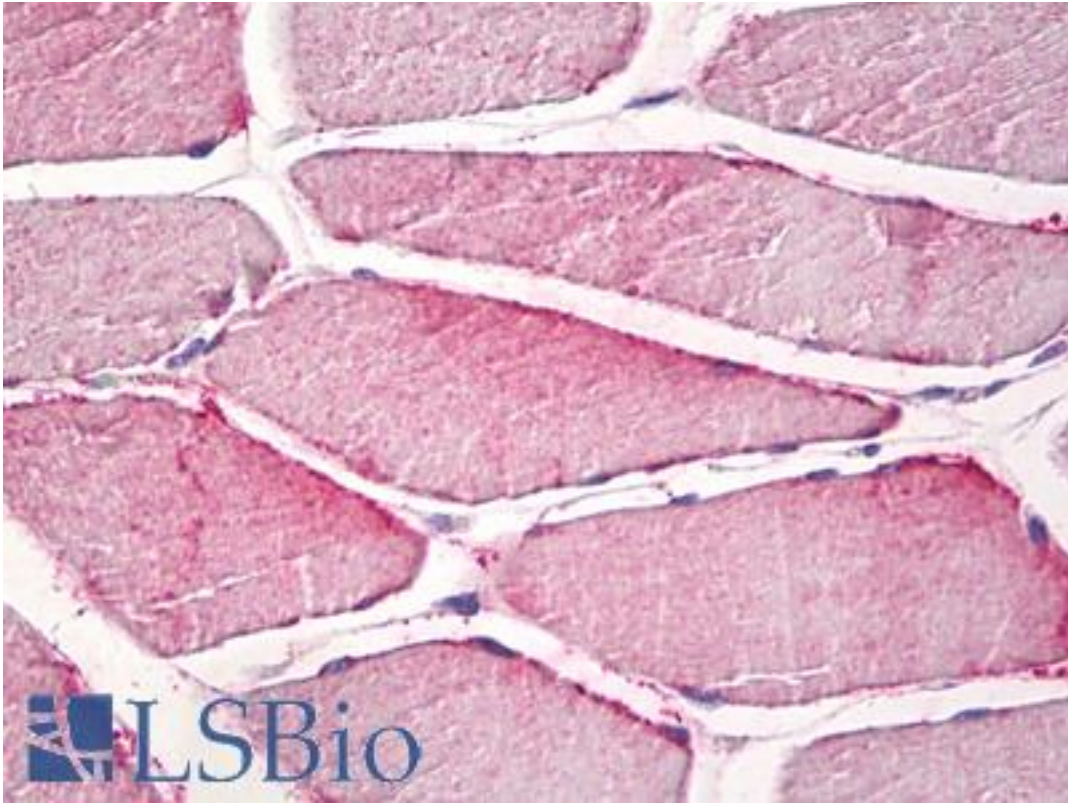


CPNE6 / N-COPINE Mouse anti-Human Monoclonal (6.4_1B4) Antibody - LS-B8723 - LSBio	
<b>CatalogID:</b>	LS-B8723
<b>Validation:</b>	This antibody replaces catalog number LS-C155782. It has been validated for use in the following assays: IHC-P.
<b>Target:</b>	copine VI (neuronal) (CPNE6)
<b>Synonyms:</b>	CPNE6 Antibody, Copine VI Antibody, Copine VI (neuronal) Antibody, Copine-6 Antibody, Neuronal-copine Antibody, N-COPINE Antibody, Neuronal copine Antibody
<b>Host</b>	CPNE6 antibody was produced in Mouse
<b>Clonality:</b>	Monoclonal
<b>Isotype:</b>	IgG2a
<b>Clone Name:</b>	6.4_1B4
<b>Immunogen Species:</b>	CPNE6 / N-COPINE antibody was raised against Human
<b>Antigen Type:</b>	Cells
<b>Immunogen:</b>	CPNE6 / N-COPINE antibody was raised against heLa cells
<b>Specificity:</b>	Human CPNE6 / N-COPINE
<b>Reactivity:</b>	Human
<b>Purification:</b>	Protein A/G purified
<b>Presentation:</b>	PBS, 0.02% sodium azide
<b>Recommended Storage:</b>	Long term: -20°C; Short term: +4°C. Avoid repeat freeze-thaw cycles.
<b>Uses:</b>	IHC - Paraffin (10 µg/ml), ICC (10 µg/ml), Western blot (1 µg/ml), Immunoprecipitation (Optimal dilution to be determined by the researcher)
<b>Size:</b>	50 µg

**Immunohistochemistry Image:**



Human Skeletal Muscle: Formalin-Fixed, Paraffin-Embedded (FFPE)

**Requested From:**

Japan

Laboratory Reagent For In Vitro Research Use Only

Not for resale without prior written consent from LifeSpan BioSciences, Inc.

Created on 9/24/2014

© 2014 LifeSpan BioSciences