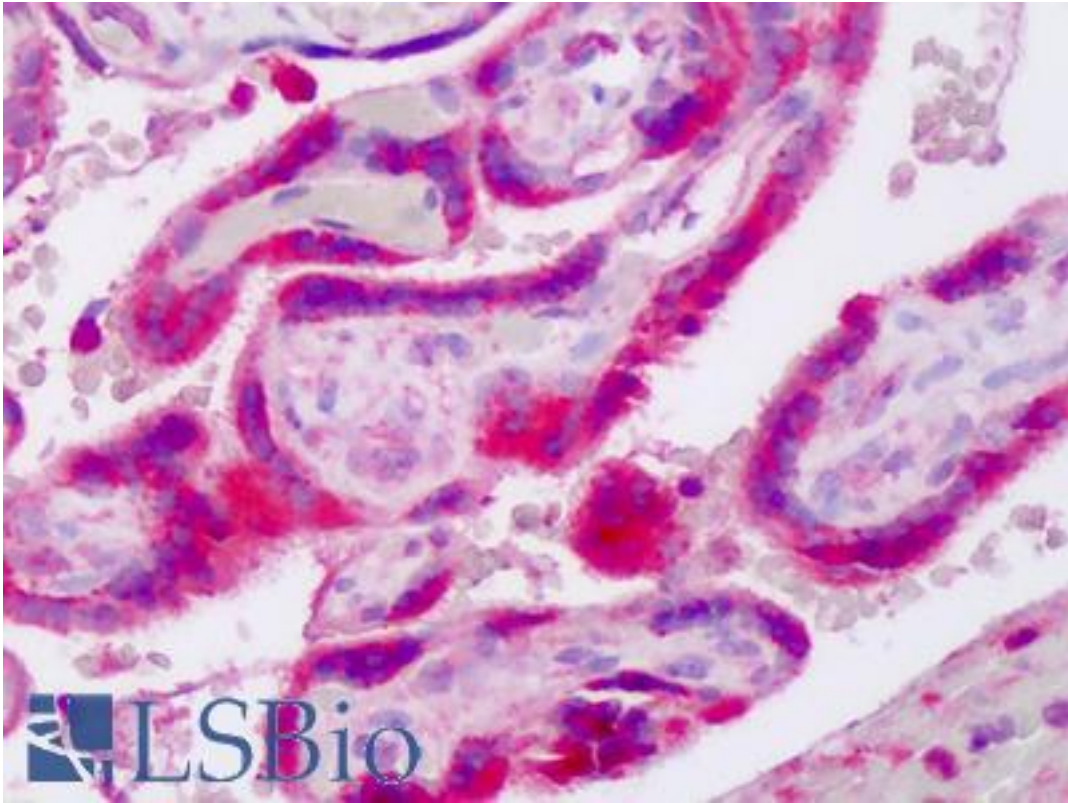


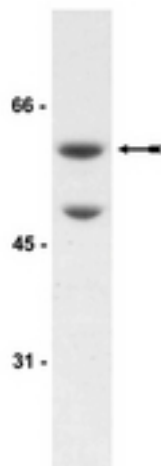
AKT3 Rabbit anti-Human Polyclonal (aa119-131) Antibody - LS-B8718 - LSBio	
<b>CatalogID:</b>	LS-B8718
<b>Validation:</b>	This antibody replaces catalog number LS-C152748. It has been validated for use in the following assays: IHC-P.
<b>Target:</b>	v-akt murine thymoma viral oncogene homolog 3 (AKT3)
<b>Synonyms:</b>	AKT3 Antibody, AKT3/PKBgamma Antibody, PRKBG Antibody, PKB gamma Antibody, Protein kinase Akt-3 Antibody, RAC-gamma Antibody, MPPH Antibody, PKB-GAMMA Antibody, PKBG Antibody, Protein kinase B gamma Antibody, RAC-PK-gamma Antibody, STK-2 Antibody
<b>Family / Subfamily:</b>	Protein Kinase / RAC/AKT
<b>Host</b>	AKT3 antibody was produced in Rabbit
<b>Clonality:</b>	Polyclonal
<b>Isotype:</b>	IgG
<b>Immunogen Species:</b>	AKT3 antibody was raised against Human
<b>Antigen Type:</b>	Synthetic peptide
<b>Immunogen:</b>	AKT3 antibody was raised against peptide corresponding to amino acids 119-131 of human Akt3/PKBgamma
<b>Specificity:</b>	Recognizes Akt3/PKB
<b>Epitope:</b>	aa119-131
<b>Reactivity:</b>	Human
<b>Purification:</b>	Immunoaffinity purified
<b>Presentation:</b>	30% glycerol, 0.07 M Tris-glycine, pH 7.4, 0.105 M sodium chloride, 0.035% sodium azide
<b>Recommended Storage:</b>	Store at -20°C. Aliquot to avoid freeze/thaw cycles. Store undiluted.
<b>Uses:</b>	IHC - Paraffin (1:100), Western blot, Immunoprecipitation (Optimal dilution to be determined by the researcher)
<b>Size:</b>	50 µl

**Immunohistochemistry Image:**



Human Placenta: Formalin-Fixed, Paraffin-Embedded (FFPE)

**Western Blot Image:**



WB: HEK293 cell lysate was probed with Anti-Akt3 antibody.

**Requested From:**

Japan

Laboratory Reagent For In Vitro Research Use Only

Not for resale without prior written consent from LifeSpan BioSciences, Inc.

Created on 9/24/2014

© 2014 LifeSpan BioSciences