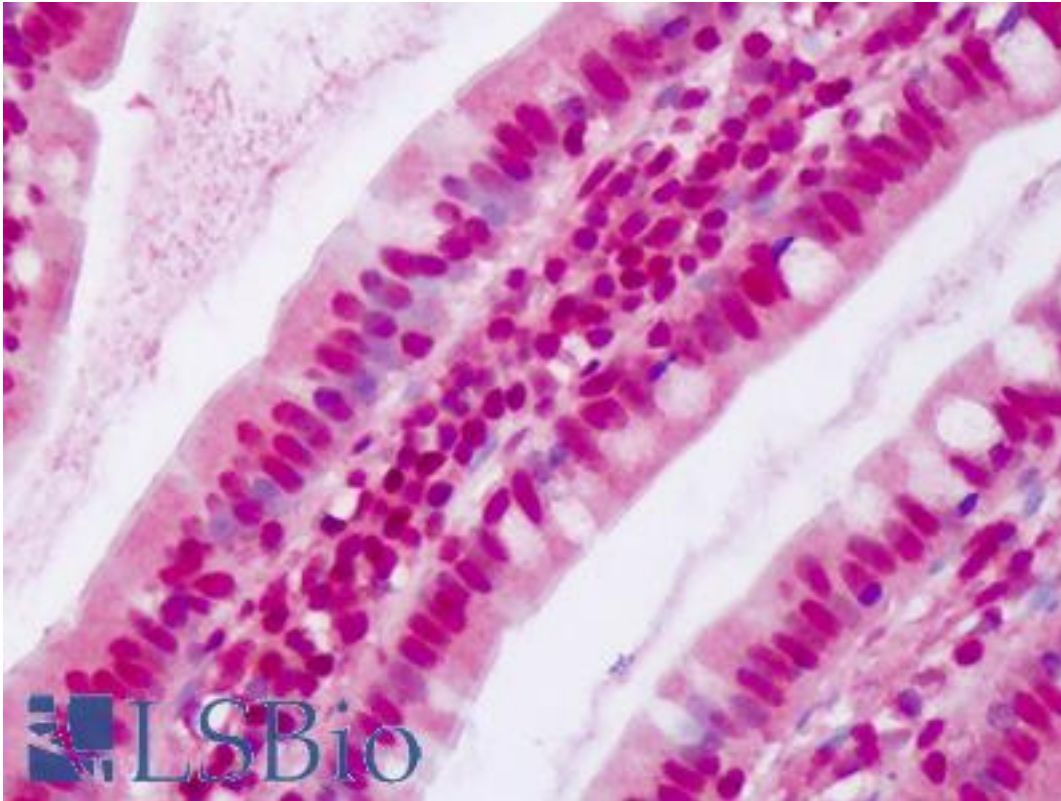


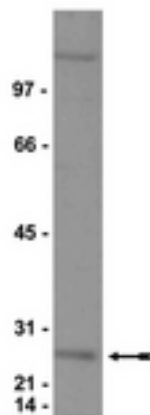
CBX3 / HP1 Gamma Rabbit anti-Mouse Polyclonal (aa2-15) Antibody - LS-B8717 - LSBio	
<b>CatalogID:</b>	LS-B8717
<b>Validation:</b>	This antibody replaces catalog number LS-C152746. It has been validated for use in the following assays: IHC-P.
<b>Target:</b>	chromobox homolog 3 (CBX3)
<b>Synonyms:</b>	CBX3 Antibody, Chromobox homolog 3 Antibody, HP1Hs-gamma Antibody, Heterochromatin-like protein 1 Antibody, Modifier 2 protein Antibody, HP1-GAMMA Antibody, Chromobox protein homolog 3 Antibody, HECH Antibody, HP1 gamma Antibody, HP1 gamma homolog Antibody
<b>Host</b>	CBX3 antibody was produced in Rabbit
<b>Clonality:</b>	Polyclonal
<b>Isotype:</b>	IgG
<b>Immunogen Species:</b>	CBX3 / HP1 Gamma antibody was raised against Mouse
<b>Immunogen:</b>	CBX3 / HP1 Gamma antibody was raised against peptide corresponding to amino acids 2-15 (ASNKTTLQKMGKKQ) of mouse HP1 gamma protein Percent identity by BLAST analysis: Human, Chimpanzee, Gorilla, Orangutan, Gibbon, Monkey, Marmoset, Mouse, Rat, Panda, Dog, Bovine, Bat, Horse, Pig, Opossum, Guinea pig (100%); Turkey, Zebra finch, Chicken, Platypus (93%).
<b>Specificity:</b>	HP1
<b>Epitope:</b>	aa2-15
<b>Reactivity:</b>	Mouse, Human, Chimpanzee, Gorilla, Orangutan, Gibbon, Monkey, Rat, Bat, Bovine, Dog, Guinea pig, Horse, Pig
<b>Predicted Reactivity:</b>	Chicken
<b>Purification:</b>	Protein A purified
<b>Presentation:</b>	0.1 M Tris-glycine, pH 7.4, 0.15 M sodium chloride, 0.05% sodium azide, 30% glycerol
<b>Recommended Storage:</b>	Short term 4°C, long term aliquot and store at -20°C, avoid freeze thaw cycles.
<b>Uses:</b>	IHC - Paraffin (5 µg/ml), Western blot (Optimal dilution to be determined by the researcher)
<b>Size:</b>	50 µg

**Immunohistochemistry Image:**



Human Small Intestine: Formalin-Fixed, Paraffin-Embedded (FFPE)

**Western Blot Image:**



WB: HeLa nuclear extract was probed with Anti-HP1 Gamma.

**Requested From:**

Japan

Laboratory Reagent For In Vitro Research Use Only

Not for resale without prior written consent from LifeSpan BioSciences, Inc.

Created on 9/24/2014

© 2014 LifeSpan BioSciences