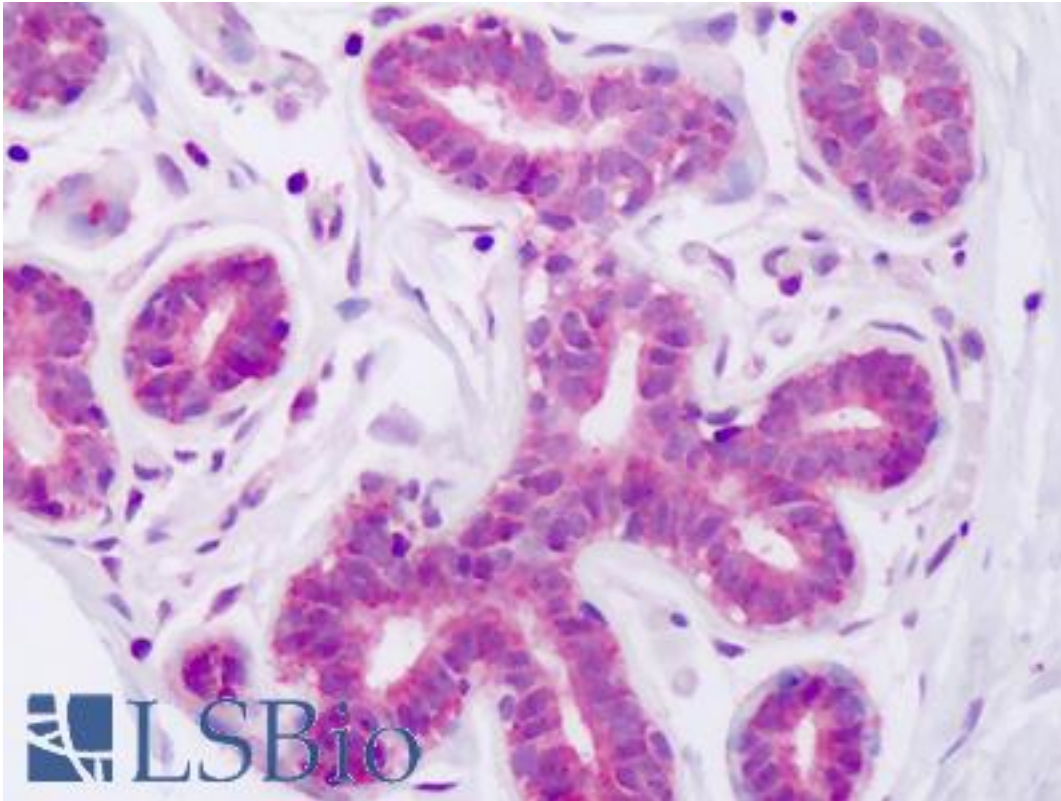


**NOTCH1 Rabbit anti-Rat Polyclonal (aa2272-2488) Antibody - LS-B8716 - LSBio**

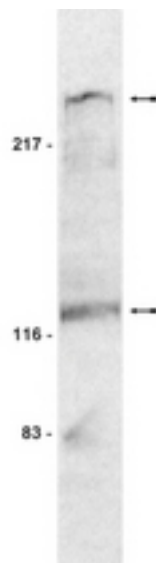
<b>CatalogID:</b>	LS-B8716
<b>Validation:</b>	This antibody replaces catalog number LS-C152743. It has been validated for use in the following assays: IHC-P.
<b>Target:</b>	notch 1 (NOTCH1)
<b>Synonyms:</b>	NOTCH1 Antibody, Notch 1 Antibody, TAN1 Antibody
<b>Host</b>	NOTCH1 antibody was produced in Rabbit
<b>Clonality:</b>	Polyclonal
<b>Isotype:</b>	IgG
<b>Immunogen Species:</b>	NOTCH1 antibody was raised against Rat
<b>Antigen Type:</b>	Fusion protein
<b>Immunogen:</b>	NOTCH1 antibody was raised against gST fusion protein corresponding to residues 2272-2488 of rat Notch1
<b>Specificity:</b>	Notch1
<b>Epitope:</b>	aa2272-2488
<b>Reactivity:</b>	Rat, Human
<b>Purification:</b>	Protein A purified
<b>Presentation:</b>	0.1 M Tris-glycine, pH 7.4, 0.15 M sodium chloride, 0.05% sodium azide, 30% glycerol
<b>Recommended Storage:</b>	Short term 4°C, long term aliquot and store at -20°C, avoid freeze thaw cycles.
<b>Uses:</b>	IHC - Paraffin (10 µg/ml), Western blot (Optimal dilution to be determined by the researcher)
<b>Size:</b>	50 µg

**Immunohistochemistry Image:**



Human Breast, Epithelium: Formalin-Fixed, Paraffin-Embedded (FFPE)

**Western Blot Image:**



WB: mouse L fibroblasts transfected with Notch1 probed with anti-Notch1 (4 ug/ml).

**Requested From:**

Japan

Laboratory Reagent For In Vitro Research Use Only

Not for resale without prior written consent from LifeSpan BioSciences, Inc.

Created on 9/24/2014

© 2014 LifeSpan BioSciences