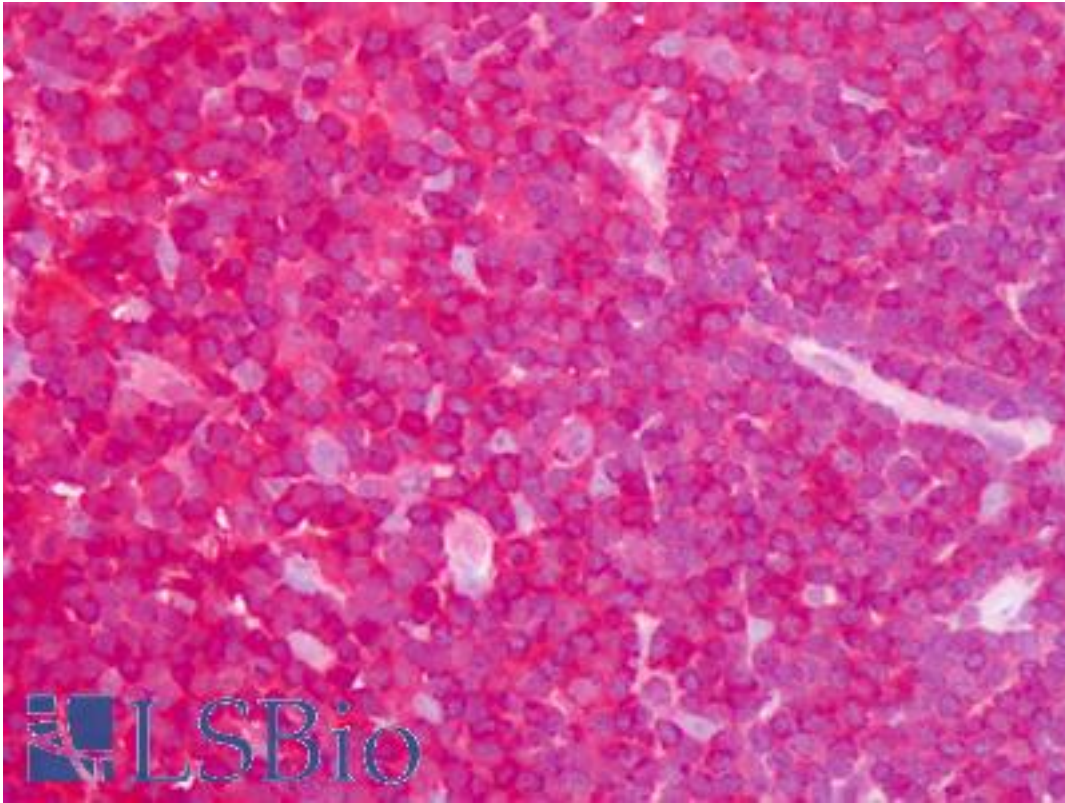


ARHGDI / RHOGDI Rabbit anti-Human Polyclonal Antibody - LS-B8714 - LSBio

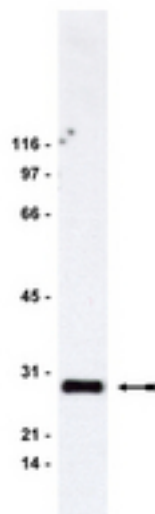
<b>CatalogID:</b>	LS-B8714
<b>Validation:</b>	This antibody replaces catalog number LS-C152728. It has been validated for use in the following assays: IHC-P.
<b>Target:</b>	Rho GDP dissociation inhibitor (GDI) alpha (ARHGDI)
<b>Synonyms:</b>	ARHGDI Antibody, GDIA1 Antibody, Rho GDI 1 Antibody, Rho-GDI alpha Antibody, RHOGDI-1 Antibody, RHOGDI Antibody
<b>Host</b>	ARHGDI antibody was produced in Rabbit
<b>Clonality:</b>	Polyclonal
<b>Isotype:</b>	IgG
<b>Immunogen Species:</b>	ARHGDI / RHOGDI antibody was raised against Human
<b>Antigen Type:</b>	Fusion protein
<b>Immunogen:</b>	ARHGDI / RHOGDI antibody was raised against gST fusion protein corresponding to full length Human Rho-GDI
<b>Specificity:</b>	Recognizes Rho-GDI; cross-reacts with D4-GDI
<b>Reactivity:</b>	Human, Mouse, Bovine
<b>Purification:</b>	Protein A purified
<b>Presentation:</b>	30% glycerol, 0.07 M Tris-glycine, pH 7.4, 0.105 M sodium chloride, 0.035% sodium azide
<b>Recommended Storage:</b>	Store at -20°C. Aliquot to avoid freeze/thaw cycles. Store undiluted.
<b>Uses:</b>	IHC - Paraffin (5 µg/ml), Western blot, Immunoprecipitation (Optimal dilution to be determined by the researcher)
<b>Size:</b>	50 µg
<b>Concentration:</b>	1 mg/ml

**Immunohistochemistry Image:**



Human Small Intestine, Lymphocytes in Peyer's Patch: Formalin-Fixed, Paraffin-Embedded (FFPE)

**Western Blot Image:**



WB: NIH 3T3 cell lysate probed with anti-Rho-GDI at 0.5 ug/ml.

**Requested From:**

Japan

Laboratory Reagent For In Vitro Research Use Only

Not for resale without prior written consent from LifeSpan BioSciences, Inc.

Created on 9/24/2014

© 2014 LifeSpan BioSciences