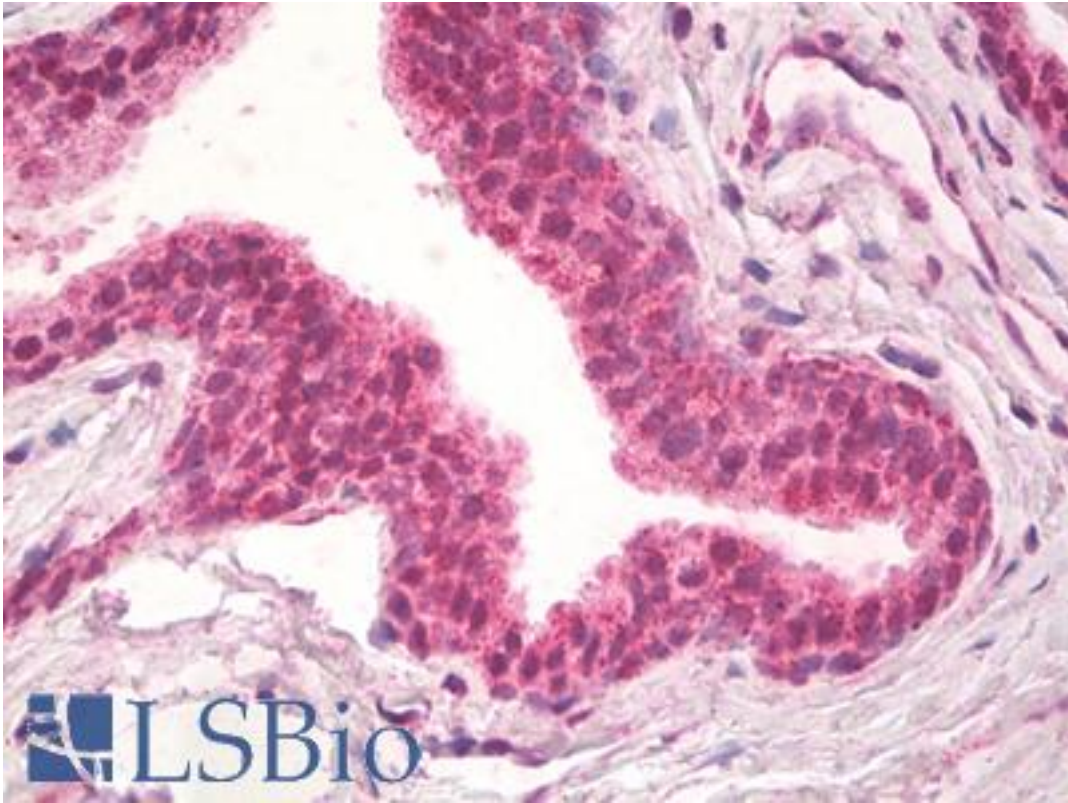


NPR3 Goat anti-Human Polyclonal (aa520-533) Antibody - LS-B8684 - LSBio	
CatalogID:	LS-B8684
Validation:	This antibody replaces catalog number LS-C154924. It has been validated for use in the following assays: IHC-P.
Target:	natriuretic peptide receptor C/guanylate cyclase C (atrionatriuretic peptide receptor C) (NPR3)
Synonyms:	NPR3 Antibody, ANPRC Antibody, C5orf23 Antibody, GUCY2B Antibody, NPR-C Antibody, NPRC Antibody, ANP-C Antibody, ANPR-C Antibody
Host	NPR3 antibody was produced in Goat
Clonality:	Polyclonal
Immunogen Species:	NPR3 antibody was raised against Human
Antigen Type:	Synthetic peptide
Immunogen:	NPR3 antibody was raised against synthetic peptide C-HRELREDSIRSHFS from the C-terminus of human NPR3 (NP_000899.1). Percent identity by BLAST analysis: Human, Chimpanzee, Gorilla, Orangutan, Gibbon, Monkey, Galago, Marmoset, Mouse, Rat, Hamster, Elephant, Dog, Bovine, Horse, Rabbit, Porcine, Opossum (100%); Bat, Turkey, Zebra finch, Chicken, Xenopus (93%); Pufferfish, Zebrafish (86%).
Specificity:	Human NPR3. The immunizing peptide represents the cytoplasmic part of the protein.
Epitope:	aa520-533
Reactivity:	Human, Chimpanzee, Gorilla, Orangutan, Gibbon, Monkey, Mouse, Rat, Bovine, Dog, Hamster, Horse, Rabbit
Predicted Reactivity:	Bat, Chicken, Xenopus
Purification:	Immunoaffinity purified
Presentation:	Tris-buffered saline, pH 7.3, 0.5% BSA, 0.02% sodium azide
Recommended Storage:	Short term 4°C, long term aliquot and store at -20°C, avoid freeze thaw cycles.
Usage Summary:	Peptide ELISA: antibody detection limit dilution 1:16000. Western blot: Approx 52kD band observed in Human Placenta lysates (calculated MW of 59.8kD according to NP_000899.1). Recommended concentration: 1-3 ug/ml. Tested in IHC-P only with human FFPE samples.
Uses:	IHC - Paraffin (10 µg/ml), Western blot (1 - 3 µg/ml), ELISA (1:16000) (Optimal dilution to be determined by the researcher)
Size:	50 µg
Concentration:	0.5 mg/ml

Immunohistochemistry Image:



Human Prostate: Formalin-Fixed, Paraffin-Embedded (FFPE)

Western Blot Image:



NPR3 antibody (1 ug/ml) staining of Human Placenta lysate (35 ug protein in RIPA buffer).
Primary incubation was 1 hour. Detected by chemiluminescence.

Requested From:

Japan

Laboratory Reagent For In Vitro Research Use Only

Not for resale without prior written consent from LifeSpan BioSciences, Inc.

Created on 9/24/2014

© 2014 LifeSpan BioSciences