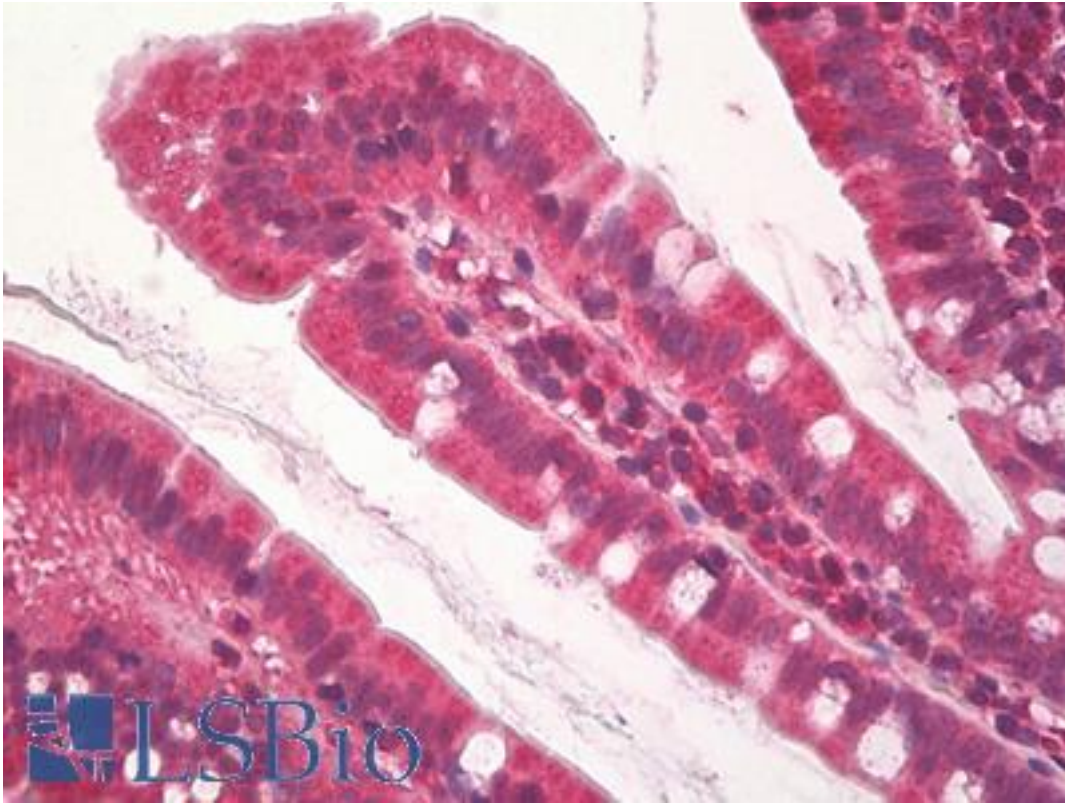


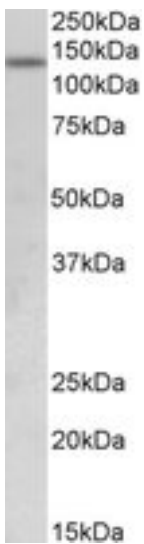
JHDM1A / KDM2A Goat anti-Human Polyclonal (Internal) Antibody - LS-B8683 - LSBio	
CatalogID:	LS-B8683
Validation:	This antibody replaces catalog number LS-C139780. It has been validated for use in the following assays: IHC-P.
Target:	lysine (K)-specific demethylase 2A (KDM2A)
Synonyms:	KDM2A Antibody, CXXC8 Antibody, FBL11 Antibody, DKFZP434M1735 Antibody, JHDM1A Antibody, F-box protein Fbl7 Antibody, F-box/LRR-repeat protein 11 Antibody, KIAA1004 Antibody, FBXL11 Antibody, Lysine-specific demethylase 2A Antibody, LILINA Antibody, SF-KDM2A Antibody, F-box protein Lilina Antibody, FBL7 Antibody
Host	KDM2A antibody was produced in Goat
Clonality:	Polyclonal
Immunogen Species:	JHDM1A / KDM2A antibody was raised against Human
Antigen Type:	Synthetic peptide
Immunogen:	JHDM1A / KDM2A antibody was raised against synthetic peptide C-PRKDRQVHLTHFELE from an internal region of human KDM2A / FBXL11 (NP_036440.1). Percent identity by BLAST analysis: Human, Gibbon, Monkey, Marmoset, Rat, Hamster, Elephant, Dog, Bat, Horse, Rabbit, Pig (100%); Mouse, Panda, Platypus (93%); Turkey (80%).
Specificity:	Human KDM2A / FBXL11.
Epitope:	Internal
Reactivity:	Human, Gibbon, Monkey, Rat, Bat, Dog, Hamster, Horse, Pig, Rabbit
Predicted Reactivity:	Mouse
Purification:	Immunoaffinity purified
Presentation:	Tris-buffered saline, pH 7.3, 0.5% BSA, 0.02% sodium azide
Recommended Storage:	Short term 4°C, long term aliquot and store at -20°C, avoid freeze thaw cycles.
Usage Summary:	Peptide ELISA: antibody detection limit dilution 1:32000. Western blot: Approx 140kD band observed in Human Uterus lysates (calculated MW of 133kD according to NP_036440.1). Recommended concentration: 0.5-2 ug/ml.
Uses:	IHC - Paraffin (5 µg/ml), Western blot (0.5 - 2 µg/ml), ELISA (1:32000) (Optimal dilution to be determined by the researcher)
Size:	50 µg
Concentration:	0.5 mg/ml

Immunohistochemistry Image:



Human Small Intestine: Formalin-Fixed, Paraffin-Embedded (FFPE)

Western Blot Image:



KDM2A antibody (0.5 ug/ml) staining of Human Uterus lysate (35 ug protein/ml in RIPA buffer). Primary incubation was 1 hour. Detected by chemiluminescence.

Requested From:

Japan

Laboratory Reagent For In Vitro Research Use Only

Not for resale without prior written consent from LifeSpan BioSciences, Inc.

Created on 9/24/2014

© 2014 LifeSpan BioSciences