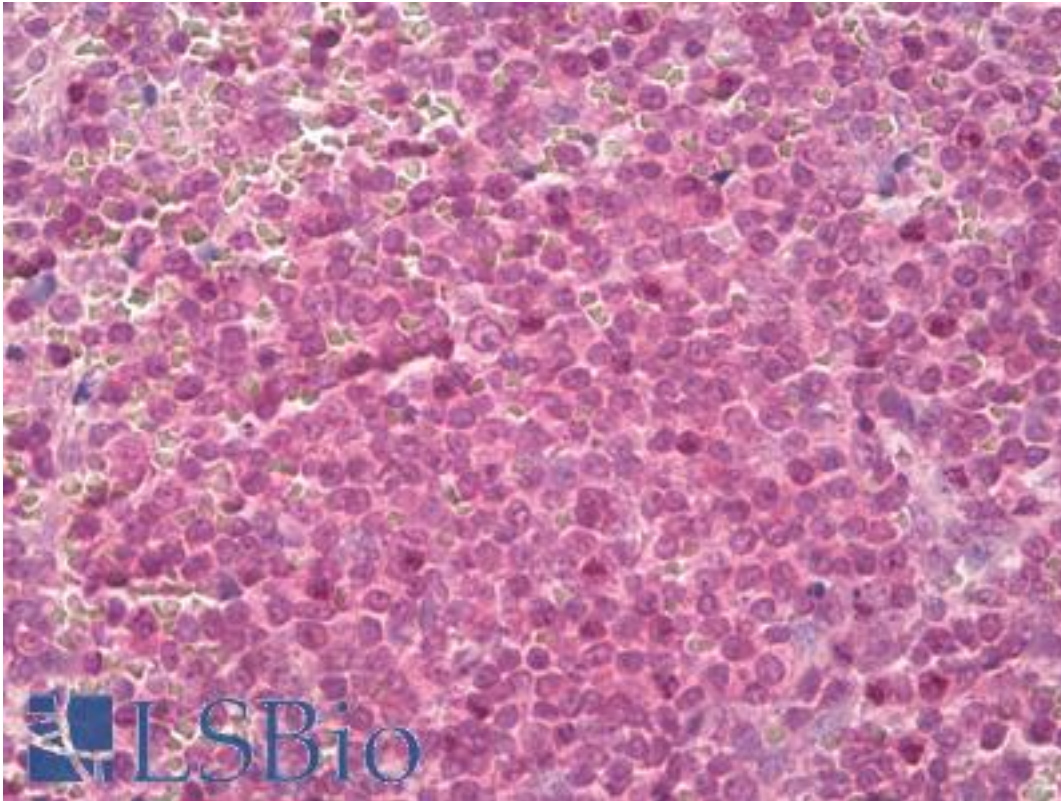


YWHAZ / 14-3-3 Zeta Rabbit anti-Human Polyclonal (aa200-245) Antibody - LS-B8679 - LSBio

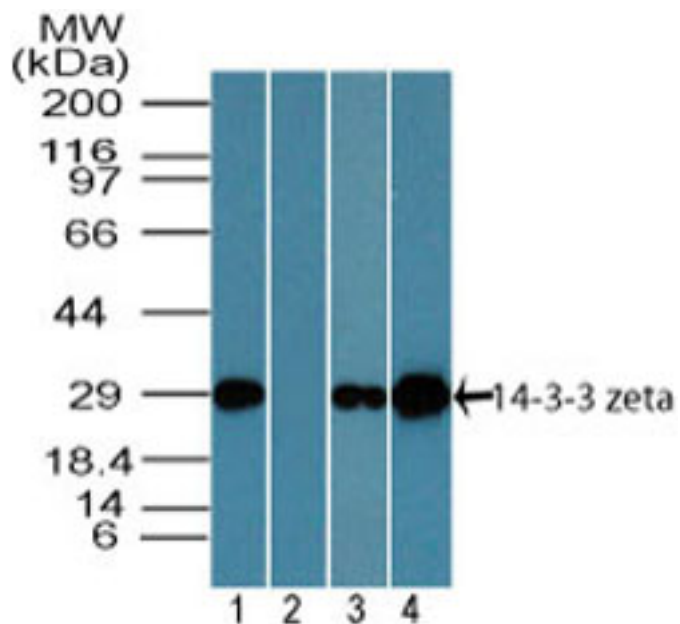
CatalogID:	LS-B8679
Validation:	This antibody replaces catalog number LS-C148661. It has been validated for use in the following assays: IHC-P.
Target:	tyrosine 3-monooxygenase/tryptophan 5-monooxygenase activation protein, zeta (YWHAZ)
Synonyms:	YWHAZ Antibody, 14-3-3 protein zeta/delta Antibody, 14-3-3-zeta Antibody, 14-3-3 delta Antibody, 14-3-3 protein zeta Antibody, 14-3-3 zeta Antibody, Phospholipase A2 Antibody, YWHAD Antibody, KCIP-1 Antibody
Family / Subfamily:	Phospholipase / not assigned-Phospholipase
Host	YWHAZ antibody was produced in Rabbit
Clonality:	Polyclonal
Immunogen Species:	YWHAZ / 14-3-3 Zeta antibody was raised against Human
Antigen Type:	Synthetic peptide
Immunogen:	YWHAZ / 14-3-3 Zeta antibody was raised against a portion of amino acids 200-245 of human 14-3-3 zeta was used as the immunogen.
Specificity:	Human YWHAZ / Phospholipase A2
Epitope:	aa200-245
Reactivity:	Human, Chimpanzee, Monkey, Mouse, Rat, Bovine, Dog
Purification:	Protein A purified
Presentation:	PBS, 0.05% BSA, 0.05% sodium azide
Recommended Storage:	Store at 4°C for short term applications. For long term storage, aliquot and store at -20°C.
Uses:	IHC - Paraffin (10 µg/ml), Western blot (1 - 3 µg/ml) (Optimal dilution to be determined by the researcher)
Size:	50 µg
Concentration:	0.5 mg/ml

Immunohistochemistry Image:



Anti-14-3-3 Zeta antibody IHC of human spleen. Immunohistochemistry of formalin-fixed, paraffin-embedded tissue after heat-induced antigen retrieval. Antibody LS-B8679 dilution 10 ug/ml.

Western Blot Image:



Western blot of 14-3-3 zeta in human brain lysate in the 1) absence, 2) presence of immunizing peptide, 3) mouse brain lysate and 4) rat brain lysate in the absence of immunizing peptide using LS-B8679 at 2 ug/ml. Goat anti-rabbit Ig HRP secondary antibody, and PicoTect ECL substrate solution, were used for this test.

Requested From:	Japan
Laboratory Reagent For In Vitro Research Use Only	
Not for resale without prior written consent from LifeSpan BioSciences, Inc.	
Created on 9/24/2014	
© 2014 LifeSpan BioSciences	