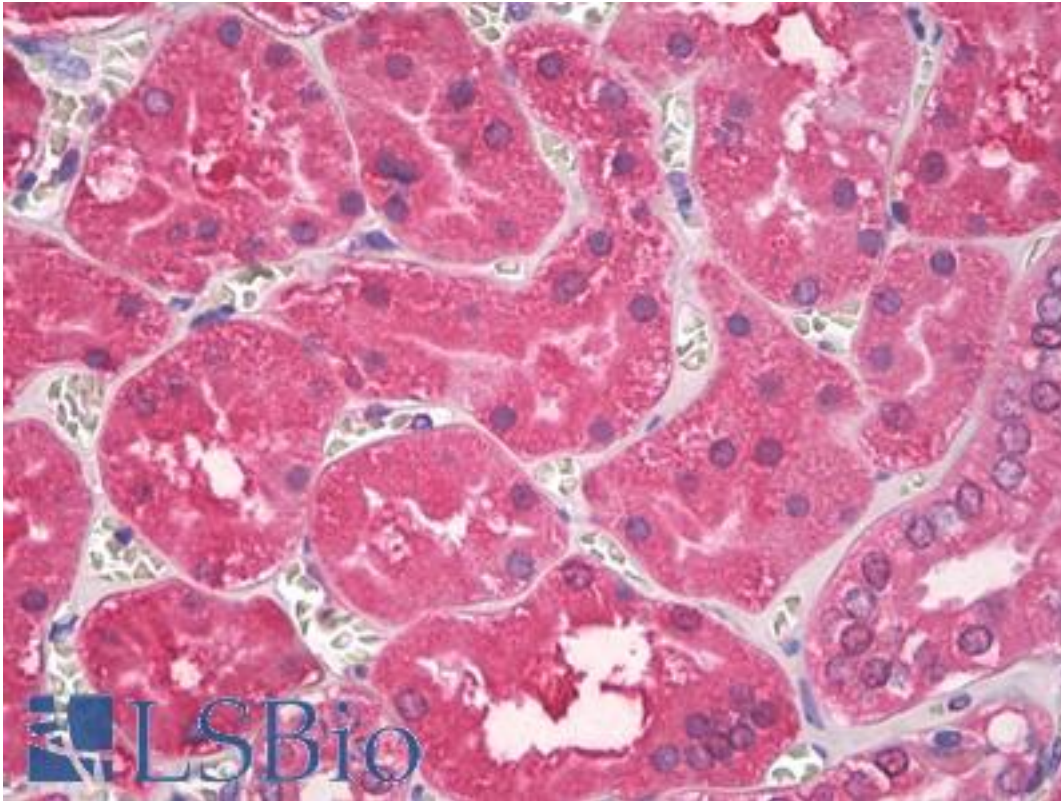


Superoxide Dismutase Rabbit anti-Bovine Polyclonal Antibody - LS-B8676 - LSBio

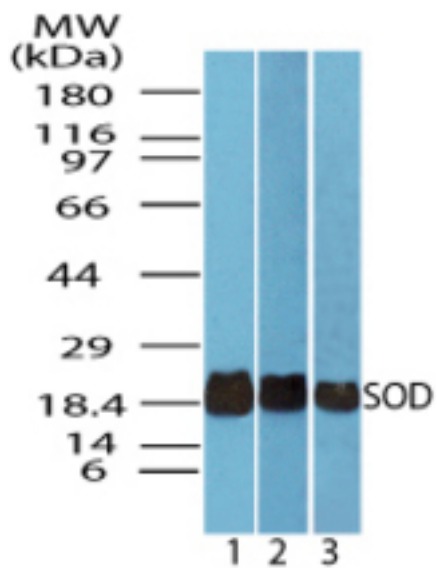
CatalogID:	LS-B8676
Validation:	This antibody replaces catalog number LS-C148442. It has been validated for use in the following assays: IHC-P.
Target:	Superoxide Dismutase
Host	Rabbit
Clonality:	Polyclonal
Immunogen Species:	Bovine
Antigen Type:	Cells
Immunogen:	The superoxide dismutase enzyme from bovine erythrocytes (CAS # 9054-89-1) was used as the immunogen.
Specificity:	Bovine Superoxide Dismutase
Reactivity:	Bovine, Human, Mouse, Rat
Purification:	Protein A purified
Presentation:	PBS, 0.05% BSA, 0.05% sodium azide
Recommended Storage:	Store at 4°C for short term applications. For long term storage, aliquot and store at -20°C.
Uses:	IHC - Paraffin (10 µg/ml), Western blot (0.03 - 0.1 µg/ml) (Optimal dilution to be determined by the researcher)
Size:	50 µg
Concentration:	0.5 mg/ml

Immunohistochemistry Image:



Anti-Superoxide Dismutase antibody IHC of human kidney, tubules. Immunohistochemistry of formalin-fixed, paraffin-embedded tissue after heat-induced antigen retrieval. Antibody LS-B8676 dilution 10 ug/ml.

Western Blot Image:



Western blot of SOD in liver lysate of 1) human, 2) mouse and 3) rat using LS-B8676 at 0.025 ug/ml.

Requested From:

Japan

Laboratory Reagent For In Vitro Research Use Only

Not for resale without prior written consent from LifeSpan BioSciences, Inc.

Created on 9/24/2014

© 2014 LifeSpan BioSciences