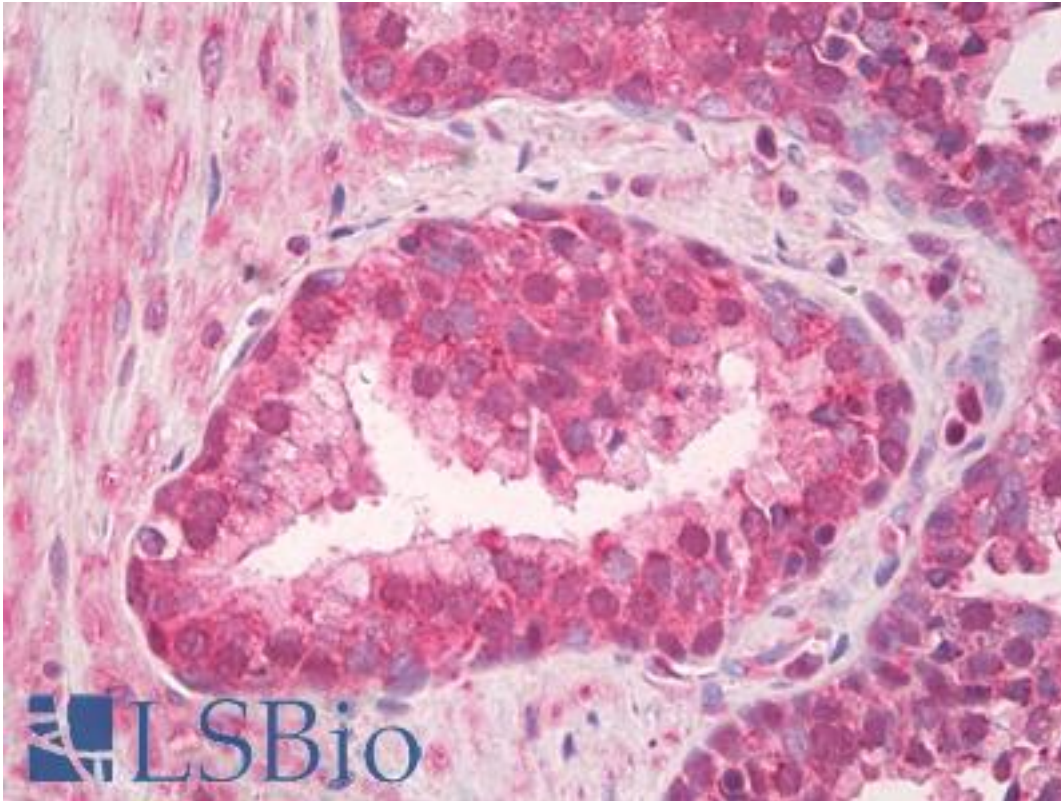


TLR4 Rabbit anti-Human Polyclonal (aa650-700) Antibody - LS-B8675 - LSBio

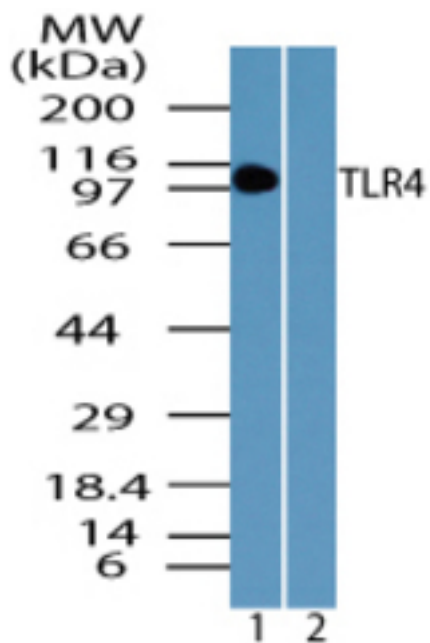
CatalogID:	LS-B8675
Validation:	This antibody replaces catalog number LS-C148505. It has been validated for use in the following assays: IHC-P.
Target:	toll-like receptor 4 (TLR4)
Synonyms:	TLR4 Antibody, CD284 Antibody, CD284 antigen Antibody, Homolog of Drosophila toll Antibody, TLR-4 Antibody, TOLL Antibody, ARMD10 Antibody, Toll-like receptor 4 Antibody, HToll Antibody
Family / Subfamily:	Toll-like Receptor / not assigned-Toll-like Receptor
Host	TLR4 antibody was produced in Rabbit
Clonality:	Polyclonal
Immunogen Species:	TLR4 antibody was raised against Human
Antigen Type:	Synthetic peptide
Immunogen:	TLR4 antibody was raised against a portion of amino acids 650-700 of human TLR4 was used as the immunogen for this antibody.
Specificity:	Human TLR4
Epitope:	aa650-700
Reactivity:	Human, Chimpanzee, Gorilla, Bovine, Horse, Macaque
Purification:	Immunoaffinity purified
Presentation:	PBS, 0.05% BSA, 0.05% sodium azide
Recommended Storage:	Store at 4°C, stable for 6 months. For long term storage, aliquot and store at -20°C.
Uses:	IHC - Paraffin (5 µg/ml), Western blot (0.1 - 0.5 µg/ml) (Optimal dilution to be determined by the researcher)
Size:	50 µg
Concentration:	0.5 mg/ml

Immunohistochemistry Image:



Anti-TLR4 antibody IHC of human prostate. Immunohistochemistry of formalin-fixed, paraffin-embedded tissue after heat-induced antigen retrieval. Antibody LS-B8675 dilution 5 ug/ml.

Western Blot Image:



Western blot of TLR4 in human intestine lysate in the 1) absence and 2) presence of immunizing peptide using TLR4 antibody at 0.1 ug/ml. Goat anti-rabbit Ig HRP secondary antibody, and PicoTect ECL substrate solution, were used for this test.

Requested From:	Japan
Laboratory Reagent For In Vitro Research Use Only	
Not for resale without prior written consent from LifeSpan BioSciences, Inc.	
Created on 9/24/2014	
© 2014 LifeSpan BioSciences	