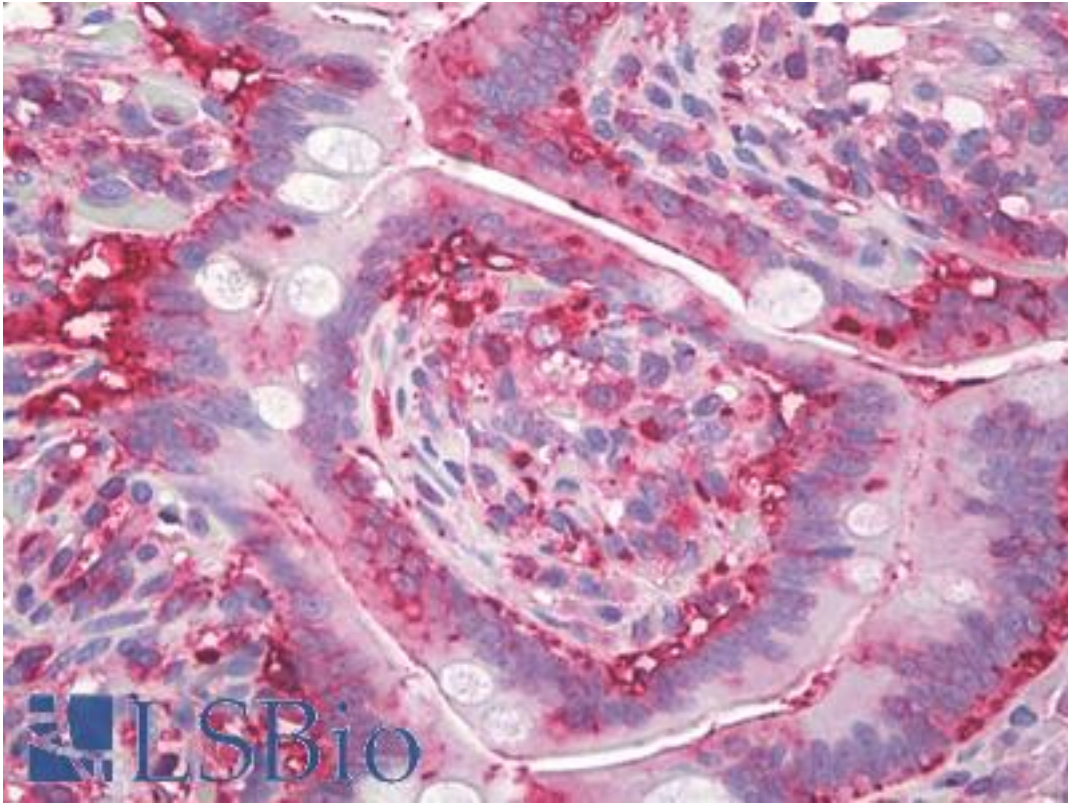


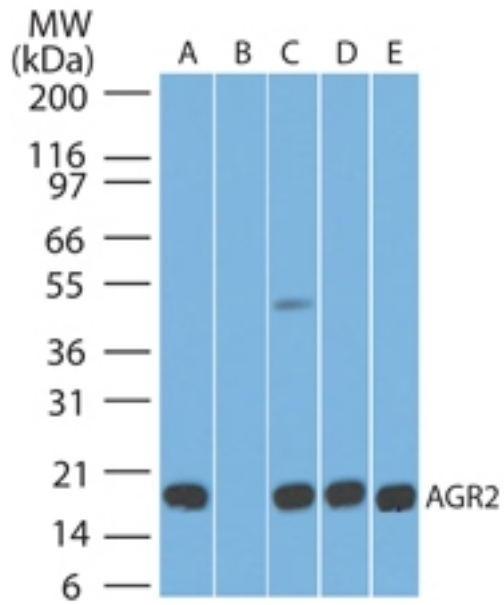
AGR2 Mouse anti-Human Monoclonal (aa50-100) (IMG10E2) Antibody - LS-B8672 - LSBio	
<b>CatalogID:</b>	LS-B8672
<b>Validation:</b>	This antibody replaces catalog number LS-C148768. It has been validated for use in the following assays: IHC-P.
<b>Target:</b>	anterior gradient 2 (AGR2)
<b>Synonyms:</b>	AGR2 Antibody, AG2 Antibody, AG-2 Antibody, HPC8 Antibody, HAG-2 Antibody, Secreted cement gland homolog Antibody, Anterior gradient homolog 2 Antibody, GOB-4 Antibody, PDIA17 Antibody, XAG-2 Antibody
<b>Host</b>	AGR2 antibody was produced in Mouse
<b>Clonality:</b>	Monoclonal
<b>Isotype:</b>	IgG1,k
<b>Clone Name:</b>	IMG10E2
<b>Immunogen Species:</b>	AGR2 antibody was raised against Human
<b>Antigen Type:</b>	Synthetic peptide
<b>Immunogen:</b>	AGR2 antibody was raised against a portion of amino acids 50-100 of human AGR2 was used as the immunogen.
<b>Specificity:</b>	Human AGR2
<b>Epitope:</b>	aa50-100
<b>Reactivity:</b>	Human, Orangutan, Mouse, Bovine, Dog, Horse
<b>Purification:</b>	Protein G purified
<b>Presentation:</b>	PBS, 0.05% BSA, 0.05% sodium azide
<b>Recommended Storage:</b>	Store at 4°C for short term applications. For long term storage, aliquot and store at -20°C.
<b>Uses:</b>	IHC - Paraffin (10 µg/ml), Western blot (4 - 6 µg/ml) (Optimal dilution to be determined by the researcher)
<b>Size:</b>	50 µg
<b>Concentration:</b>	0.5 mg/ml

**Immunohistochemistry Image:**



Anti-AGR2 antibody IHC of human small intestine. Immunohistochemistry of formalin-fixed, paraffin-embedded tissue after heat-induced antigen retrieval. Antibody LS-B8672 dilution 10 ug/ml.

**Western Blot Image:**



Western blot of AGR2 in A) human stomach tissue lysate in the absence of immunizing peptide, B) human stomach tissue lysate in the presence of immunizing peptide, C) mouse stomach tissue lysate, D) rat stomach tissue lysate, and E) HCT-116 cell lysate using LS-B8672 at 5 ug/ml. Goat anti-mouse Ig HRP secondary antibody, and PicoTect ECL substrate solution, were used for this test.

**Requested From:**

Japan

Laboratory Reagent For In Vitro Research Use Only

Not for resale without prior written consent from LifeSpan BioSciences, Inc.

Created on 9/24/2014

© 2014 LifeSpan BioSciences