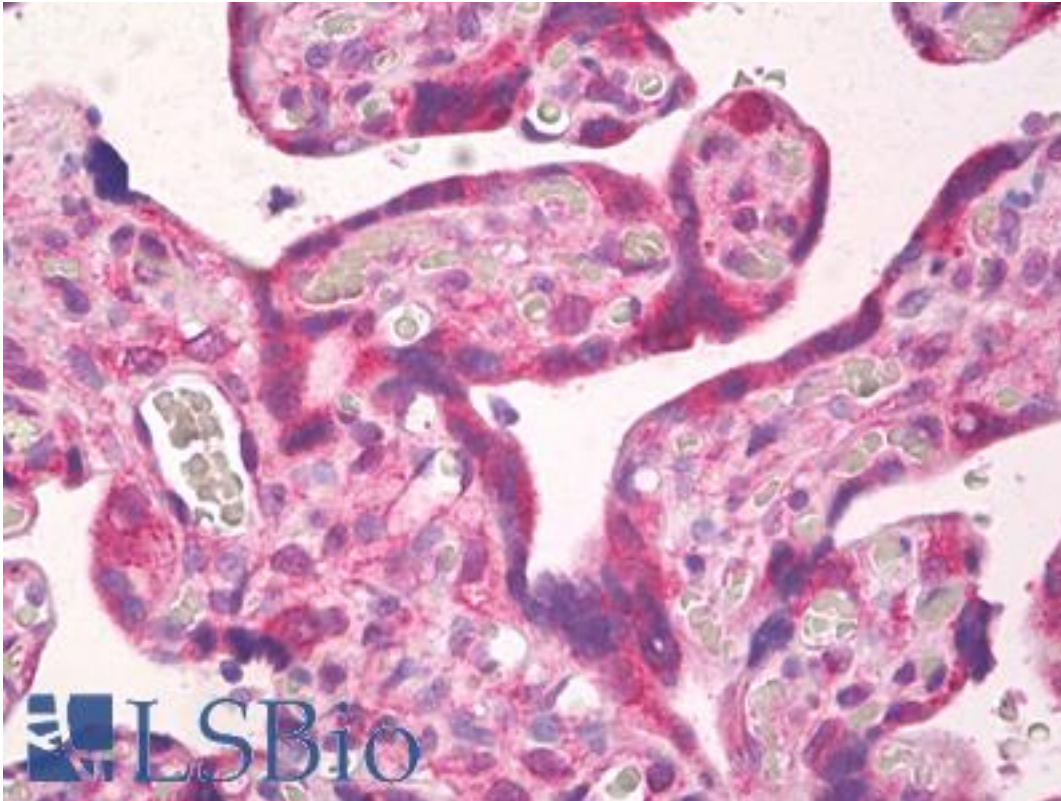


**PDGFRA / PDGFR Alpha Rabbit anti-Human Polyclonal Antibody - LS-B8655 - LSBio**

<b>CatalogID:</b>	LS-B8655
<b>Validation:</b>	This antibody replaces catalog number LS-C88759. It has been validated for use in the following assays: IHC-P.
<b>Target:</b>	platelet-derived growth factor receptor, alpha polypeptide (PDGFRA)
<b>Synonyms:</b>	PDGFRA Antibody, CD140A Antibody, CD140a antigen Antibody, PDGFalphaR Antibody, PDGFR2 Antibody, PDGFRalpha Antibody, AlphaPDGFR Antibody, RHEPDGFRA Antibody, PDGF receptor alpha Antibody, PDGFR-2 Antibody, PDGFRA/BCR fusion Antibody, APDGFR Antibody, Pdgf alpha-receptor Antibody, PDGF-R-alpha Antibody, PDGFR-alpha Antibody
<b>Family / Subfamily:</b>	Protein Kinase / PDGF Receptor
<b>Host</b>	PDGFRA antibody was produced in Rabbit
<b>Clonality:</b>	Polyclonal
<b>Isotype:</b>	IgG
<b>Immunogen Species:</b>	PDGFRA / PDGFR Alpha antibody was raised against Human
<b>Antigen Type:</b>	Synthetic peptide
<b>Immunogen:</b>	PDGFRA / PDGFR Alpha antibody was raised against a synthetic peptide derived from C-terminal of human PDGFR alpha.
<b>Specificity:</b>	C-terminus
<b>Reactivity:</b>	Human, Mouse
<b>Purification:</b>	Affinity purified
<b>Presentation:</b>	10mM PBS, pH 7.6, with 0.2% BSA and 15mM sodium azide
<b>Recommended Storage:</b>	+4°C, avoid freezing
<b>Uses:</b>	IHC - Paraffin (5 µg/ml) (Optimal dilution to be determined by the researcher)
<b>Size:</b>	250 µl

**Immunohistochemistry Image:**



Anti-PDGFR $\alpha$  / PDGFR Alpha antibody IHC of human placenta. Immunohistochemistry of formalin-fixed, paraffin-embedded tissue after heat-induced antigen retrieval. Antibody LS-B8655 dilution 5  $\mu$ g/ml.

**Requested From:**

Japan

Laboratory Reagent For In Vitro Research Use Only

Not for resale without prior written consent from LifeSpan BioSciences, Inc.

Created on 9/24/2014

© 2014 LifeSpan BioSciences