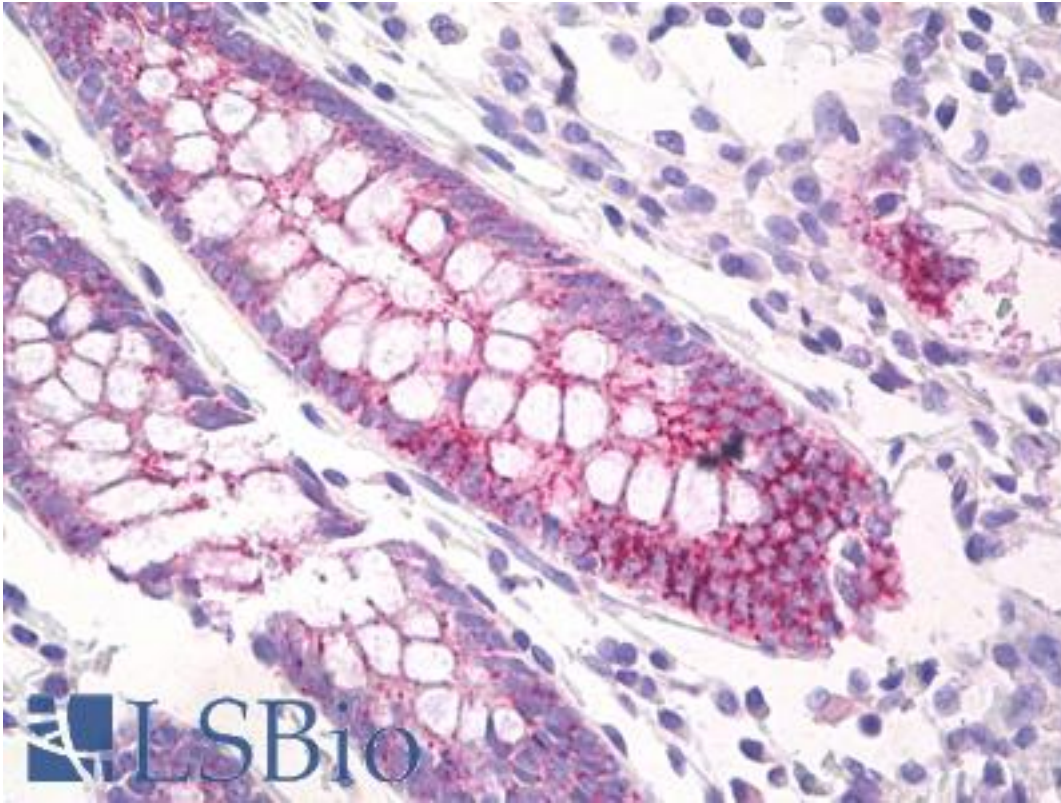


CDH1 / E Cadherin Mouse anti-Human Monoclonal (SPM471) Antibody - LS-B8639 - LSBio

CatalogID:	LS-B8639
Validation:	This antibody replaces catalog number LS-C88558. It has been validated for use in the following assays: IHC-P.
Target:	cadherin 1, type 1, E-cadherin (epithelial) (CDH1)
Synonyms:	CDH1 Antibody, CD324 Antibody, CDHE Antibody, Cell-CAM 120/80 Antibody, E Cadherin Antibody, E-Cadherin Antibody, ECAD Antibody, Epithelial cadherin Antibody, Arc-1 Antibody, UVO Antibody, Cadherin-1 Antibody, CAM 120/80 Antibody, CD324 antigen Antibody, LCAM Antibody, Uvomorulin Antibody
Family / Subfamily:	Cadherin / not assigned-Cadherin
Host	CDH1 antibody was produced in Mouse
Clonality:	Monoclonal
Isotype:	IgG2b,k
Clone Name:	SPM471
Immunogen Species:	CDH1 / E Cadherin antibody was raised against Human
Immunogen:	CDH1 / E Cadherin antibody was raised against recombinant protein encoding human Cadherin-E 600-707aa.
Specificity:	600-707aa
Reactivity:	Human
Purification:	Protein G purified
Presentation:	10mM PBS, pH 7.6, with 0.2% BSA and 15mM sodium azide
Recommended Storage:	+4°C, avoid freezing
Uses:	IHC - Paraffin (20 µg/ml) (Optimal dilution to be determined by the researcher)
Size:	250 µl
Concentration:	200 µg/ml

Immunohistochemistry Image:



Anti-E Cadherin antibody IHC of human colon. Immunohistochemistry of formalin-fixed, paraffin-embedded tissue after heat-induced antigen retrieval. Antibody LS-B8639 dilution 20 ug/ml.

Requested From:

Japan

Laboratory Reagent For In Vitro Research Use Only

Not for resale without prior written consent from LifeSpan BioSciences, Inc.

Created on 9/24/2014

© 2014 LifeSpan BioSciences