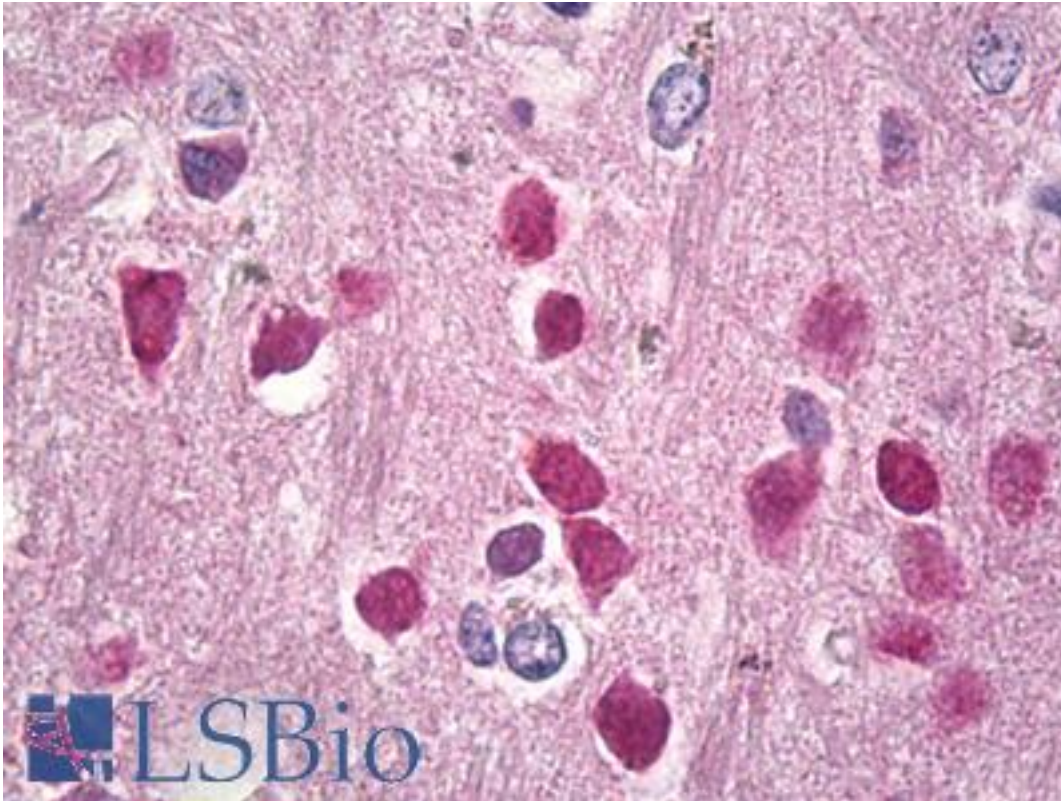


RBL2 / RB2 p130 Mouse anti-Human Monoclonal (130P215) Antibody - LS-B8633 - LSBio	
CatalogID:	LS-B8633
Validation:	This antibody replaces catalog number LS-C88528. It has been validated for use in the following assays: IHC-P.
Target:	retinoblastoma-like 2 (p130) (RBL2)
Synonyms:	RBL2 Antibody, p130 Antibody, Retinoblastoma-like 2 (p130) Antibody, RBR-2 Antibody, Rb2 Antibody, Retinoblastoma-like protein 2 Antibody
Host	RBL2 antibody was produced in Mouse
Clonality:	Monoclonal
Isotype:	IgG1
Clone Name:	130P215
Immunogen Species:	RBL2 / RB2 p130 antibody was raised against Human
Antigen Type:	Synthetic peptide
Immunogen:	RBL2 / RB2 p130 antibody was raised against a synthetic peptide from p130 corresponding to aa878-913.
Specificity:	aa 878-913
Reactivity:	Human, Rat
Purification:	Protein G purified
Presentation:	10mM PBS, pH 7.4, with 0.2% BSA and 0.09% Sodium Azide
Recommended Storage:	+4°C, avoid freezing
Uses:	IHC - Paraffin (10 µg/ml), Immunofluorescence, Western blot (1 - 2 µg/ml), Immunoprecipitation (1 - 2 µg/ml) (Optimal dilution to be determined by the researcher)
Size:	250 µl
Concentration:	0.2 mg/ml

Immunohistochemistry Image:



Anti-RB2 antibody IHC of human brain, cortex. Immunohistochemistry of formalin-fixed, paraffin-embedded tissue after heat-induced antigen retrieval. Antibody LS-B8633 dilution 10 ug/ml.

Requested From:

Japan

Laboratory Reagent For In Vitro Research Use Only

Not for resale without prior written consent from LifeSpan BioSciences, Inc.

Created on 9/24/2014

© 2014 LifeSpan BioSciences