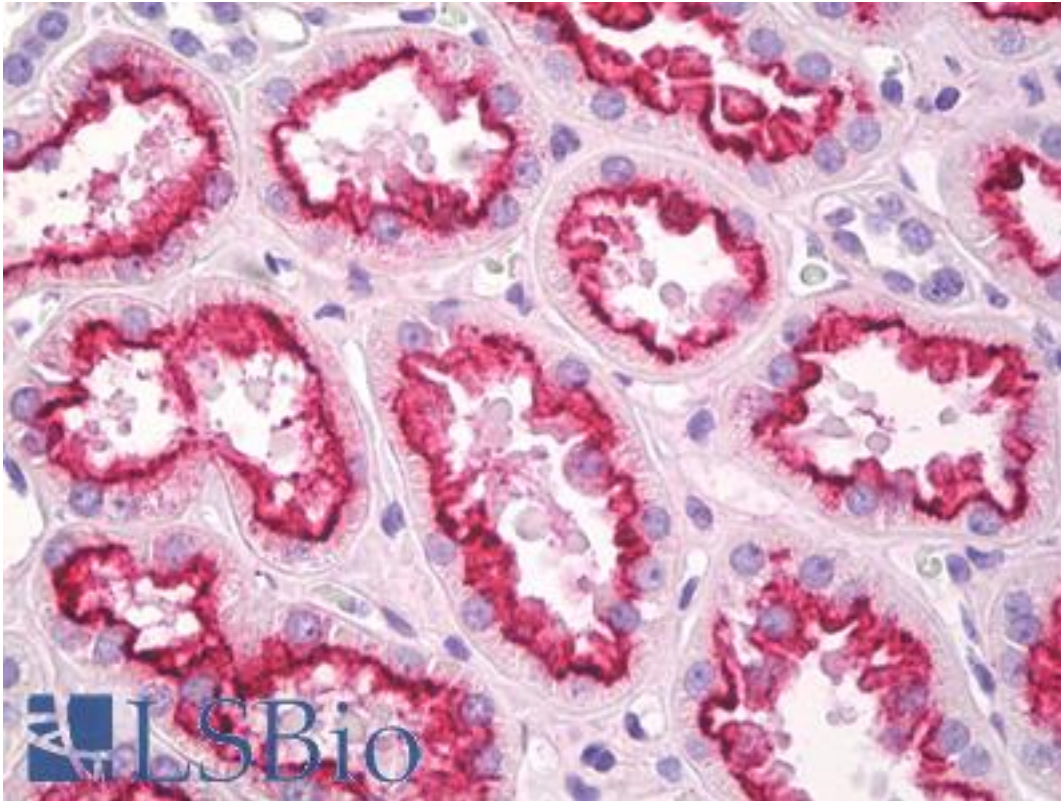


Renal Cell Carcinoma Mouse anti-Human Monoclonal (PN-15) Antibody - LS-B8619 - LSBio	
CatalogID:	LS-B8619
Validation:	This antibody replaces catalog number LS-C88171. It has been validated for use in the following assays: IHC-P.
Target:	Renal Cell Carcinoma
Host	Mouse
Clonality:	Monoclonal
Isotype:	IgG1,k
Clone Name:	PN-15
Immunogen Species:	Human
Antigen Type:	Cell fraction
Immunogen:	Microsomal fraction of human renal cortical tissue homogenate.
Specificity:	Carbohydrate domain
Reactivity:	Human, Rat
Purification:	Protein G purified
Presentation:	10mM PBS, pH 7.4, with 0.2% BSA and 0.09% Sodium Azide
Recommended Storage:	Store at +4°C
Uses:	IHC - Paraffin (10 µg/ml), Western blot (Optimal dilution to be determined by the researcher)
Size:	250 µl
Concentration:	0.2 mg/ml

Immunohistochemistry Image:



Anti-Renal Cell Carcinoma antibody IHC of human kidney, tubules. Immunohistochemistry of formalin-fixed, paraffin-embedded tissue after heat-induced antigen retrieval. Antibody LS-B8619 dilution 10 ug/ml.

Requested From:

Japan

Laboratory Reagent For In Vitro Research Use Only

Not for resale without prior written consent from LifeSpan BioSciences, Inc.

Created on 9/24/2014

© 2014 LifeSpan BioSciences