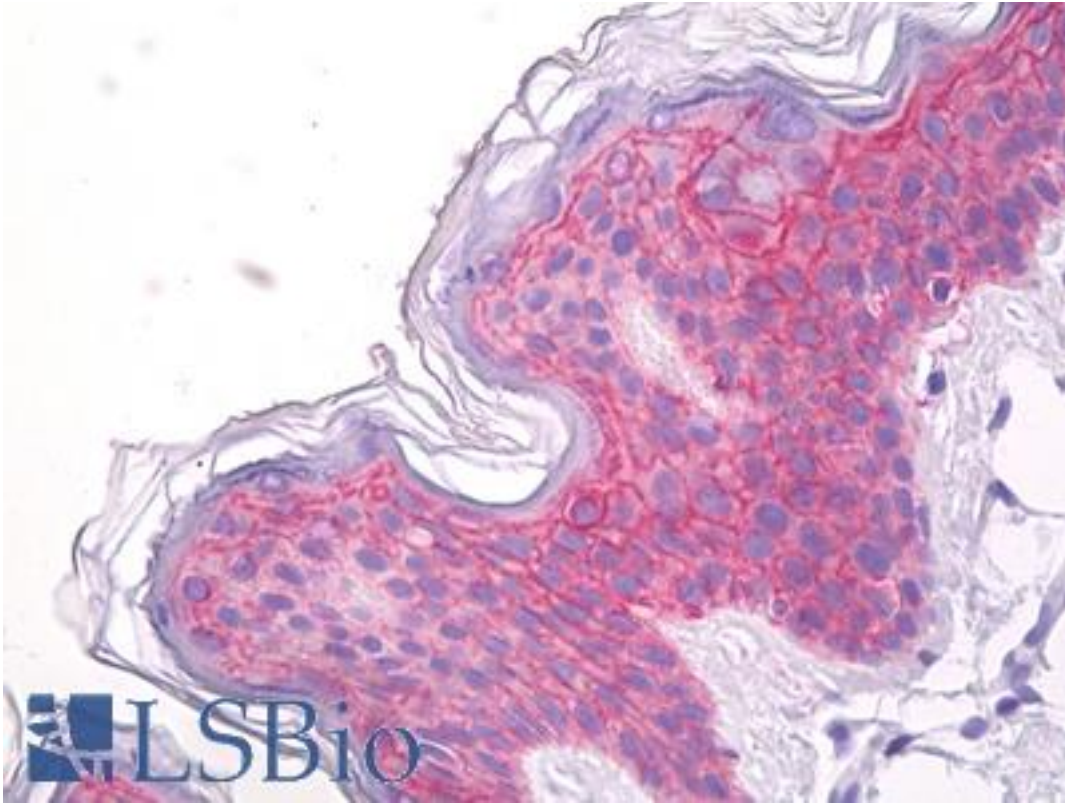


SDC1 / Syndecan 1 / CD138 Mouse anti-Human Monoclonal (MI15) Antibody - LS-B8550 - LSBio	
<b>CatalogID:</b>	LS-B8550
<b>Validation:</b>	This antibody replaces catalog number LS-C87850. It has been validated for use in the following assays: IHC-P.
<b>Target:</b>	syndecan 1 (SDC1)
<b>Synonyms:</b>	SDC1 Antibody, CD138 antigen Antibody, SDC Antibody, SYND1 Antibody, Syndecan Antibody, Syndecan 1 Antibody, Syndecan-1 Antibody, CD138 Antibody, Syndecan proteoglycan 1 Antibody
<b>Host</b>	SDC1 antibody was produced in Mouse
<b>Clonality:</b>	Monoclonal
<b>Isotype:</b>	IgG1,k
<b>Clone Name:</b>	MI15
<b>Immunogen Species:</b>	SDC1 / Syndecan 1 / CD138 antibody was raised against Human
<b>Antigen Type:</b>	Cells
<b>Immunogen:</b>	SDC1 / Syndecan 1 / CD138 antibody was raised against u-266 cells.
<b>Specificity:</b>	Ectodomain
<b>Reactivity:</b>	Human
<b>Purification:</b>	Unpurified
<b>Presentation:</b>	0.09% sodium azide. Tissue Culture Supernatant
<b>Recommended Storage:</b>	+4°C, avoid freezing
<b>Uses:</b>	IHC - Paraffin (1:50), Western blot, Immunoprecipitation (Optimal dilution to be determined by the researcher)
<b>Size:</b>	250 µl

**Immunohistochemistry Image:**



Anti-Syndecan / CD138 antibody IHC of human skin, epidermis. Immunohistochemistry of formalin-fixed, paraffin-embedded tissue after heat-induced antigen retrieval. Antibody LS-B8550 dilution 1:50.

**Requested From:**

Japan

Laboratory Reagent For In Vitro Research Use Only

Not for resale without prior written consent from LifeSpan BioSciences, Inc.

Created on 9/24/2014

© 2014 LifeSpan BioSciences