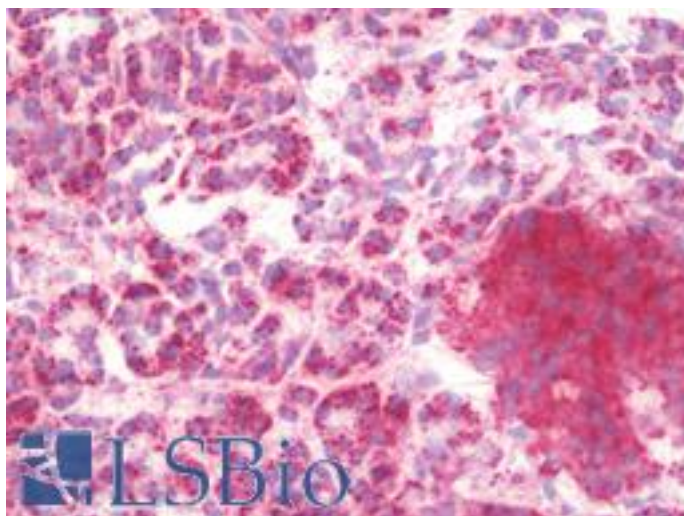


Mitochondria Mouse anti-Rat Monoclonal (MTC02) Antibody - LS-B8523 - LSBio

| | |
|-----------------------------|---|
| CatalogID: | LS-B8523 |
| Validation: | This antibody replaces catalog number LS-C87725. It has been validated for use in the following assays: IHC-Fr. |
| Target: | Mitochondria |
| Host | Mitochondria antibody was produced in Mouse |
| Clonality: | Monoclonal |
| Isotype: | IgG1 |
| Clone Name: | MTC02 |
| Immunogen Species: | Mitochondria antibody was raised against Rat |
| Antigen Type: | Purified protein |
| Immunogen: | Mitochondria antibody was raised against semi-purified mitochondrial preparation. |
| Purification: | Protein G purified |
| Presentation: | 10mM PBS, pH 7.4, with 0.2% BSA and 0.09% Sodium Azide |
| Recommended Storage: | Stable for 24 months when stored at 2-8°C. |
| Usage Summary: | Antibody does not work for IHC-FFPE with rat samples. |
| Uses: | IHC - Frozen (1:50), Immunofluorescence, Western blot (1 - 2 µg/ml) (Optimal dilution to be determined by the researcher) |
| Size: | 250 µl |
| Concentration: | 200 µg/ml |

Immunohistochemistry Image:



IHC with Mitochondria antibody on frozen human pancreas.

| | |
|--|-------|
| Requested From: | Japan |
| Laboratory Reagent For In Vitro Research Use Only | |
| Not for resale without prior written consent from LifeSpan BioSciences, Inc. | |
| Created on 9/24/2014 | |
| © 2014 LifeSpan BioSciences | |