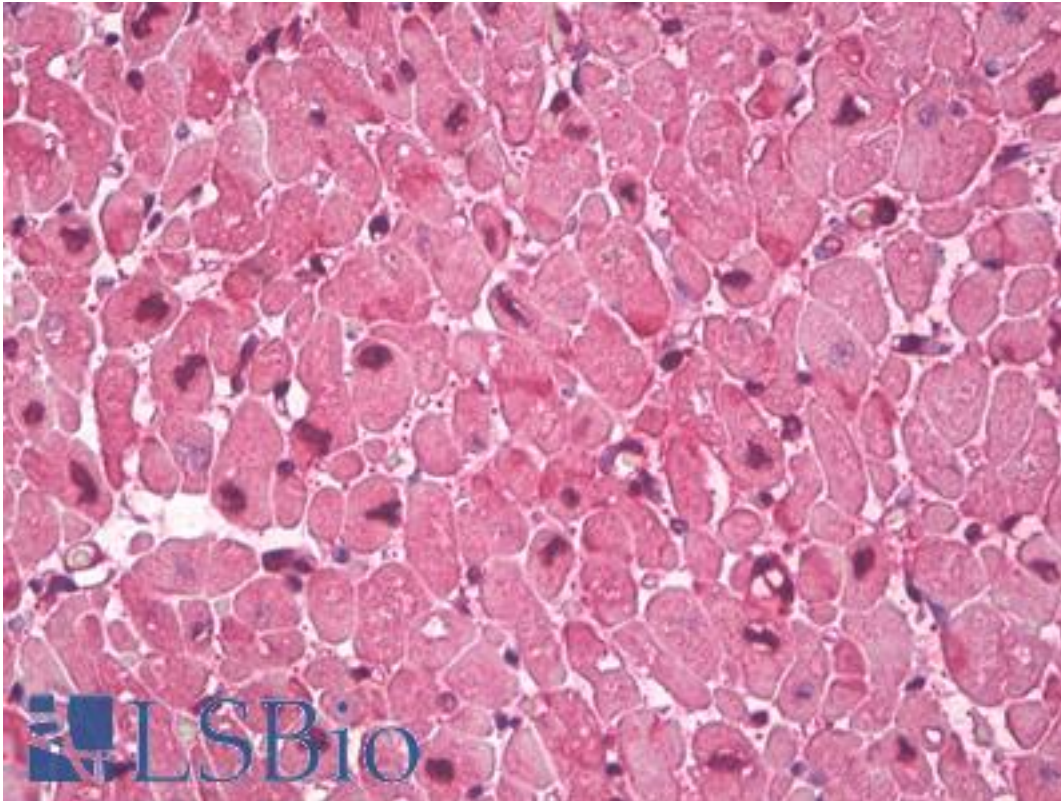


VCL / Vinculin Mouse anti-Human Monoclonal (VLN01) Antibody - LS-B8515 - LSBio	
<b>CatalogID:</b>	LS-B8515
<b>Validation:</b>	This antibody replaces catalog number LS-C87610. It has been validated for use in the following assays: IHC-P.
<b>Target:</b>	vinculin (VCL)
<b>Synonyms:</b>	VCL Antibody, CMD1W Antibody, CMH15 Antibody, Metavinculin Antibody, Vinculin Antibody, MVCL Antibody
<b>Family / Subfamily:</b>	Cytoskeleton
<b>Host</b>	VCL antibody was produced in Mouse
<b>Clonality:</b>	Monoclonal
<b>Isotype:</b>	IgG
<b>Clone Name:</b>	VLN01
<b>Immunogen Species:</b>	VCL / Vinculin antibody was raised against Human
<b>Immunogen:</b>	VCL / Vinculin antibody was raised against semi-purified vinculin.
<b>Reactivity:</b>	Human
<b>Purification:</b>	Protein G purified
<b>Presentation:</b>	10mM PBS, pH 7.4, with 0.2% BSA and 0.09% Sodium Azide
<b>Recommended Storage:</b>	+4°C, avoid freezing
<b>Uses:</b>	IHC - Paraffin (5 µg/ml), Immunofluorescence, Western blot (1:50) & (1 - 2 µg/ml), Immunoprecipitation (1:50) (Optimal dilution to be determined by the researcher)
<b>Size:</b>	250 µl
<b>Concentration:</b>	200 µg/ml

**Immunohistochemistry Image:**



Anti-Vinculin antibody IHC of human heart, intercalated disk. Immunohistochemistry of formalin-fixed, paraffin-embedded tissue after heat-induced antigen retrieval. Antibody LS-B8515 dilution 5 ug/ml.

**Requested From:**

Japan

Laboratory Reagent For In Vitro Research Use Only

Not for resale without prior written consent from LifeSpan BioSciences, Inc.

Created on 9/24/2014

© 2014 LifeSpan BioSciences