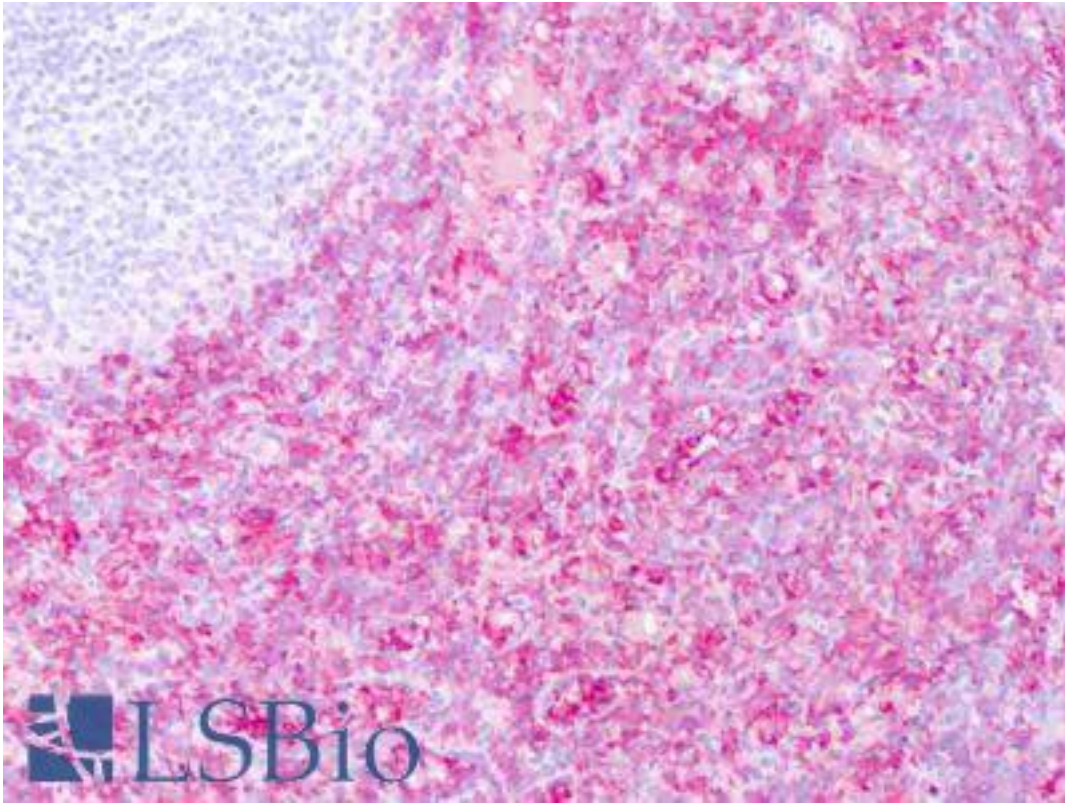


CD16 Mouse anti-Human Monoclonal (DJ130c) Antibody - LS-B8501 - LSBio	
CatalogID:	LS-B8501
Validation:	This antibody replaces catalog number LS-C121507. It has been validated for use in the following assays: IHC-P.
Target:	CD16
Host	CD16 antibody was produced in Mouse
Clonality:	Monoclonal
Isotype:	IgG1
Clone Name:	DJ130c
Immunogen Species:	CD16 antibody was raised against Human
Immunogen:	CD16 antibody was raised against cD34 antigen.
Specificity:	Recognizes human CD16.
Reactivity:	Human
Purification:	Protein G purified
Presentation:	PBS, pH 7.4, 0.09% sodium azide
Recommended Storage:	May be stored at 4°C for short-term only. For long-term storage and to avoid repeated freezing and thawing, aliquot and store at -20°C. Aliquots are stable for at least 12 months at -20°C
Usage Summary:	Suitable for use in Flow Cytometry and Immunohistochemistry (frozen and paraffin). Immunohistochemistry (paraffin): Requires antigen retrieval using heat treatment prior to staining of paraffin sections. Flow Cytometry: 10 ul labels 10 ⁶ cells in 100ul.
Uses:	IHC - Paraffin (5 - 10 µg/ml), IHC - Frozen, Flow Cytometry (Optimal dilution to be determined by the researcher)
Size:	100 µg
Concentration:	1 mg/ml

Immunohistochemistry Image:



Anti-CD16 antibody IHC of human spleen. Immunohistochemistry of formalin-fixed, paraffin-embedded tissue after heat-induced antigen retrieval. Antibody LS-B8501 dilution 5-10 ug/ml.

Requested From:

Japan

Laboratory Reagent For In Vitro Research Use Only

Not for resale without prior written consent from LifeSpan BioSciences, Inc.

Created on 9/24/2014

© 2014 LifeSpan BioSciences