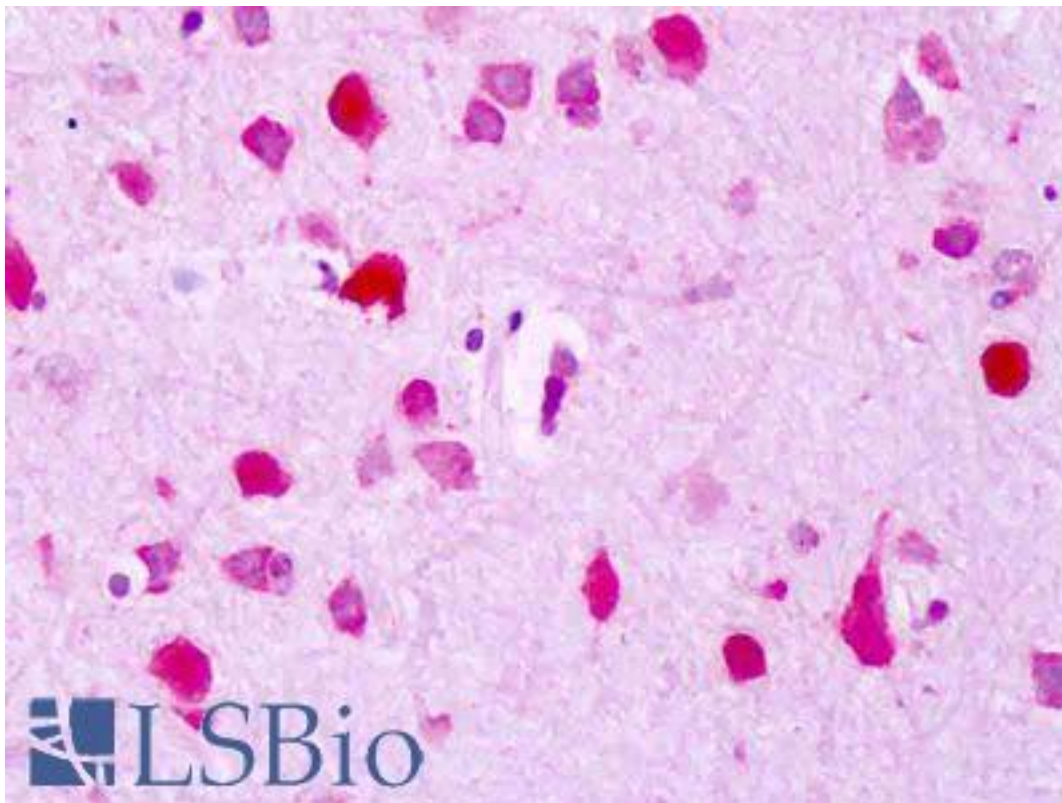


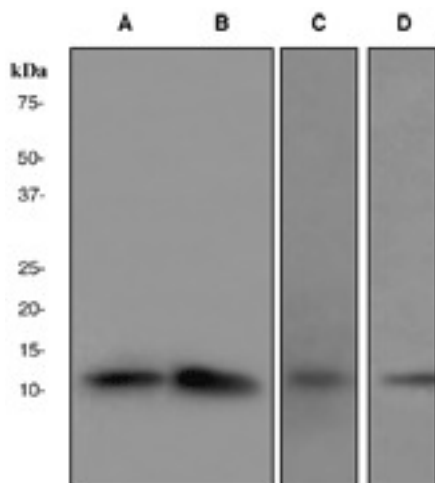
DOC-1 / CDK2AP1 Rabbit anti-Human Monoclonal (Internal) (Clone-R76) Antibody - LS-B8493 - LSBio	
CatalogID:	LS-B8493
Validation:	This antibody replaces catalog number LS-C137790. It has been validated for use in the following assays: IHC-P.
Target:	cyclin-dependent kinase 2 associated protein 1 (CDK2AP1)
Synonyms:	CDK2AP1 Antibody, Doc-1 Antibody, DORC1 Antibody, Deleted in oral cancer 1 Antibody, Deleted in oral cancer-1 Antibody, p12DOC-1 Antibody, ST19 Antibody, CDK2-associated protein 1 Antibody, CDKAP1 Antibody, DOC1 Antibody
Host	CDK2AP1 antibody was produced in Rabbit
Clonality:	Monoclonal
Clone Name:	Clone-R76
Immunogen Species:	DOC-1 / CDK2AP1 antibody was raised against Human
Antigen Type:	Synthetic peptide
Immunogen:	DOC-1 / CDK2AP1 antibody was raised against synthetic peptide
Specificity:	Human Doc-1. Species cross-reactivity is based on WB analysis.
Epitope:	Internal
Reactivity:	Human
Purification:	Tissue culture supernatant
Presentation:	Tris-Glycine-NaCl or PBS, pH 7.2-7.4, 40-50% Glycerol, 0.01% sodium azide, 0.05% BSA
Recommended Storage:	Store at -20°C.
Uses:	IHC - Paraffin (1:50 - 1:100), Western blot (1:1000 - 1:10000) (Optimal dilution to be determined by the researcher)
Size:	50 µl

Immunohistochemistry Image:



Anti-DOC-1 / CDK2AP1 antibody IHC of human brain, cortex. Immunohistochemistry of formalin-fixed, paraffin-embedded tissue after heat-induced antigen retrieval. Antibody LS-B8493 dilution 1:50-1:100.

Western Blot Image:



Western blot analysis on (A) 293T, (B) HeLa, (C) HUVEC, and (D) LNCaP cell lysates using anti-CDK2AP1 antibody. Note: Dilute primary antibody in 1% BSA.

Requested From:

Japan

Laboratory Reagent For In Vitro Research Use Only

Not for resale without prior written consent from LifeSpan BioSciences, Inc.

Created on 9/24/2014

© 2014 LifeSpan BioSciences