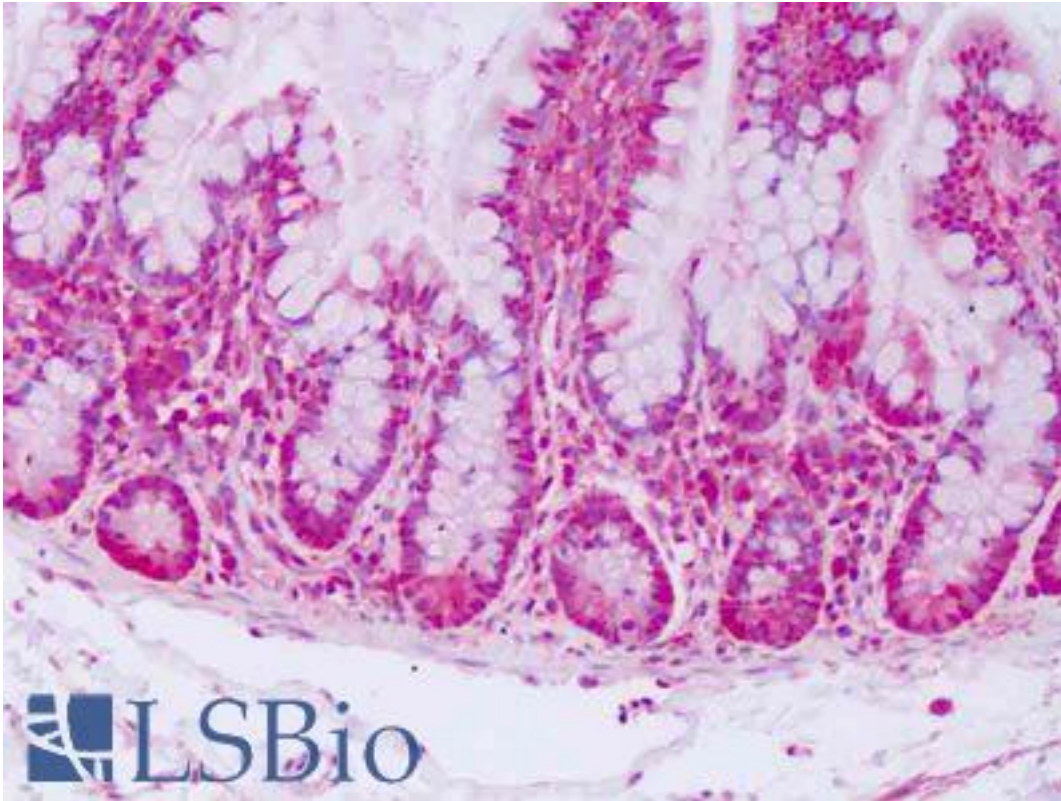


SOD1 / SOD Mouse anti-Human Monoclonal Antibody - LS-B8489 - LSBio

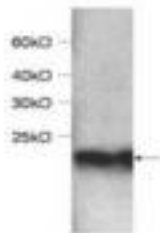
CatalogID:	LS-B8489
Validation:	This antibody replaces catalog number LS-C137583. It has been validated for use in the following assays: IHC-P.
Target:	superoxide dismutase 1, soluble (SOD1)
Synonyms:	SOD1 Antibody, ALS Antibody, ALS1 Antibody, Cu/Zn superoxide dismutase Antibody, HSod1 Antibody, Homodimer Antibody, IPOA Antibody, SOD, soluble Antibody, SOD Antibody, Superoxide dismutase [Cu-Zn] Antibody, Superoxide dismutase 1 Antibody, Indophenoloxidase A Antibody, Superoxide dismutase, cystolic Antibody
Host	SOD1 antibody was produced in Mouse
Clonality:	Monoclonal
Isotype:	IgG1
Immunogen Species:	SOD1 / SOD antibody was raised against Human
Antigen Type:	Recombinant protein
Immunogen:	SOD1 / SOD antibody was raised against recombinant protein
Specificity:	Anti-SOD1 recognizes SOD1 expression in Hela whole cell lysate.
Reactivity:	Human
Purification:	Affinity purified
Presentation:	Citrate-Tris-HCl buffer, pH 7.0, 0.02% Proclin 300
Recommended Storage:	Store at -20°C for up to one year.
Uses:	IHC - Paraffin (1:50 - 1:100), Western blot (1:1000), ELISA (Optimal dilution to be determined by the researcher)
Size:	50 µl

Immunohistochemistry Image:



Anti-SOD1 / SOD antibody IHC of human small intestine. Immunohistochemistry of formalin-fixed, paraffin-embedded tissue after heat-induced antigen retrieval. Antibody LS-B8489 dilution 1:50-1:100.

Western Blot Image:



Requested From:

Japan

Laboratory Reagent For In Vitro Research Use Only

Not for resale without prior written consent from LifeSpan BioSciences, Inc.

Created on 9/24/2014

© 2014 LifeSpan BioSciences