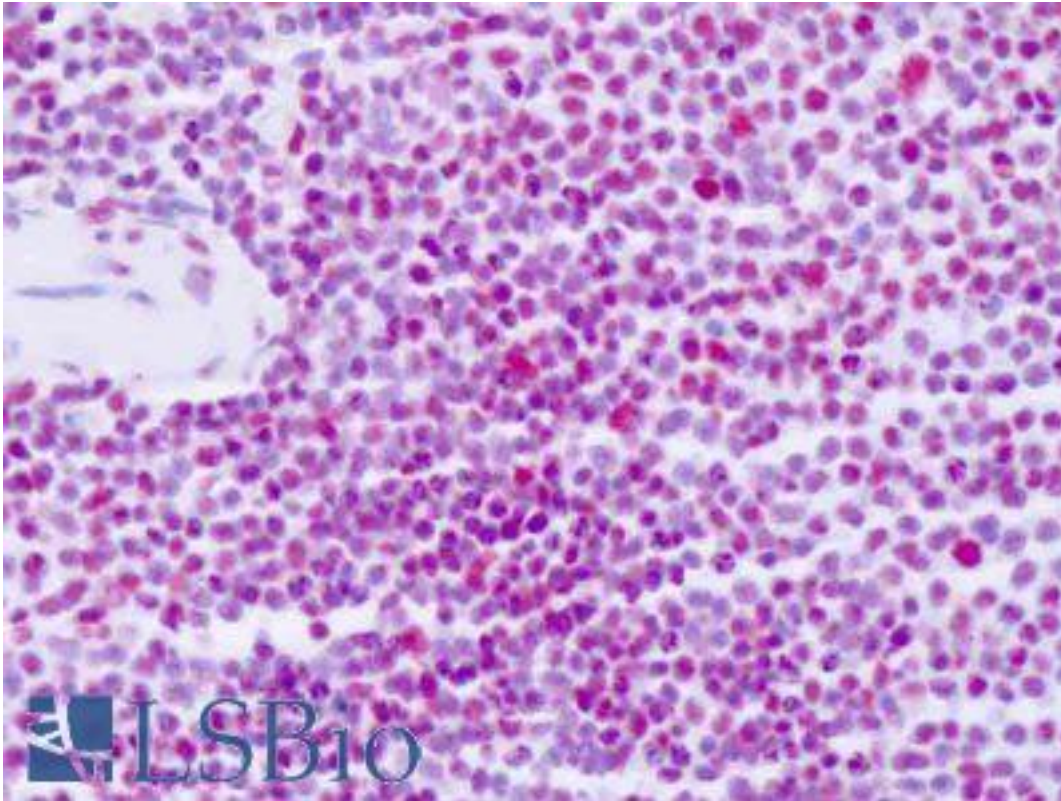


PABPN1 / PABP2 Rabbit anti-Human Monoclonal (Internal) (EP3001Y) Antibody - LS-B8482 - LSBio

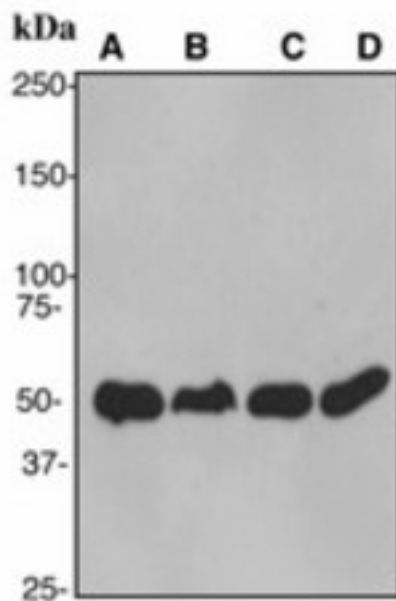
CatalogID:	LS-B8482
Validation:	This antibody replaces catalog number LS-C105454. It has been validated for use in the following assays: IHC-P.
Target:	poly(A) binding protein, nuclear 1 (PABPN1)
Synonyms:	PABPN1 Antibody, PABP2 Antibody, Poly(A)-binding protein 2 Antibody, OPMD Antibody, PABII Antibody, PABP-2 Antibody, Poly(A) binding protein 2 Antibody, Poly(A) binding protein II Antibody, Poly(A)-binding protein II Antibody, PAB2 Antibody
Host	PABPN1 antibody was produced in Rabbit
Clonality:	Monoclonal
Isotype:	IgG
Clone Name:	EP3001Y
Immunogen Species:	PABPN1 / PABP2 antibody was raised against Human
Antigen Type:	Synthetic peptide
Immunogen:	PABPN1 / PABP2 antibody was raised against a synthetic peptide corresponding to residues in human PABP2 was used as an immunogen.
Epitope:	Internal
Reactivity:	Human, Mouse
Purification:	Tissue culture supernatant
Presentation:	Tris-Glycine-NaCl or PBS, pH 7.2-7.4, 40-50% Glycerol, 0.01% sodium azide, 0.05% BSA
Recommended Storage:	Long term: -20°C; Short term: +4°C. Avoid repeat freeze-thaw cycles.
Uses:	IHC - Paraffin (1:50 - 1:100), ICC (1:100 - 1:250), Western blot (1:10000 - 1:50000), Flow Cytometry (1:60) (Optimal dilution to be determined by the researcher)
Size:	50 µl

Immunohistochemistry Image:



Anti-PABPN1 / PABP2 antibody IHC of human spleen. Immunohistochemistry of formalin-fixed, paraffin-embedded tissue after heat-induced antigen retrieval. Antibody LS-B8482 dilution 1:50-1:100.

Western Blot Image:



Western blot analysis on (A) T47D, (B) SKBR3, (C) Ramos and (D) Raji cell lysates using anti-PABPN1/PABP2 antibody (LS-B8482), dilution 1:20000.

Requested From:

Japan

Laboratory Reagent For In Vitro Research Use Only

Not for resale without prior written consent from LifeSpan BioSciences, Inc.

Created on 9/24/2014

© 2014 LifeSpan BioSciences