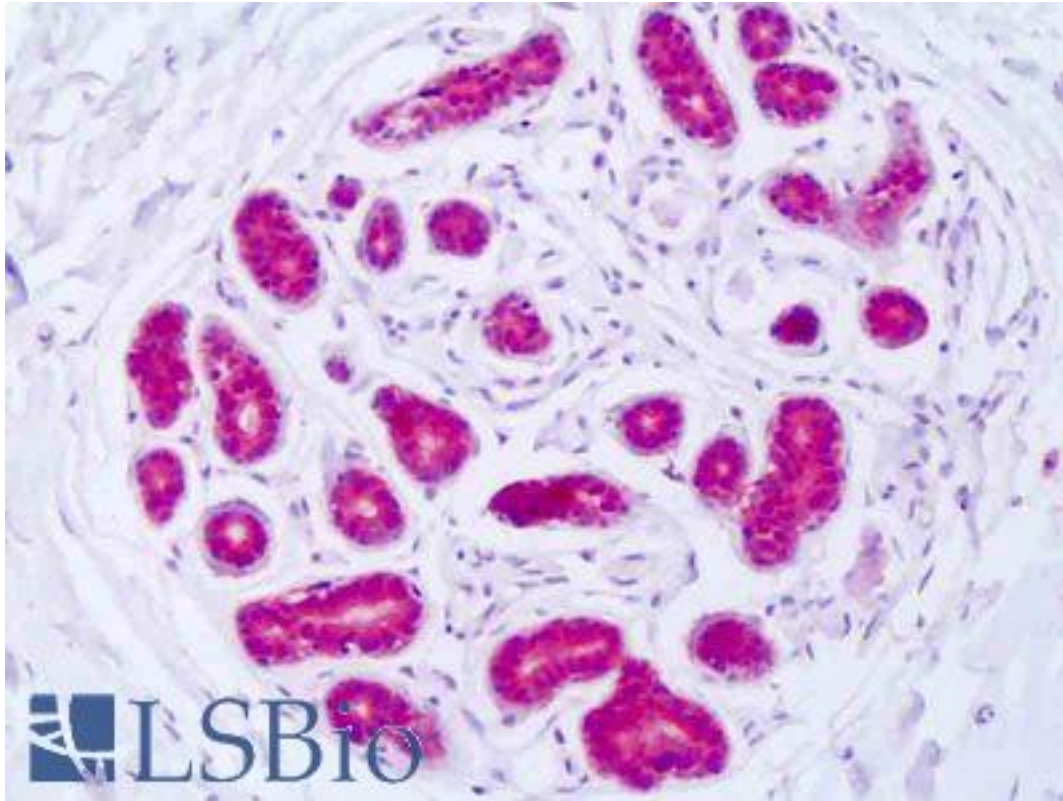


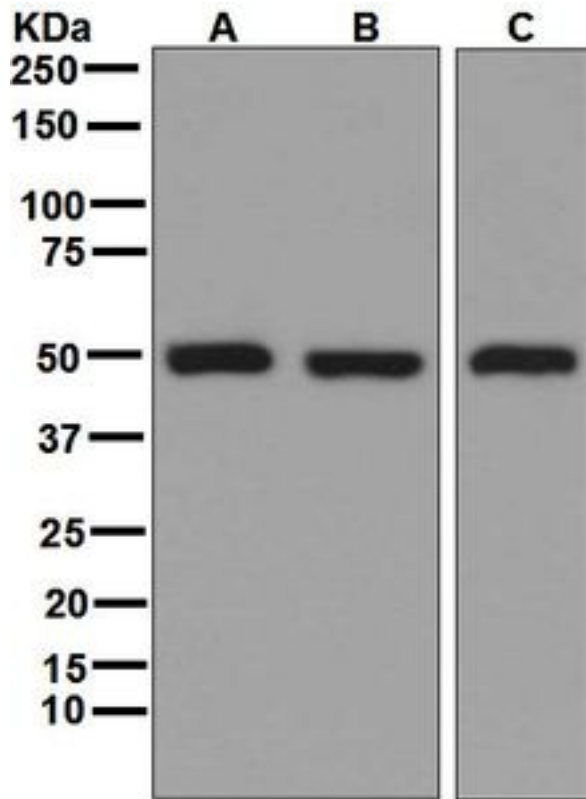
GSS / Glutathione Synthetase Rabbit anti-Human Monoclonal (Internal) (EPR6563) Antibody - LS-B8481 - LSBio	
CatalogID:	LS-B8481
Validation:	This antibody replaces catalog number LS-C138976. It has been validated for use in the following assays: IHC-P.
Target:	glutathione synthetase (GSS)
Synonyms:	GSS Antibody, GSH-S Antibody, GSHS Antibody, Glutathione synthase Antibody, Glutathione synthetase Antibody, GSH synthetase Antibody
Host	GSS antibody was produced in Rabbit
Clonality:	Monoclonal
Clone Name:	EPR6563
Immunogen Species:	GSS / Glutathione Synthetase antibody was raised against Human
Antigen Type:	Synthetic peptide
Immunogen:	GSS / Glutathione Synthetase antibody was raised against synthetic peptide
Specificity:	Human GSS. Species cross-reactivity is based on WB analysis.
Epitope:	Internal
Reactivity:	Human, Mouse, Rat
Purification:	Tissue culture supernatant
Presentation:	Tris-Glycine-NaCl or PBS, pH 7.2-7.4, 40-50% Glycerol, 0.01% sodium azide, 0.05% BSA
Recommended Storage:	Store at -20°C.
Uses:	IHC - Paraffin (1:50 - 1:100), ICC (1:50 - 1:100), Western blot (1:1000 - 1:10000), Flow Cytometry (1:10 - 1:100) (Optimal dilution to be determined by the researcher)
Size:	50 µl

Immunohistochemistry Image:



Anti-GSS / Glutathione Synthetase antibody IHC of human breast epithelium.
Immunohistochemistry of formalin-fixed, paraffin-embedded tissue after heat-induced antigen
retrieval. Antibody LS-B8481 dilution 1:50-1:100.

Western Blot Image:



Western blot analysis on (A) 293T, (B) HeLa, (C) HT-1080 cell lysates using anti-GSS antibody.

Requested From:

Japan

Laboratory Reagent For In Vitro Research Use Only

Not for resale without prior written consent from LifeSpan BioSciences, Inc.

Created on 9/24/2014

© 2014 LifeSpan BioSciences