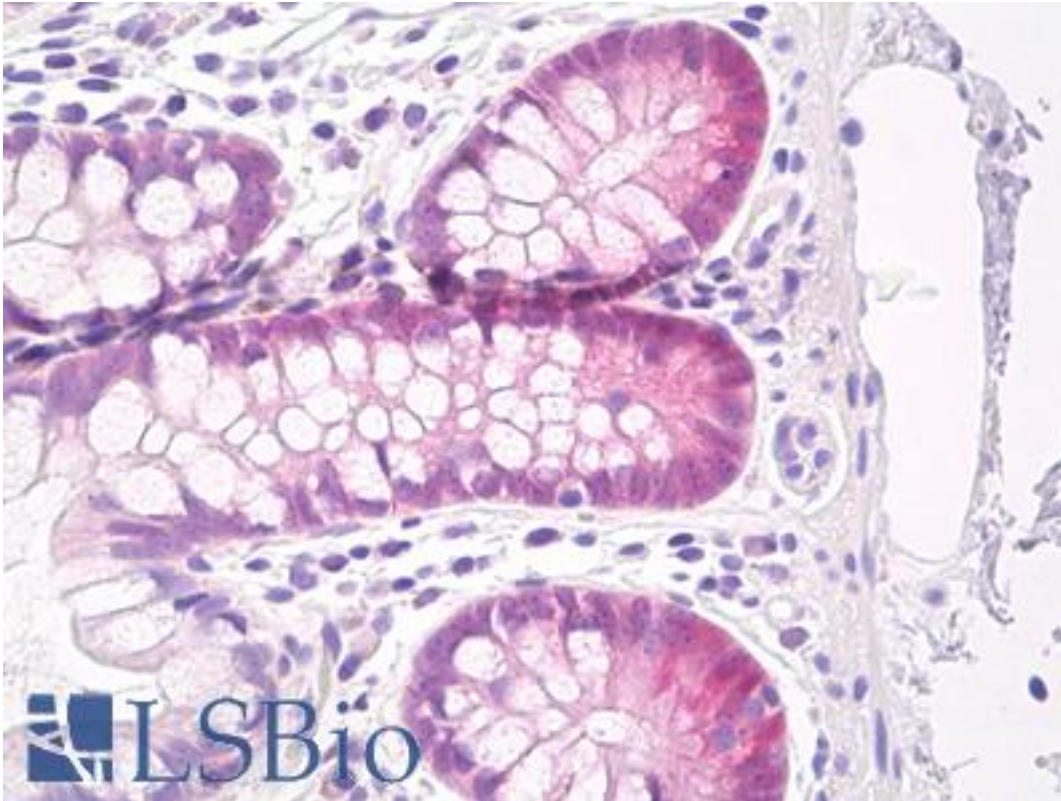


**GPX2 Rabbit Polyclonal Antibody - LS-B8474 - LSBio**

<b>CatalogID:</b>	LS-B8474
<b>Validation:</b>	This antibody replaces catalog number LS-C154754. It has been validated for use in the following assays: IHC-P.
<b>Target:</b>	glutathione peroxidase 2 (gastrointestinal) (GPX2)
<b>Synonyms:</b>	GPX2 Antibody, GPx-GI Antibody, GPRP Antibody, GPx-2 Antibody, GI-GPx Antibody, Glutathione peroxidase 2 Antibody, GPRP-2 Antibody, GSHPx-2 Antibody, GSHPX-GI Antibody
<b>Host</b>	GPX2 antibody was produced in Rabbit
<b>Clonality:</b>	Polyclonal
<b>Antigen Type:</b>	Synthetic peptide
<b>Immunogen:</b>	GPX2 antibody was raised against synthetic peptide derived from Cter domain of GPx-2 protein
<b>Specificity:</b>	Reacts with the 22 kDa GPx-2 protein.
<b>Reactivity:</b>	Human, Mouse, Rat
<b>Purification:</b>	Protein A purified
<b>Reconstitution:</b>	Distilled water
<b>Presentation:</b>	Lyophilized from Tris 0.1M, Glycine 0.1M, Sucrose 2%
<b>Recommended Storage:</b>	Lyophilized powder stable for a minimum of 2 years at -20°C. Store reconstituted antibodies at 4°C. For extended periods store in aliquots at -20°C.
<b>Uses:</b>	IHC - Paraffin (10 µg/ml), Western blot (1:250 - 1:5000), ELISA (Optimal dilution to be determined by the researcher)
<b>Size:</b>	50 µg

**Immunohistochemistry Image:**



Anti-GPX2 antibody IHC of human small intestine. Immunohistochemistry of formalin-fixed, paraffin-embedded tissue after heat-induced antigen retrieval. Antibody LS-B8474 dilution 10 ug/ml.

**Requested From:**

Japan

Laboratory Reagent For In Vitro Research Use Only

Not for resale without prior written consent from LifeSpan BioSciences, Inc.

Created on 9/24/2014

© 2014 LifeSpan BioSciences