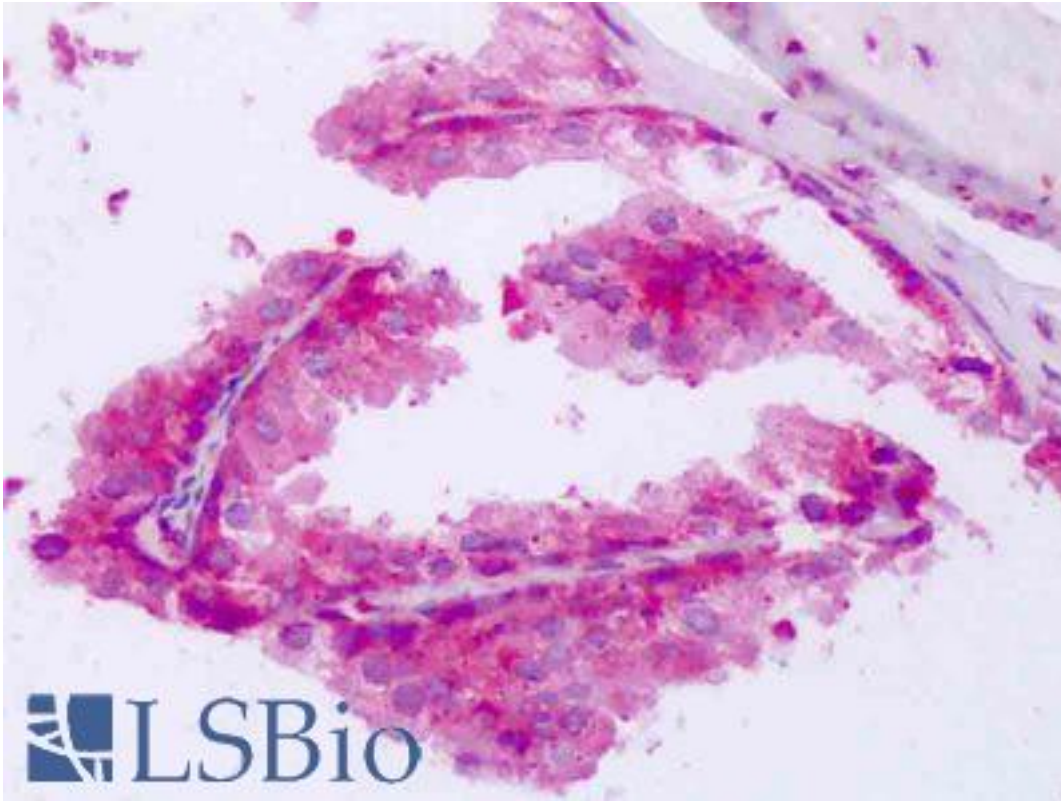


**PABPC1 / PABP1 Rabbit anti-Human Polyclonal (Internal) Antibody - LS-B8470 - LSBio**

<b>CatalogID:</b>	LS-B8470
<b>Validation:</b>	This antibody replaces catalog number LS-C153415. It has been validated for use in the following assays: IHC-P.
<b>Target:</b>	poly(A) binding protein, cytoplasmic 1 (PABPC1)
<b>Synonyms:</b>	PABPC1 Antibody, PABP-1 Antibody, PABP1 Antibody, PABPC2 Antibody, PABPL1 Antibody, PABP Antibody, Poly(A)-binding protein 1 Antibody
<b>Host</b>	PABPC1 antibody was produced in Rabbit
<b>Clonality:</b>	Polyclonal
<b>Immunogen Species:</b>	PABPC1 / PABP1 antibody was raised against Human
<b>Antigen Type:</b>	Synthetic peptide
<b>Immunogen:</b>	PABPC1 / PABP1 antibody was raised against synthetic peptide derived from internal domain of human PABP-1 protein.
<b>Specificity:</b>	Reacts with human 70 kD PABP-1 protein. Cross reacts with proteins from mouse, rat and other species.
<b>Epitope:</b>	Internal
<b>Reactivity:</b>	Human, Mouse, Rat
<b>Purification:</b>	Protein A purified
<b>Reconstitution:</b>	Distilled water. Possible additional volumes for resuspension: 100 µl
<b>Presentation:</b>	100 mM Tris-glycine, 2% sucrose
<b>Recommended Storage:</b>	Lyophilized powder stable for a minimum of 2 years at -20°C. Store reconstituted antibodies at 4°C. For extended periods store in aliquots at -20°C.
<b>Uses:</b>	IHC - Paraffin (5 - 10 µg/ml), Western blot, ELISA (Optimal dilution to be determined by the researcher)
<b>Size:</b>	100 µg
<b>Concentration:</b>	1 mg/ml (after resuspension)

**Immunohistochemistry Image:**



Anti-PABPC1 / PABP1 antibody IHC of human prostate. Immunohistochemistry of formalin-fixed, paraffin-embedded tissue after heat-induced antigen retrieval. Antibody LS-B8470 dilution 5-10 ug/ml.

**Requested From:**

Japan

Laboratory Reagent For In Vitro Research Use Only

Not for resale without prior written consent from LifeSpan BioSciences, Inc.

Created on 9/24/2014

© 2014 LifeSpan BioSciences