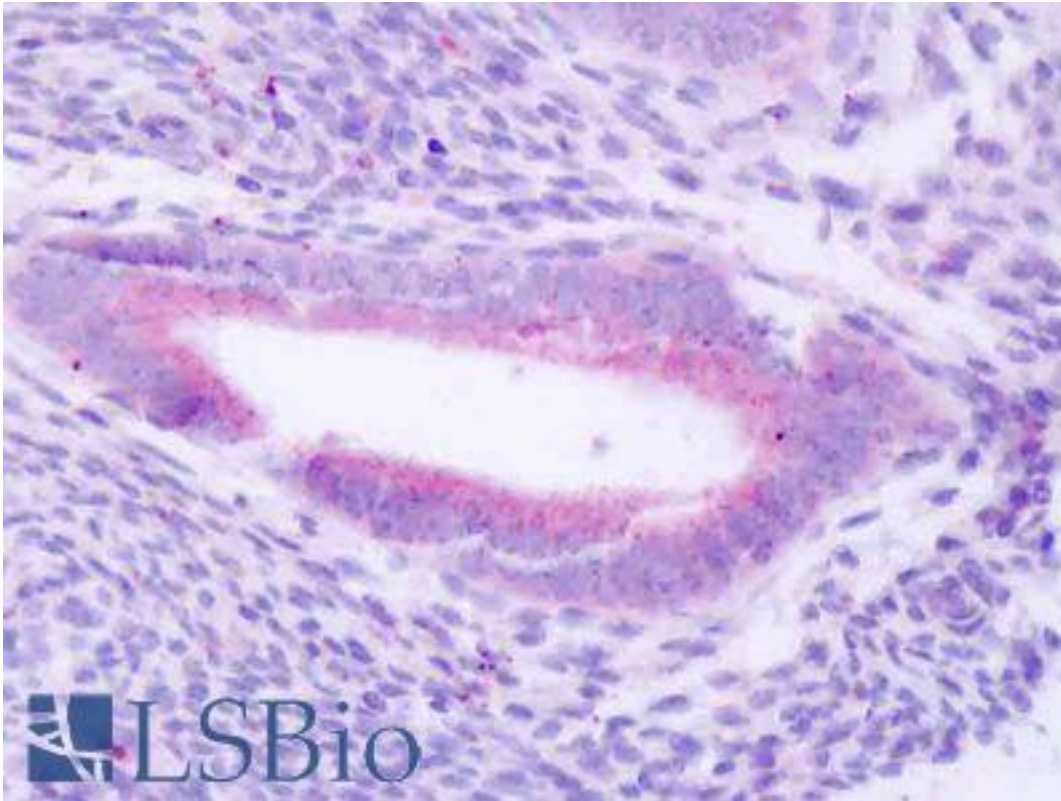


PLCZ1 Rabbit anti-Human Polyclonal (Internal) Antibody - LS-B8469 - LSBio

CatalogID:	LS-B8469
Validation:	This antibody replaces catalog number LS-C153412. It has been validated for use in the following assays: IHC-P.
Target:	Phospholipase C, Zeta 1 (PLCZ1)
Synonyms:	PLCZ1 Antibody
Host	PLCZ1 antibody was produced in Rabbit
Clonality:	Polyclonal
Immunogen Species:	PLCZ1 antibody was raised against Human
Antigen Type:	Synthetic peptide
Immunogen:	PLCZ1 antibody was raised against synthetic peptides derived from internal parts of PLC-zeta-1.
Specificity:	Reacts with human PLC zeta protein. No cross reaction.
Epitope:	Internal
Reactivity:	Human
Purification:	Protein A purified
Reconstitution:	Distilled water. Possible additional volumes for resuspension: 100 µl
Presentation:	100 mM Tris-glycine, 2% sucrose
Recommended Storage:	Lyophilized powder stable for a minimum of 2 years at -20°C. Store reconstituted antibodies at 4°C. For extended periods store in aliquots at -20°C.
Uses:	IHC - Paraffin (10 µg/ml), Western blot, ELISA (Optimal dilution to be determined by the researcher)
Size:	100 µg
Concentration:	1 mg/ml (after resuspension)

Immunohistochemistry Image:



Human, Uterus: Formalin-Fixed Paraffin-Embedded (FFPE)

Requested From:

Japan

Laboratory Reagent For In Vitro Research Use Only

Not for resale without prior written consent from LifeSpan BioSciences, Inc.

Created on 9/24/2014

© 2014 LifeSpan BioSciences