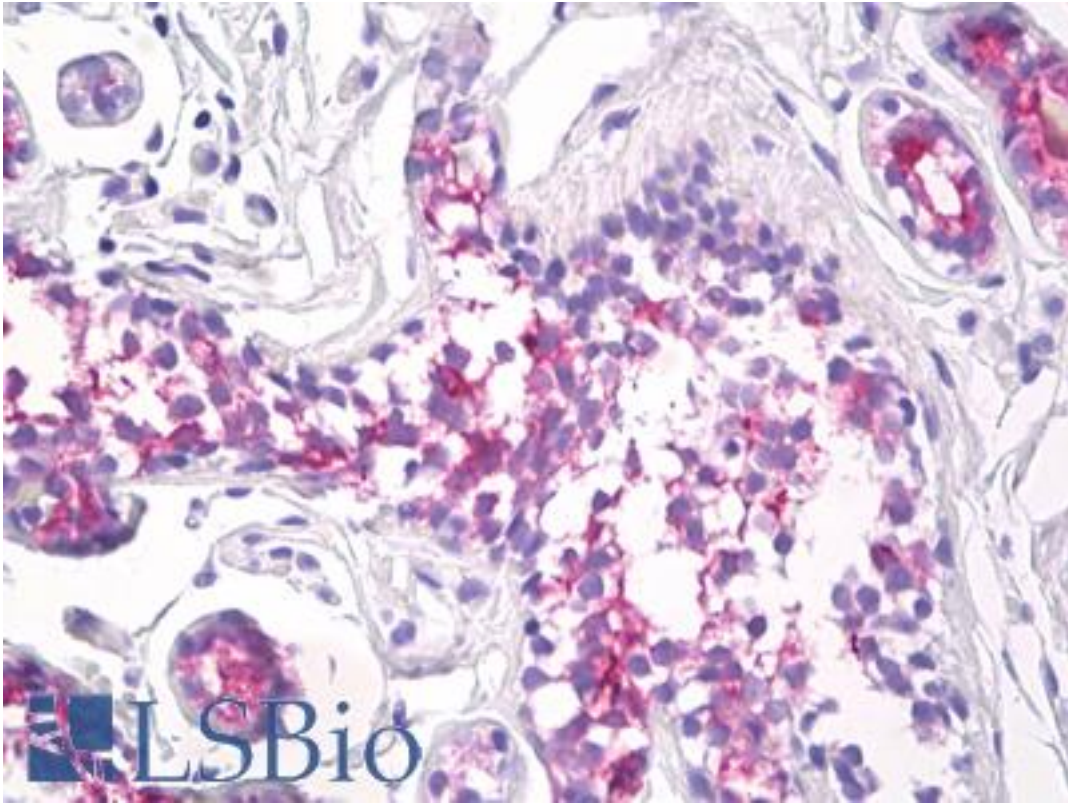


| EMA / MUC1 Mouse-Balb/c anti-Human Monoclonal (175C5) Antibody - LS-B8466 - LSBio | |
|-----------------------------------------------------------------------------------|---------------------------------------------------------------------------------------------------------------------------------------------------------------------------------------------------------------------------------------------------------------------------------------------------------------------------------------------------------------------------------------------------------------------------------------------------------------------------------------------------------------------------------------------------------------------------------------|
| CatalogID: | LS-B8466 |
| Validation: | This antibody replaces catalog number LS-C150501. It has been validated for use in the following assays: IHC-P. |
| Target: | mucin 1, cell surface associated (MUC1) |
| Synonyms: | MUC1 Antibody, CA15-3 Antibody, CD227 Antibody, Carcinoma-associated mucin Antibody, CD227 antigen Antibody, DF3 antigen Antibody, Episialin Antibody, Epithelial membrane antigen Antibody, H23 antigen Antibody, H23AG Antibody, Krebs von den Lungen-6 Antibody, MAM6 Antibody, MUC1/ZD Antibody, MUC-1/SEC Antibody, Mucin-1 Antibody, Pem Antibody, KL-6 Antibody, MUC-1/X Antibody, Tumor-associated mucin Antibody, Peanut-reactive urinary mucin Antibody, Polymorphic epithelial mucin Antibody, PUM Antibody, EMA Antibody, MUC-1 Antibody, Mucin 1, transmembrane Antibody |
| Family / Subfamily: | Mucin / not assigned-Mucin |
| Host | MUC1 antibody was produced in Mouse-Balb/c |
| Clonality: | Monoclonal |
| Isotype: | IgG1 |
| Clone Name: | 175C5 |
| Immunogen Species: | EMA / MUC1 antibody was raised against Human |
| Immunogen: | EMA / MUC1 antibody was raised against human mammary carcinoma cell line (ZR-75-1) |
| Specificity: | shows a high preference for breast carcinomas relative to normal breast epithelium. Theantibdy reacts with a carcinoma-associated antigen in both adenocarcinomas and squamous cellcarcinomas of different origins. |
| Reactivity: | Human |
| Purification: | Purified |
| Presentation: | PBS containing 0.09% sodium azide |
| Recommended Storage: | Short term 4°C, long term aliquot and store at -20°C, avoid freeze thaw cycles. |
| Uses: | IHC - Paraffin (10 µg/ml), IHC - Frozen, Immunofluorescence, Western blot, Immunoprecipitation, Flow Cytometry, ELISA, Electron Microscopy (Optimal dilution to be determined by the researcher) |
| Size: | 50 µg |

Immunohistochemistry Image:



Anti-MUC1 antibody IHC of human breast. Immunohistochemistry of formalin-fixed, paraffin-embedded tissue after heat-induced antigen retrieval. Antibody LS-B8466 dilution 10 ug/ml.

Requested From:

Japan

Laboratory Reagent For In Vitro Research Use Only

Not for resale without prior written consent from LifeSpan BioSciences, Inc.

Created on 9/24/2014

© 2014 LifeSpan BioSciences