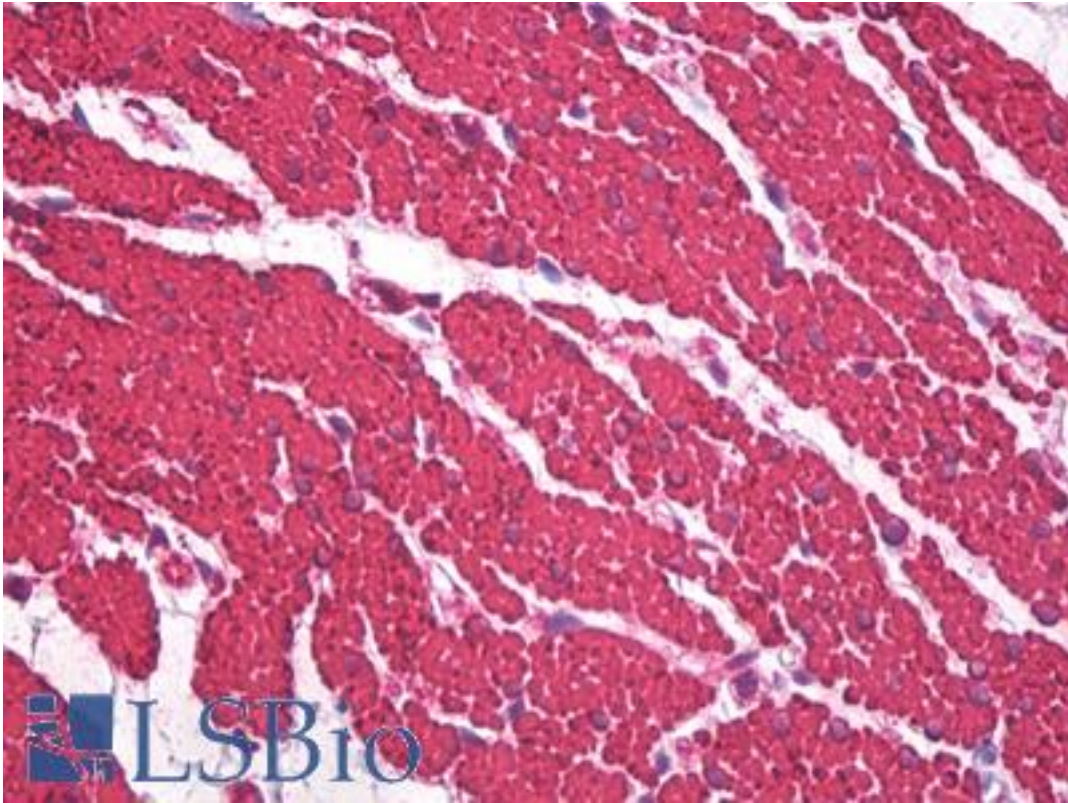


Muscle Actin Mouse anti-Human Monoclonal (HHF35) Antibody - LS-B8464 - LSBio

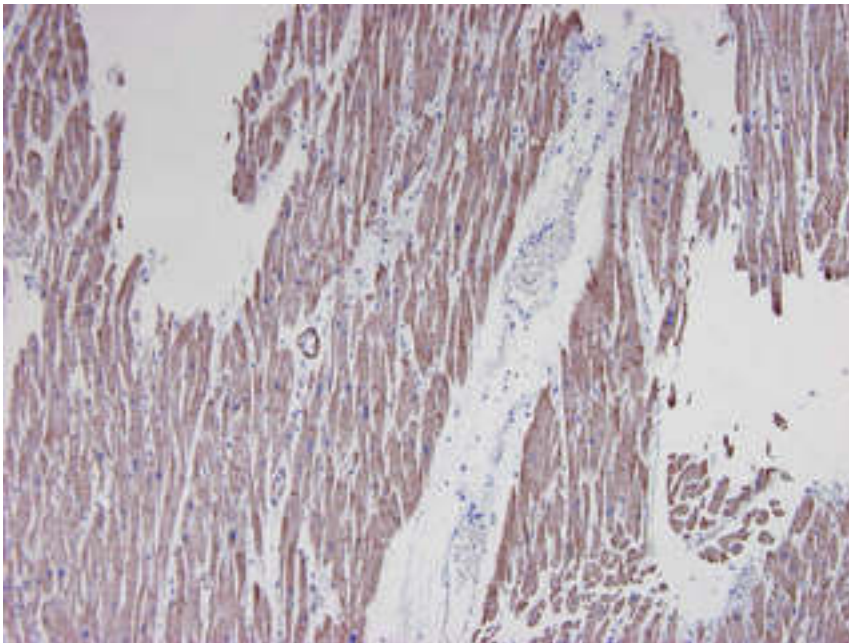
CatalogID:	LS-B8464
Validation:	This antibody replaces catalog number LS-C146644. It has been validated for use in the following assays: IHC-P.
Target:	Actin, Muscle
Host	Actin, Muscle antibody was produced in Mouse
Clonality:	Monoclonal
Isotype:	IgG1
Clone Name:	HHF35
Immunogen Species:	Muscle Actin antibody was raised against Human
Immunogen:	Muscle Actin antibody was raised against sDS-extracted protein fraction from human myocardium
Specificity:	Reacts with both alpha-muscle and gamma-smooth muscle actin, and therefore reacts with skeletal muscle, cardiac muscle, vascular and visceral smooth muscle cells, pericytes and myoepithelial cells. It is also reactive in myofibroblasts. It does not react with epithelial, endothelial, neural or normal connective tissue cells when applied under the proper conditions to these tissue sections. The epitope recognized by HHF35 is highly conserved. Therefore the antibody cross-reacts with several species including human, monkey, swine, rabbit, rat, chicken and zebrafish
Reactivity:	Human, Monkey, Rat, Pig, Rabbit, Chicken, Zebrafish
Purification:	Purified
Presentation:	PBS containing 0.09% sodium azide
Recommended Storage:	+4°C, avoid freezing
Uses:	IHC - Paraffin (5 µg/ml), IHC - Frozen (1:200 - 1:1000), Western blot (1:1000 - 1:5000), ELISA, Electron Microscopy (Optimal dilution to be determined by the researcher)
Size:	50 µg

Immunohistochemistry Image:



Human Colon, Smooth Muscle: Formalin-Fixed, Paraffin-Embedded (FFPE)

Immunohistochemistry Image:



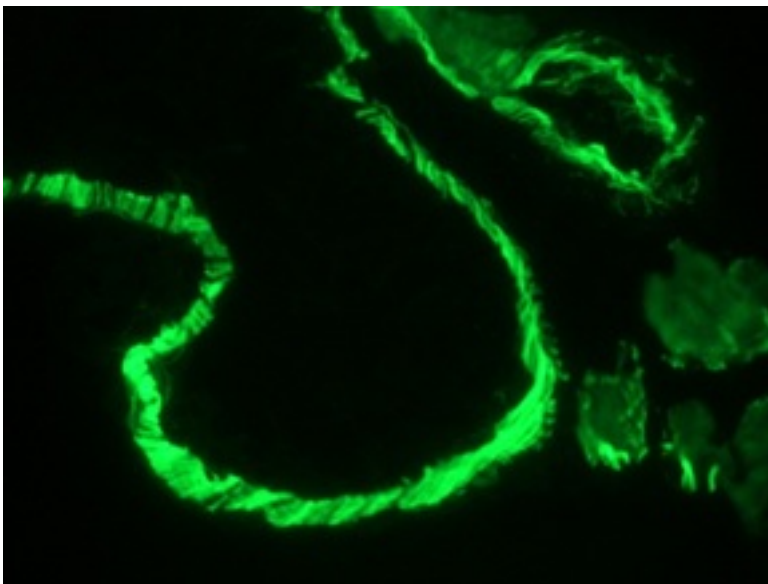
Paraffin section of human cardiac muscle immunostained with HHF35 (1:250)

Immunohistochemistry Image:



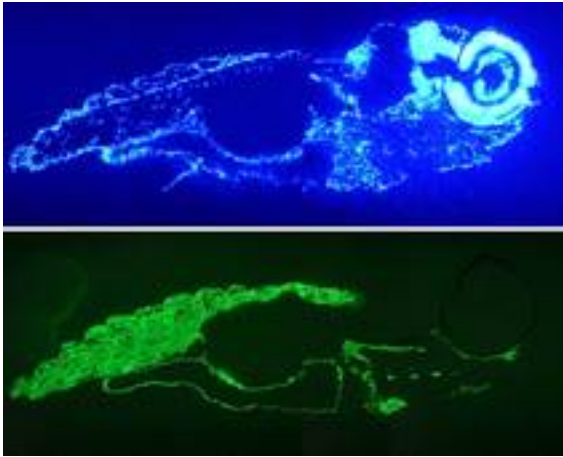
Immunofluorescence staining of muscle tissue in the tail of 3 days old zebrafish embryo

Immunohistochemistry Image:



Immunofluorescence staining of intestinal muscle tissue in 1 month old zebrafish embryo

Immunohistochemistry Image:



Immunofluorescence staining of muscle tissue of 7 days old zebrafish embryo. Note reactivity in both striated and smooth muscle tissues Upper panel: DAPI-staining of cell nuclei, providing an overview of the tissue section used for immunostaining

Requested From:

Japan

Laboratory Reagent For In Vitro Research Use Only

Not for resale without prior written consent from LifeSpan BioSciences, Inc.

Created on 9/24/2014

© 2014 LifeSpan BioSciences