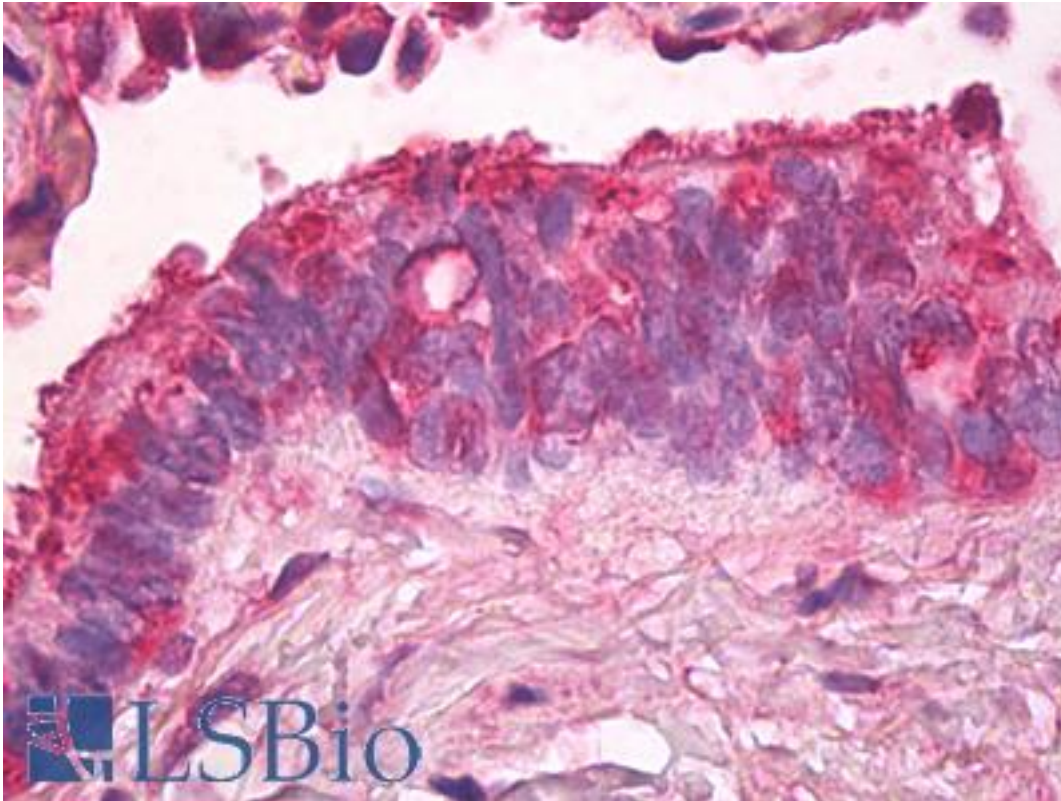


ANXA2 / Annexin A2 Rabbit anti-Human Polyclonal (N-Terminus) Antibody - LS-B8457 - LSBio

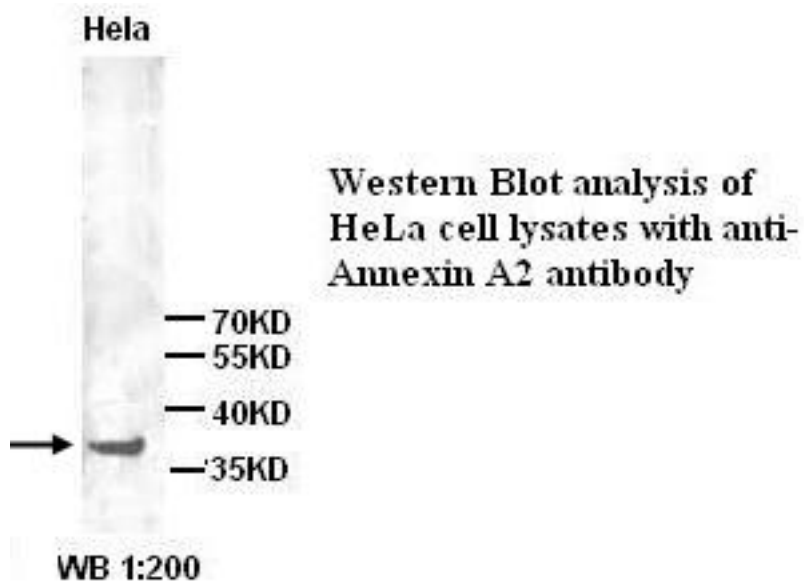
CatalogID:	LS-B8457
Validation:	This antibody replaces catalog number LS-C136978. It has been validated for use in the following assays: IHC-P.
Target:	annexin A2 (ANXA2)
Synonyms:	ANXA2 Antibody, Annexin A2 Antibody, Annexin-2 Antibody, ANX2 Antibody, Calpactin I heavy chain Antibody, Chromobindin-8 Antibody, CAL1H Antibody, Calpactin I heavy polypeptide Antibody, Chromobindin 8 Antibody, LPC2 Antibody, LIP2 Antibody, Lipocortin II Antibody, p36 Antibody, LPC2D Antibody, PAP-IV Antibody, Protein I Antibody, Annexin II Antibody, ANX2L4 Antibody, Calpactin-1 heavy chain Antibody
Family / Subfamily:	Annexin
Host	ANXA2 antibody was produced in Rabbit
Clonality:	Polyclonal
Isotype:	IgG
Immunogen Species:	ANXA2 / Annexin A2 antibody was raised against Human
Antigen Type:	Synthetic peptide
Immunogen:	ANXA2 / Annexin A2 antibody was raised against a 16 amino acid peptide from near the N terminal residues of human Annexin A2 protein
Epitope:	N-Terminus
Reactivity:	Human, Mouse, Rat
Purification:	Affinity purified
Presentation:	PBS (without Mg ²⁺ , Ca ²⁺), pH 7.4, 150 mM sodium chloride, 0.02% sodium azide, 50% glycerol
Recommended Storage:	Short term 4°C, long term aliquot and store at -20°C, avoid freeze thaw cycles.
Uses:	IHC - Paraffin (5 µg/ml), Western blot (1:100 - 1:500), ELISA (1:50 - 1:100) (Optimal dilution to be determined by the researcher)
Size:	50 µl
Concentration:	1 mg/ml

Immunohistochemistry Image:



Anti-Annexin A2 / Annexin II antibody IHC of human lung, respiratory epithelium. Immunohistochemistry of formalin-fixed, paraffin-embedded tissue after heat-induced antigen retrieval. Antibody LS-B8457 dilution 5 ug/ml.

Western Blot Image:



Requested From:

Japan

Laboratory Reagent For In Vitro Research Use Only

Not for resale without prior written consent from LifeSpan BioSciences, Inc.

Created on 9/24/2014

© 2014 LifeSpan BioSciences