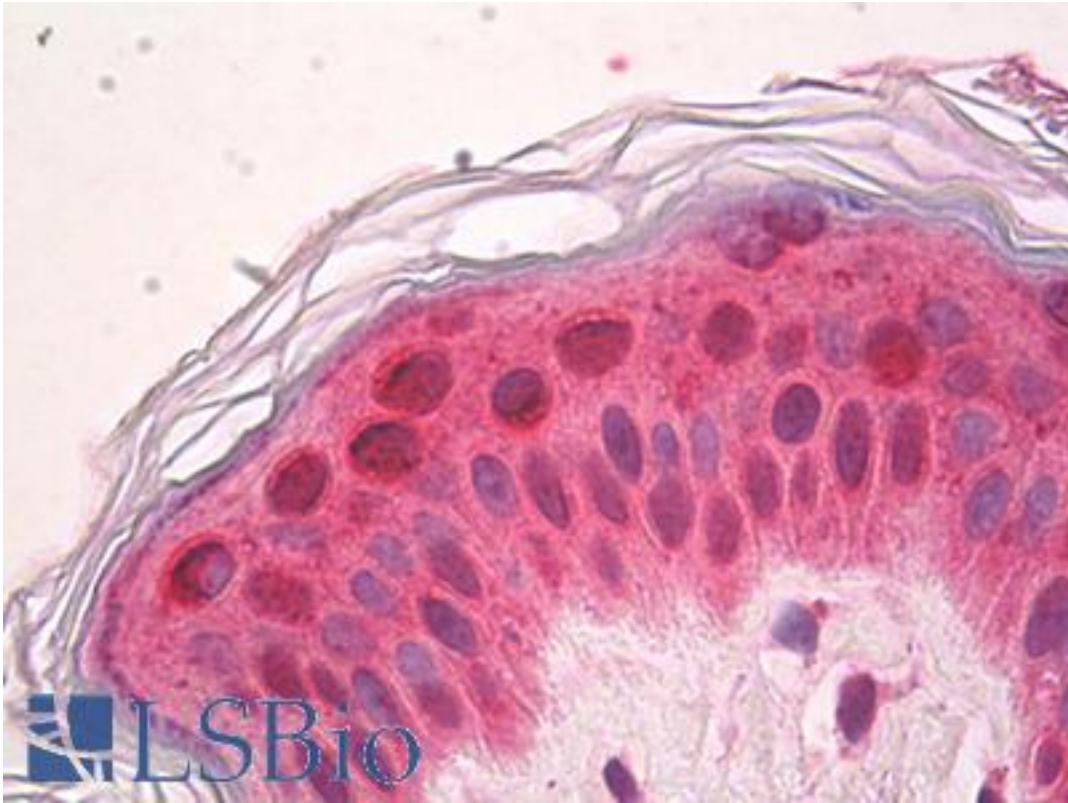


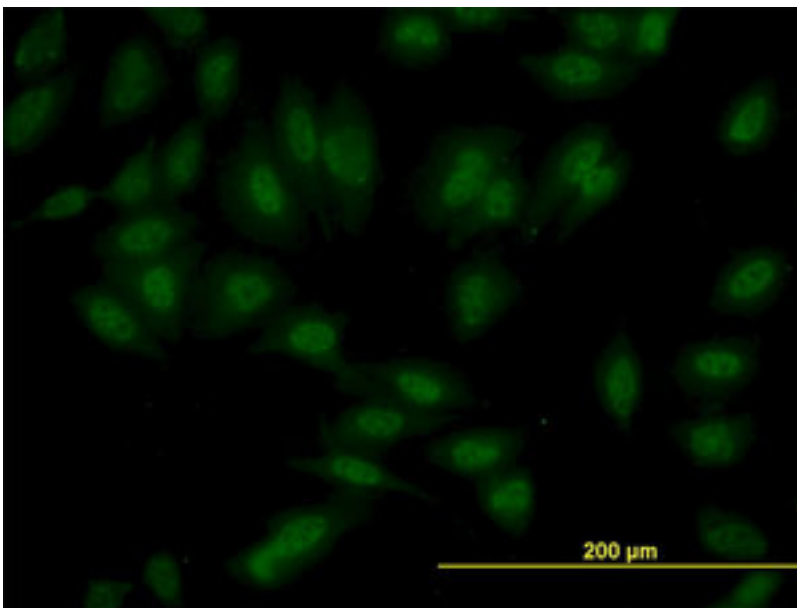
SETD7 / SET7 Mouse anti-Human Monoclonal (5B4) Antibody - LS-B8443 - LSBio	
CatalogID:	LS-B8443
Validation:	This antibody replaces catalog number LS-C134102. It has been validated for use in the following assays: IHC-P.
Target:	SET domain containing (lysine methyltransferase) 7 (SETD7)
Synonyms:	SETD7 Antibody, Lysine N-methyltransferase 7 Antibody, KIAA1717 Antibody, SET9 Antibody, H3-K4-HMTase SETD7 Antibody, KMT7 Antibody, SET7 Antibody, SET7/9 Antibody
Host	SETD7 antibody was produced in Mouse
Clonality:	Monoclonal
Isotype:	IgG2a,k
Clone Name:	5B4
Immunogen Species:	SETD7 / SET7 antibody was raised against Human
Immunogen:	SETD7 / SET7 antibody was raised against sET7 (NP_085151, 257 a.a. ~ 367 a.a) partial recombinant protein with GST tag. MW of the GST tag alone is 26 KDa.
Specificity:	Human SET7
Reactivity:	Human
Purification:	Protein A purified
Presentation:	PBS, pH 7.2
Recommended Storage:	Short term 4°C, long term aliquot and store at -20°C, avoid freeze thaw cycles.
Usage Summary:	Immunohistochemistry: Formalin-fixed paraffin-embedded sections. Western Blot: Cell lysate, Recombinant protein.
Uses:	IHC - Paraffin (5 µg/ml), Immunofluorescence (10 µg/ml), Western blot, ELISA (Optimal dilution to be determined by the researcher)
Size:	50 µg
Concentration:	1 mg/ml

Immunohistochemistry Image:



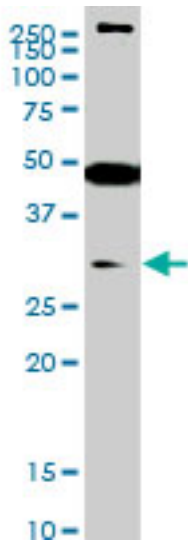
Anti-SETD7 / SET7 antibody IHC of human skin. Immunohistochemistry of formalin-fixed, paraffin-embedded tissue after heat-induced antigen retrieval. Antibody LS-B8443 dilution 5 ug/ml.

Immunofluorescence Image:



Immunofluorescence of monoclonal antibody to SET7 on HeLa cell. [antibody concentration 10 ug/ml]

Western Blot Image:



SET7 monoclonal antibody (M01), clone 5B4 Western blot of SET7 expression in Jurkat.

Requested From:

Japan

Laboratory Reagent For In Vitro Research Use Only

Not for resale without prior written consent from LifeSpan BioSciences, Inc.

Created on 9/24/2014

© 2014 LifeSpan BioSciences