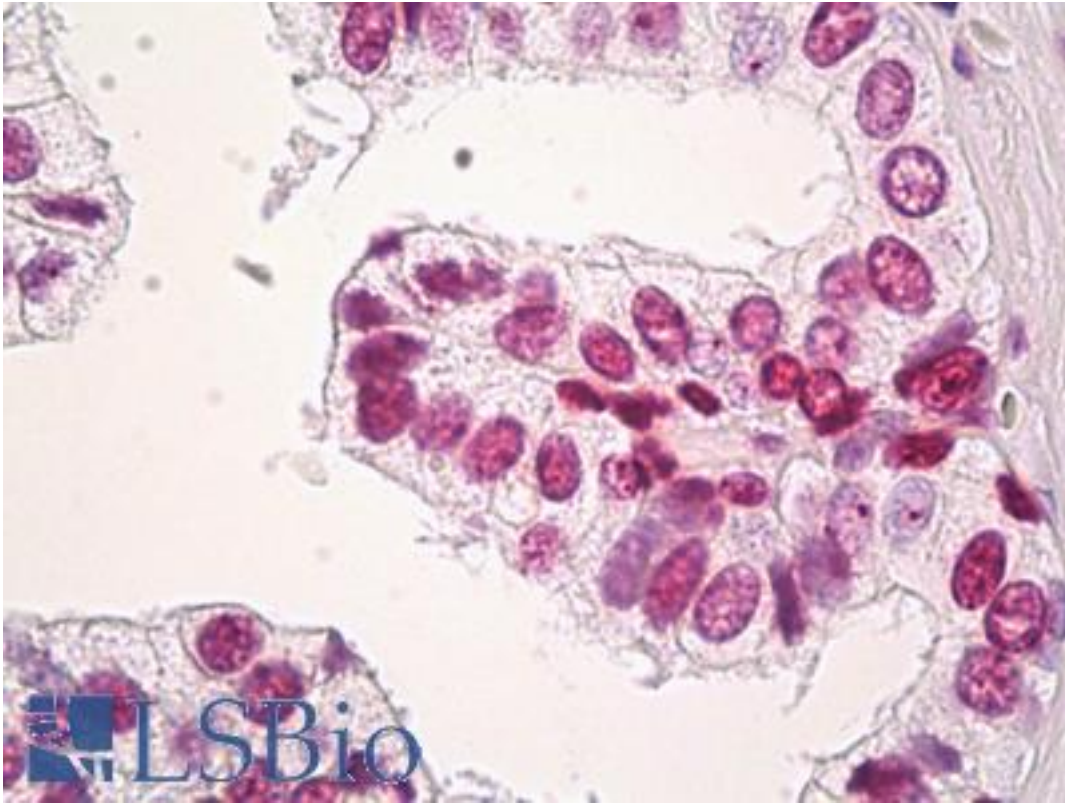


H3F3B Mouse anti-Human Monoclonal (2D7-H1) Antibody - LS-B8442 - LSBio

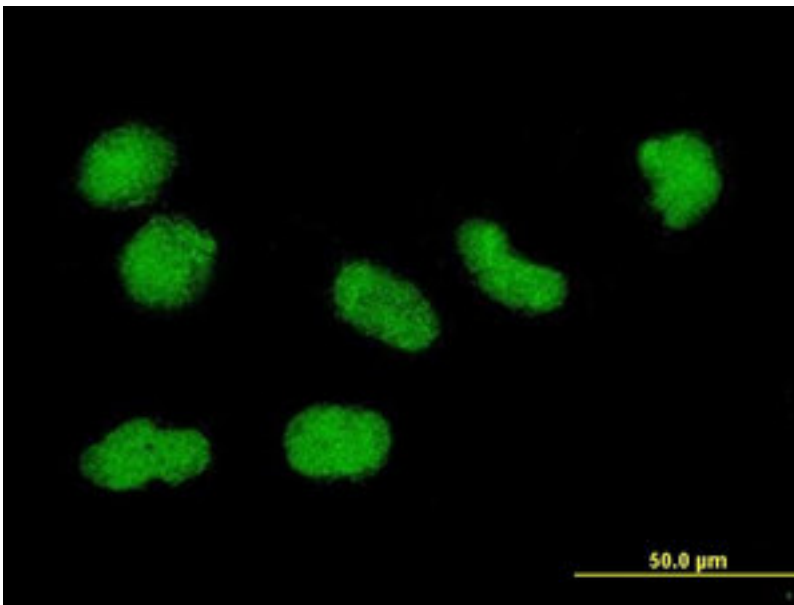
CatalogID:	LS-B8442
Validation:	This antibody replaces catalog number LS-C133228. It has been validated for use in the following assays: IHC-P.
Target:	H3 histone, family 3B (H3.3B) (H3F3B)
Synonyms:	H3F3B Antibody, H3.3B Antibody, Histone H3.3 Antibody
Host	H3F3B antibody was produced in Mouse
Clonality:	Monoclonal
Isotype:	IgG1,k
Clone Name:	2D7-H1
Immunogen Species:	H3F3B antibody was raised against Human
Immunogen:	H3F3B antibody was raised against h3F3B (AAH17558, 1 a.a. ~ 137 a.a) full length recombinant protein with GST tag. MW of the GST tag alone is 26 KDa.
Specificity:	Human H3F3B
Reactivity:	Human
Purification:	Protein A purified
Presentation:	PBS, pH 7.2
Recommended Storage:	Short term 4°C, long term aliquot and store at -20°C, avoid freeze thaw cycles.
Usage Summary:	Immunohistochemistry: Formalin-fixed paraffin-embedded sections. Western Blot: Transfected lysate, Recombinant protein.
Uses:	IHC - Paraffin (15 µg/ml), Immunofluorescence (10 µg/ml), Western blot, ELISA (Optimal dilution to be determined by the researcher)
Size:	50 µg
Concentration:	0.5 mg/ml

Immunohistochemistry Image:



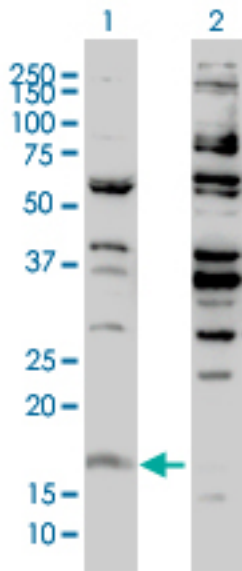
Anti-H3F3B antibody IHC of human prostate. Immunohistochemistry of formalin-fixed, paraffin-embedded tissue after heat-induced antigen retrieval. Antibody LS-B8442 dilution 15 ug/ml.

Immunofluorescence Image:



Immunofluorescence of monoclonal antibody to H3F3B on HeLa cell. [antibody concentration 10 ug/ml].

Western Blot Image:



Western blot of H3F3B expression in transfected 293T cell line by H3F3B monoclonal antibody (M01), clone 2D7-H1.

Requested From:

Japan

Laboratory Reagent For In Vitro Research Use Only

Not for resale without prior written consent from LifeSpan BioSciences, Inc.

Created on 9/24/2014

© 2014 LifeSpan BioSciences