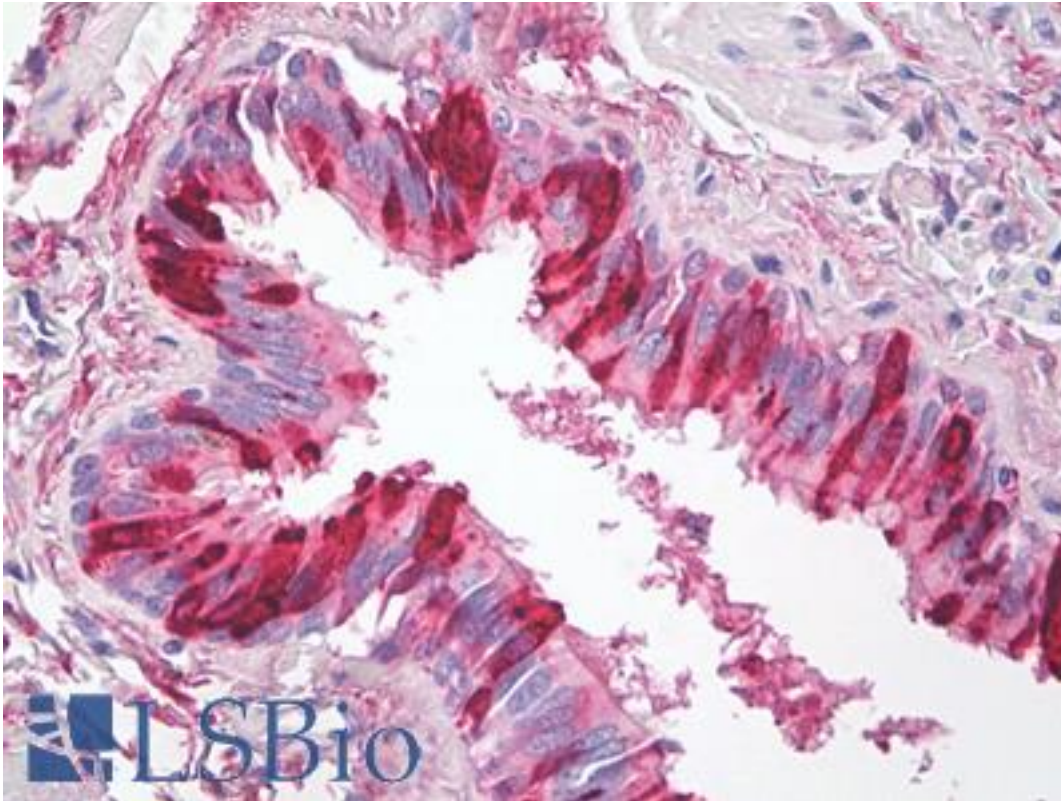


ALK1 / SLPI Mouse anti-Human Monoclonal (31) Antibody - LS-B8440 - LSBio

| | |
|-----------------------------|--|
| CatalogID: | LS-B8440 |
| Validation: | This antibody replaces catalog number LS-C10076. It has been validated for use in the following assays: IHC-P. |
| Target: | secretory leukocyte peptidase inhibitor (SLPI) |
| Synonyms: | SLPI Antibody, ALK1 Antibody, ALP Antibody, Antileukoprotease Antibody, BLPI Antibody, HUSI Antibody, Mucus proteinase inhibitor Antibody, HUSI-I Antibody, SLP1 Antibody, Antileukoproteinase Antibody, Seminal proteinase inhibitor Antibody, WFDC4 Antibody, HUSI-1 Antibody, Protease inhibitor WAP4 Antibody, WAP4 Antibody |
| Host | SLPI antibody was produced in Mouse |
| Clonality: | Monoclonal |
| Isotype: | IgG1 |
| Clone Name: | 31 |
| Immunogen Species: | ALK1 / SLPI antibody was raised against Human |
| Specificity: | Recognizes human secretory leukocyte proteinase inhibitor (SLPI; also known as antileukoprotease or ALP). |
| Reactivity: | Human |
| Purification: | Purified |
| Presentation: | PBS, 0.02% sodium azide, 0.1% BSA. |
| Recommended Storage: | Long term: -20°C; Short term: +4°C. Avoid repeat freeze-thaw cycles. |
| Usage Summary: | Suitable for use in Immunohistochemistry, Western Blot, Immunoprecipitation and ELISA. Immunohistochemistry (Frozen/paraffin): 1:25-50. Western Blot: 1:50. Immunoprecipitation: 1:50. ELISA: 1:50. |
| Uses: | IHC - Paraffin (1:25), IHC - Frozen (1:50), Western blot (1:50), Immunoprecipitation (1:50), ELISA (1:50) (Optimal dilution to be determined by the researcher) |
| Size: | 50 µg |
| Concentration: | 0.1 mg/ml |

Immunohistochemistry Image:



Anti-ALK1 / SLPI antibody IHC of human lung, respiratory epithelium. Immunohistochemistry of formalin-fixed, paraffin-embedded tissue after heat-induced antigen retrieval. Antibody LS-B8440 dilution 1:25.

Requested From:

Japan

Laboratory Reagent For In Vitro Research Use Only

Not for resale without prior written consent from LifeSpan BioSciences, Inc.

Created on 9/24/2014

© 2014 LifeSpan BioSciences