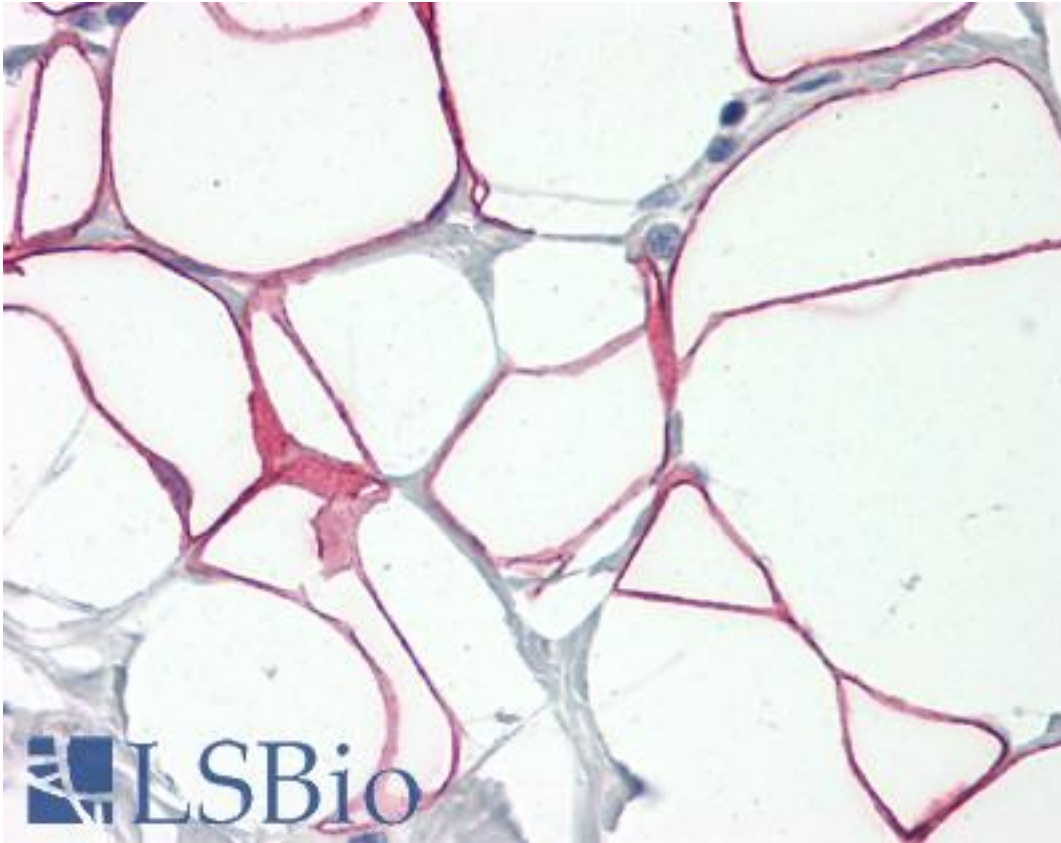


PLIN1 / Perilipin Rabbit anti-Mouse Polyclonal Antibody - LS-B8438 - LSBio

CatalogID:	LS-B8438
Validation:	This antibody replaces catalog number LS-C147060. It has been validated for use in the following assays: IHC-P.
Target:	perilipin 1 (PLIN1)
Synonyms:	PLIN1 Antibody, FPLD4 Antibody, PERI Antibody, Perilipin-1 Antibody, PLIN Antibody, Perilipin Antibody, Perilipin 1 Antibody
Host	PLIN1 antibody was produced in Rabbit
Clonality:	Polyclonal
Immunogen Species:	PLIN1 / Perilipin antibody was raised against Mouse
Antigen Type:	Synthetic peptide
Immunogen:	PLIN1 / Perilipin antibody was raised against synthetic peptide surrounding amino acid 510 of mouse Perilipin A
Specificity:	Mouse PLIN1 / Perilipin
Reactivity:	Mouse, Human, Rat
Purification:	Affinity purified
Presentation:	PBS pH 7.2, containing 30% glycerol, 0.5% BSA, 5 mM EDTA and 0.01% thimerosal.
Recommended Storage:	Store at -20°C.
Uses:	IHC - Paraffin (5 µg/ml), Western blot (1 - 4 µg/ml) (Optimal dilution to be determined by the researcher)
Size:	100 µg
Concentration:	0.5 mg/ml

Immunohistochemistry Image:



Anti-Perilipin antibody IHC of human adipocytes. Immunohistochemistry of formalin-fixed, paraffin-embedded tissue after heat-induced antigen retrieval. Antibody LS-B8438 dilution 5 ug/ml.

Requested From:

Japan

Laboratory Reagent For In Vitro Research Use Only

Not for resale without prior written consent from LifeSpan BioSciences, Inc.

Created on 9/24/2014

© 2014 LifeSpan BioSciences