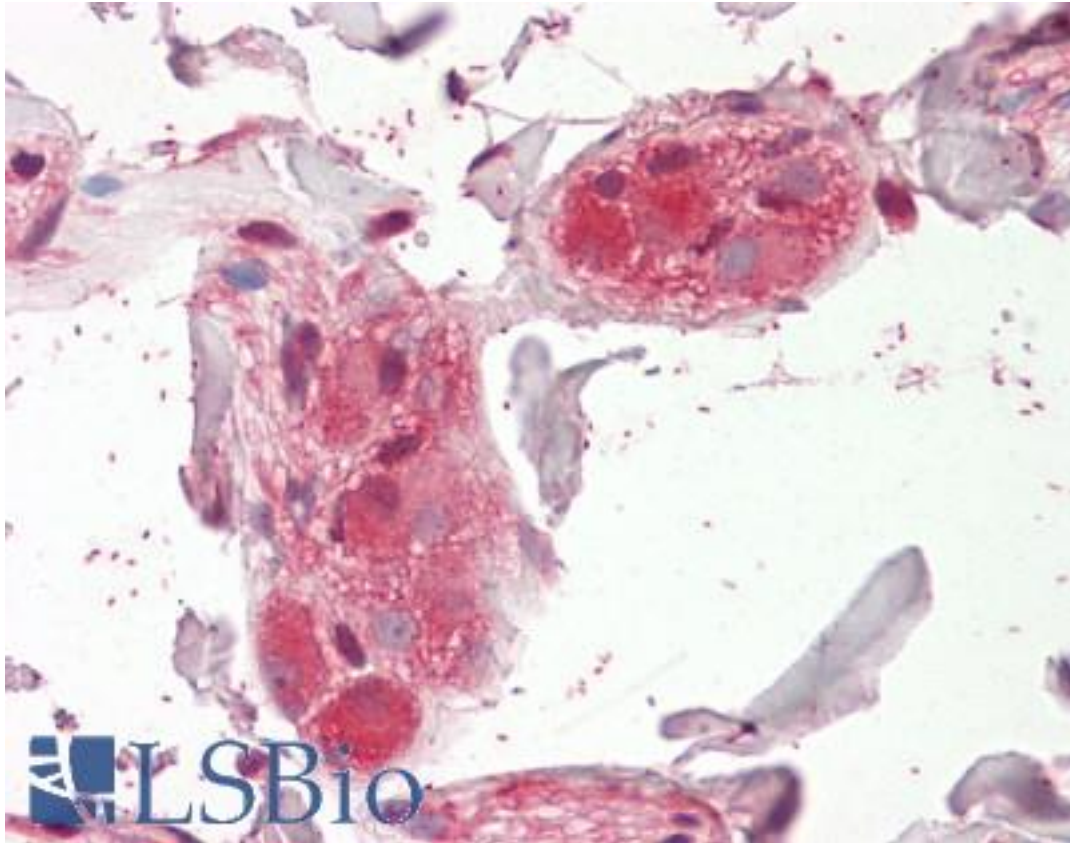


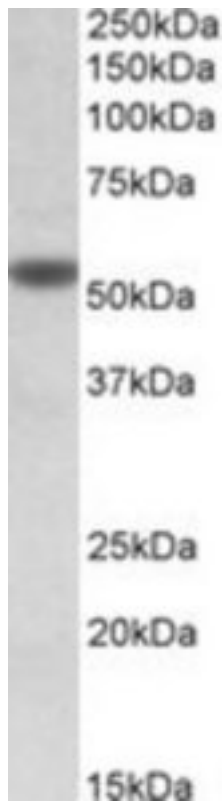
CHRNA5 Goat anti-Human Polyclonal (Internal) Antibody - LS-B8364 - LSBio	
<b>CatalogID:</b>	LS-B8364
<b>Validation:</b>	This antibody replaces catalog number LS-C139813. It has been validated for use in the following assays: IHC-P.
<b>Target:</b>	cholinergic receptor, nicotinic, alpha 5 (neuronal) (CHRNA5)
<b>Synonyms:</b>	CHRNA5 Antibody, Acra-5 Antibody, AChR-alpha5 Antibody, LNCR2 Antibody, NACHR alpha 5 Antibody, NACHRA5 Antibody
<b>Family / Subfamily:</b>	Ion Channel / Nicotinic acetylcholine receptor
<b>Host</b>	CHRNA5 antibody was produced in Goat
<b>Clonality:</b>	Polyclonal
<b>Immunogen Species:</b>	CHRNA5 antibody was raised against Human
<b>Antigen Type:</b>	Synthetic peptide
<b>Immunogen:</b>	CHRNA5 antibody was raised against synthetic peptide C-HVDRYFTQKEET from an internal region of human CHRNA5 (NP_000736.2). Percent identity by BLAST analysis: Human, Chimpanzee, Gorilla, Gibbon, Monkey, Elephant (100%); Hamster, Horse, Pig (92%); Marmoset, Bovine, Turkey, Chicken, Xenopus (83%).
<b>Specificity:</b>	Human CHRNA5.
<b>Epitope:</b>	Internal
<b>Reactivity:</b>	Human, Chimpanzee, Gorilla, Gibbon, Monkey
<b>Predicted Reactivity:</b>	Hamster, Horse, Pig
<b>Purification:</b>	Immunoaffinity purified
<b>Presentation:</b>	Tris-buffered saline, pH 7.3, 0.5% BSA, 0.02% sodium azide
<b>Recommended Storage:</b>	Store at -20°C. Minimize freezing and thawing.
<b>Usage Summary:</b>	Peptide ELISA: antibody detection limit dilution 1:32000. Western blot: Approx 55kD band observed in lysates of cell line KELLY (calculated MW of 53.1kD according to NP_000736.2). Recommended concentration: 1-3 ug/ml.
<b>Uses:</b>	IHC - Paraffin (3.75 µg/ml), Western blot (1 - 3 µg/ml), ELISA (1:32000) (Optimal dilution to be determined by the researcher)
<b>Size:</b>	50 µg
<b>Concentration:</b>	0.5 mg/ml

**Immunohistochemistry Image:**



Anti-CHRNA5 antibody IHC of human colon, submucosal plexus. Immunohistochemistry of formalin-fixed, paraffin-embedded tissue after heat-induced antigen retrieval. Antibody LS-B8364 dilution 3.75 ug/ml.

**Western Blot Image:**



CHRNA5 antibody (1 ug/ml) staining of KELLY lysate (35 ug protein/ml in RIPA buffer). Primary incubation was 1 hour. Detected by chemiluminescence.

**Requested From:**

Japan

Laboratory Reagent For In Vitro Research Use Only

Not for resale without prior written consent from LifeSpan BioSciences, Inc.

Created on 9/24/2014

© 2014 LifeSpan BioSciences