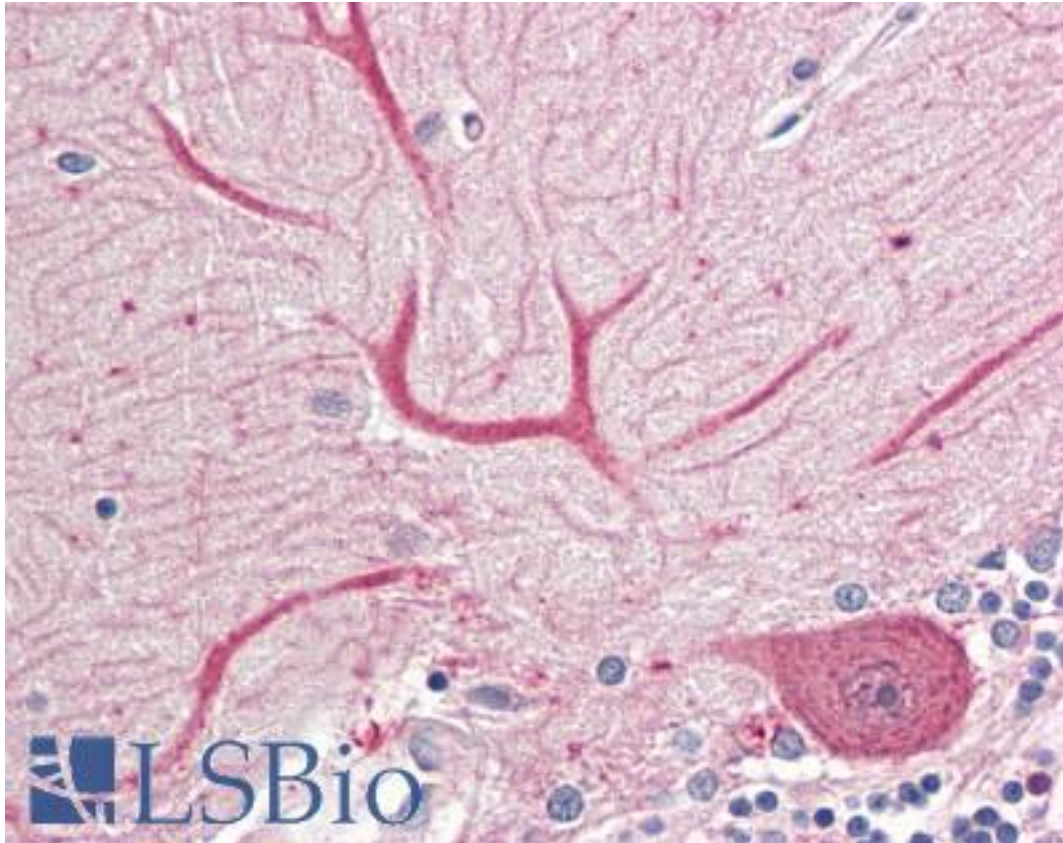


KEAP1 Goat anti-Human Polyclonal (N-Terminus) Antibody - LS-B8363 - LSBio

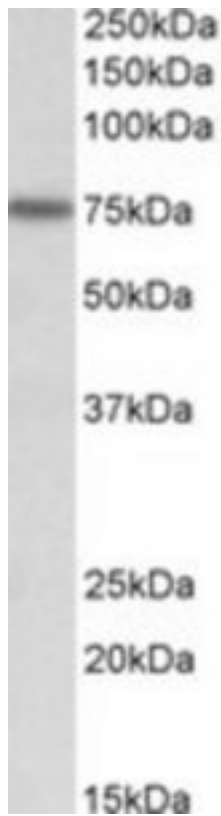
CatalogID:	LS-B8363
Validation:	This antibody replaces catalog number LS-C139815. It has been validated for use in the following assays: IHC-P.
Target:	kelch-like ECH-associated protein 1 (KEAP1)
Synonyms:	KEAP1 Antibody, Cytosolic inhibitor of Nrf2 Antibody, INrf2 Antibody, KLHL19 Antibody, Kelch-like protein 19 Antibody, KIAA0132 Antibody
Host	KEAP1 antibody was produced in Goat
Clonality:	Polyclonal
Immunogen Species:	KEAP1 antibody was raised against Human
Antigen Type:	Synthetic peptide
Immunogen:	KEAP1 antibody was raised against synthetic peptide C-EVTPSQHGNRTFS from an internal region (near N-terminus) of human KEAP1 (NP_036421.2). Percent identity by BLAST analysis: Human, Gorilla, Orangutan, Gibbon, Monkey, Marmoset, Elephant, Panda, Dog, Bat, Bovine, Horse, Pig, Opossum (100%); Mouse, Rat, Hamster (92%); Lizard (85%).
Specificity:	Human KEAP1. Reported variants represent identical protein: NP_036421.2, NP_987096.1
Epitope:	N-Terminus
Reactivity:	Human, Gorilla, Orangutan, Gibbon, Monkey, Bat, Bovine, Dog, Horse, Pig
Predicted Reactivity:	Mouse, Rat, Hamster
Purification:	Immunoaffinity purified
Presentation:	Tris-buffered saline, pH 7.3, 0.5% BSA, 0.02% sodium azide
Recommended Storage:	Store at -20°C. Minimize freezing and thawing.
Usage Summary:	Peptide ELISA: antibody detection limit dilution 1:32000. Western blot: Approx 75kD band observed in lysates of cell lines HeLa and NIH3T3 (calculated MW of 69.7kD according to Human NP_036421.2 and of 69.6kD according to Mouse NP_057888.1). Recommended concentration: 0.2-0.6 ug/ml.
Uses:	IHC - Paraffin (3.75 µg/ml), Western blot (0.2 - 0.6 µg/ml), ELISA (1:32000) (Optimal dilution to be determined by the researcher)
Size:	50 µg
Concentration:	0.5 mg/ml

Immunohistochemistry Image:



Anti-KEAP1 antibody IHC of human brain, cerebellum. Immunohistochemistry of formalin-fixed, paraffin-embedded tissue after heat-induced antigen retrieval. Antibody LS-B8363 dilution 3.75 ug/ml.

Western Blot Image:



KEAP1 antibody (0.2 ug/ml) staining of NIH3T3 lysate (35 ug protein/ml in RIPA buffer). Primary incubation was 1 hour. Detected by chemiluminescence.

Requested From:

Japan

Laboratory Reagent For In Vitro Research Use Only

Not for resale without prior written consent from LifeSpan BioSciences, Inc.

Created on 9/24/2014

© 2014 LifeSpan BioSciences