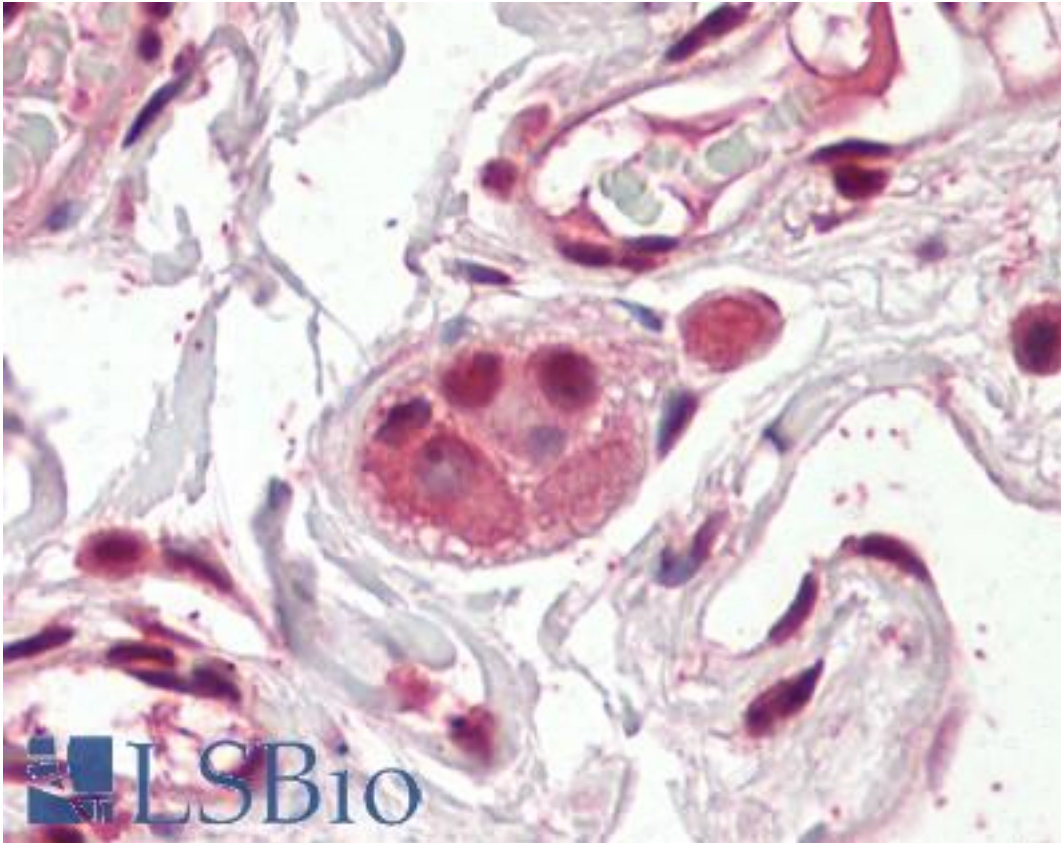


AES / Groucho Goat anti-Human Polyclonal (N-Terminus) Antibody - LS-B8362 - LSBio	
CatalogID:	LS-B8362
Validation:	This antibody replaces catalog number LS-C139790. It has been validated for use in the following assays: IHC-P.
Target:	amino-terminal enhancer of split (AES)
Synonyms:	AES Antibody, AES-1 Antibody, AES-2 Antibody, Amino enhancer of split Antibody, ESP1 Antibody, Groucho Antibody, GRG Antibody, Protein ESP1 Antibody, TLE5 Antibody, Protein GRG Antibody, gp130-associated protein GAM Antibody, GRG5 Antibody
Family / Subfamily:	Transcription factor
Host	AES antibody was produced in Goat
Clonality:	Polyclonal
Immunogen Species:	AES / Groucho antibody was raised against Human
Antigen Type:	Synthetic peptide
Immunogen:	AES / Groucho antibody was raised against synthetic peptide SHLPQQLKFTTSD-C from the N-terminus of human AES / GRG / Groucho (NP_945320.1; NP_001121.2; NP_945321.1). Percent identity by BLAST analysis: Human, Gorilla, Mouse, Rat, Hamster, Elephant, Dog, Bovine, Opossum, Xenopus, Frog (100%).
Specificity:	Human AES / GRG / Groucho. This antibody is expected to recognize all reported isoforms (NP_945320.1; NP_001121.2; NP_945321.1).
Epitope:	N-Terminus
Reactivity:	Human, Gorilla, Mouse, Rat, Bovine, Dog, Hamster, Xenopus
Purification:	Immunoaffinity purified
Presentation:	Tris-buffered saline, pH 7.3, 0.5% BSA, 0.02% sodium azide
Recommended Storage:	Store at -20°C. Minimize freezing and thawing.
Usage Summary:	Peptide ELISA: antibody detection limit dilution 1:64000. Western blot: Approx 30kD band observed in Human Brain (Cerebellum and Cerebral Cortex) lysates (calculated MW of 29.1kD according to NP_945320.1). Recommended concentration: 0.3-1 ug/ml.
Uses:	IHC - Paraffin (3.75 µg/ml), Western blot (0.3 - 1 µg/ml), ELISA (1:64000) (Optimal dilution to be determined by the researcher)
Size:	50 µg
Concentration:	0.5 mg/ml

Immunohistochemistry Image:



Anti-Groucho antibody IHC of human colon, submucosal plexus. Immunohistochemistry of formalin-fixed, paraffin-embedded tissue after heat-induced antigen retrieval. Antibody LS-B8362 dilution 3.75 ug/ml.

Western Blot Image:



AES antibody (0.3 ug/ml) staining of Human Cerebral Cortex lysate (35 ug protein/ml in RIPA buffer). Primary incubation was 1 hour. Detected by chemiluminescence.

Requested From:

Japan

Laboratory Reagent For In Vitro Research Use Only

Not for resale without prior written consent from LifeSpan BioSciences, Inc.

Created on 9/24/2014

© 2014 LifeSpan BioSciences