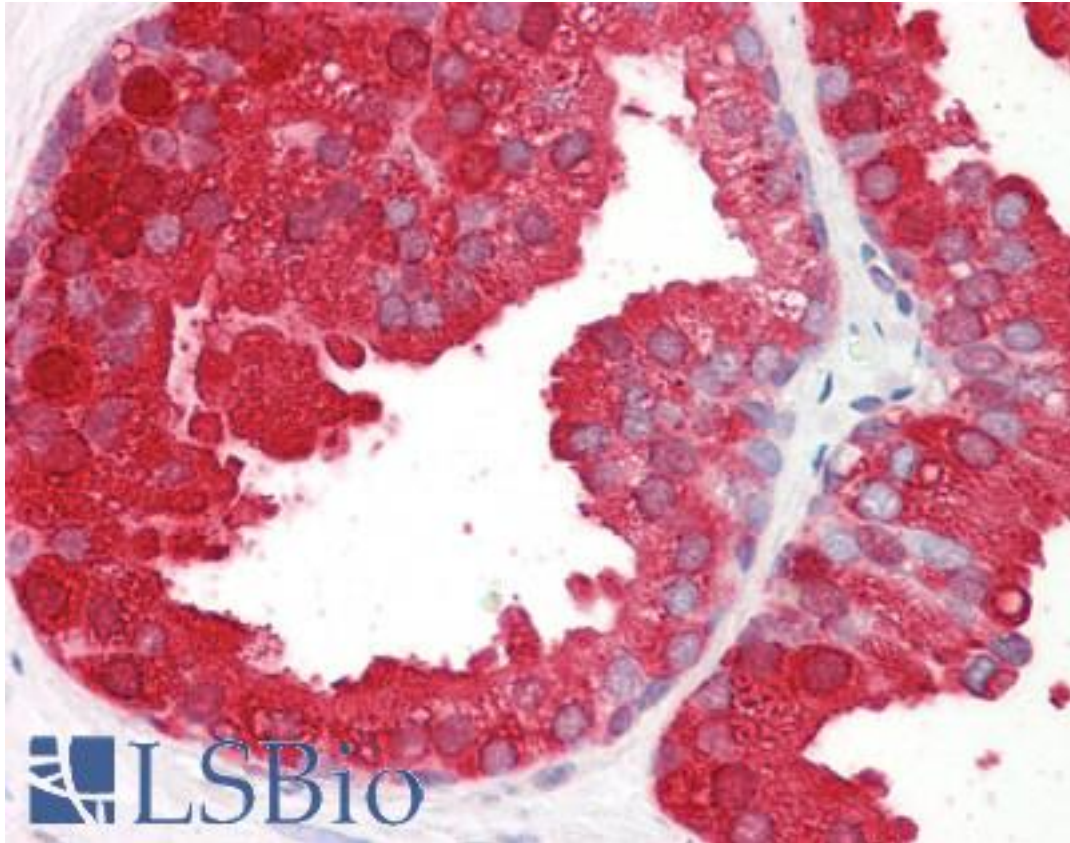


ACPP / PAP Goat anti-Human Polyclonal (Internal) Antibody - LS-B8361 - LSBio

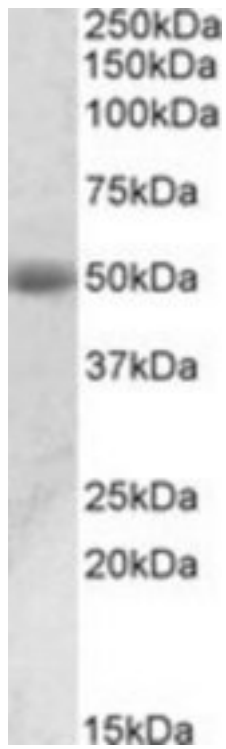
CatalogID:	LS-B8361
Validation:	This antibody replaces catalog number LS-C139821. It has been validated for use in the following assays: IHC-P.
Target:	acid phosphatase, prostate (ACPP)
Synonyms:	ACPP Antibody, ACP3 Antibody, 5-NT Antibody, 5-nucleotidase Antibody, Acid phosphatase, prostate Antibody, ACP-3 Antibody, Ecto-5-nucleotidase Antibody, PAP Antibody, Prostatic acid phosphatase Antibody, Thiamine monophosphatase Antibody, Prostatic acid phosphotase Antibody, TMPase Antibody
Host	ACPP antibody was produced in Goat
Clonality:	Polyclonal
Immunogen Species:	ACPP / PAP antibody was raised against Human
Antigen Type:	Synthetic peptide
Immunogen:	ACPP / PAP antibody was raised against synthetic peptide C-NHMKRATQIPSYKK from an internal region of human ACPP (NP_001127666.1; NP_001090.2). Percent identity by BLAST analysis: Human, Gorilla, Baboon, Monkey (100%); Chimpanzee (93%); Orangutan, Gibbon (86%).
Specificity:	Human ACPP. This antibody is expected to recognize both reported isoforms (NP_001127666.1; NP_001090.2).
Epitope:	Internal
Reactivity:	Human, Gorilla, Monkey
Predicted Reactivity:	Chimpanzee
Purification:	Immunoaffinity purified
Presentation:	Tris-buffered saline, pH 7.3, 0.5% BSA, 0.02% sodium azide
Recommended Storage:	Store at -20°C. Minimize freezing and thawing.
Usage Summary:	Peptide ELISA: antibody detection limit dilution 1:32000. Western blot: Approx 50kD band observed in Human Prostate lysates (calculated MW of 48.3kD according to NP_001127666.1). Recommended concentration: 0.01-0.03 ug/ml.
Uses:	IHC - Paraffin (3.75 µg/ml), Western blot (0.01 - 0.03 µg/ml), ELISA (1:32000) (Optimal dilution to be determined by the researcher)
Size:	50 µg
Concentration:	0.5 mg/ml

Immunohistochemistry Image:



Anti-ACPP antibody IHC of human prostate. Immunohistochemistry of formalin-fixed, paraffin-embedded tissue after heat-induced antigen retrieval. Antibody LS-B8361 dilution 3.75 ug/ml.

Western Blot Image:



ACPP antibody (0.01 ug/ml) staining of Human Prostate lysate (35 ug protein/ml in RIPA buffer). Primary incubation was 1 hour. Detected by chemiluminescence.

Requested From:

Japan

Laboratory Reagent For In Vitro Research Use Only

Not for resale without prior written consent from LifeSpan BioSciences, Inc.

Created on 9/24/2014

© 2014 LifeSpan BioSciences