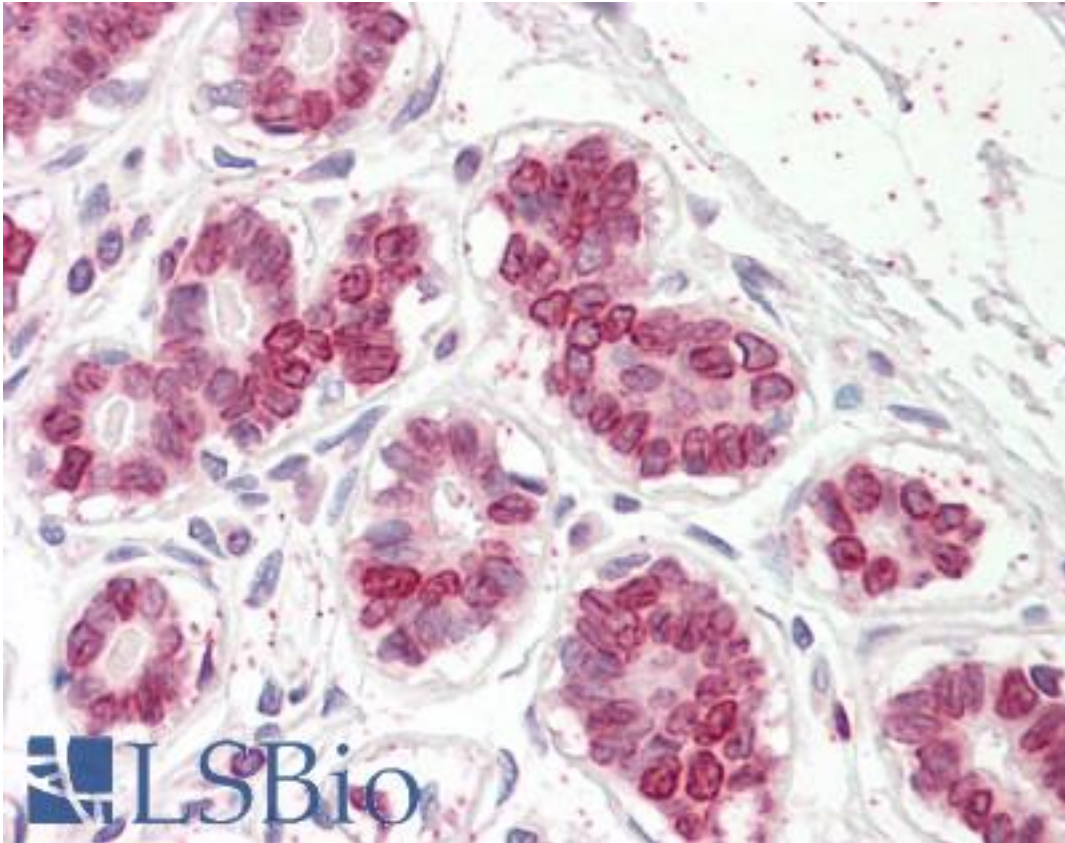


UBASH3A / CLIP4 Goat anti-Human Polyclonal (Internal) Antibody - LS-B8359 - LSBio

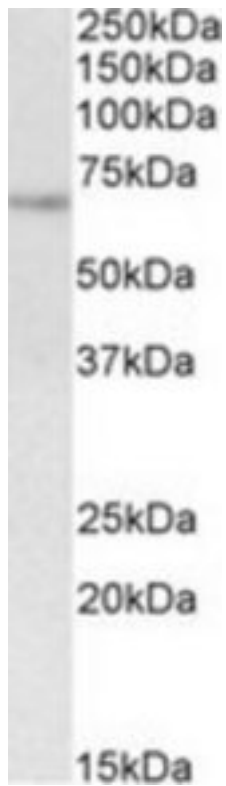
CatalogID:	LS-B8359
Validation:	This antibody replaces catalog number LS-C139778. It has been validated for use in the following assays: IHC-P.
Target:	ubiquitin associated and SH3 domain containing A (UBASH3A)
Synonyms:	UBASH3A Antibody, STS2 Antibody, TULA-1 Antibody, STS-2 Antibody, T-cell ubiquitin ligand 1 Antibody, TULA Antibody, Cbl-interacting protein 4 Antibody
Host	UBASH3A antibody was produced in Goat
Clonality:	Polyclonal
Immunogen Species:	UBASH3A / CLIP4 antibody was raised against Human
Antigen Type:	Synthetic peptide
Immunogen:	UBASH3A / CLIP4 antibody was raised against synthetic peptide C-DSGIRISSVFASP from an internal region of human UBASH3A (NP_061834.1; NP_001001895.1). Percent identity by BLAST analysis: Human, Gorilla, Gibbon, Monkey (100%); Bat, Horse (92%); Bovine (85%).
Specificity:	Human UBASH3A. This antibody is expected to recognize both reported isoforms (NP_061834.1; NP_001001895.1).
Epitope:	Internal
Reactivity:	Human, Gorilla, Gibbon, Monkey
Predicted Reactivity:	Bat, Horse
Purification:	Immunoaffinity purified
Presentation:	Tris-buffered saline, pH 7.3, 0.5% BSA, 0.02% sodium azide
Recommended Storage:	Store at -20°C. Minimize freezing and thawing.
Usage Summary:	Peptide ELISA: antibody detection limit dilution 1:8000. Western blot: Approx 70kD band observed in Human Spleen lysates (calculated MW of 69.8kD according to NP_001001895.1). Recommended concentration: 1-3 ug/ml.
Uses:	IHC - Paraffin (3.75 µg/ml), Western blot (1 - 3 µg/ml), ELISA (1:8000) (Optimal dilution to be determined by the researcher)
Size:	50 µg
Concentration:	0.5 mg/ml

Immunohistochemistry Image:



Anti-UBASH3A antibody IHC of human breast. Immunohistochemistry of formalin-fixed, paraffin-embedded tissue after heat-induced antigen retrieval. Antibody LS-B8359 dilution 3.75 ug/ml.

Western Blot Image:



UBASH3A antibody (1 ug/ml) staining of Human Spleen lysate (35 ug protein/ml in RIPA buffer). Primary incubation was 1 hour. Detected by chemiluminescence.

Requested From:

Japan

Laboratory Reagent For In Vitro Research Use Only

Not for resale without prior written consent from LifeSpan BioSciences, Inc.

Created on 9/24/2014

© 2014 LifeSpan BioSciences