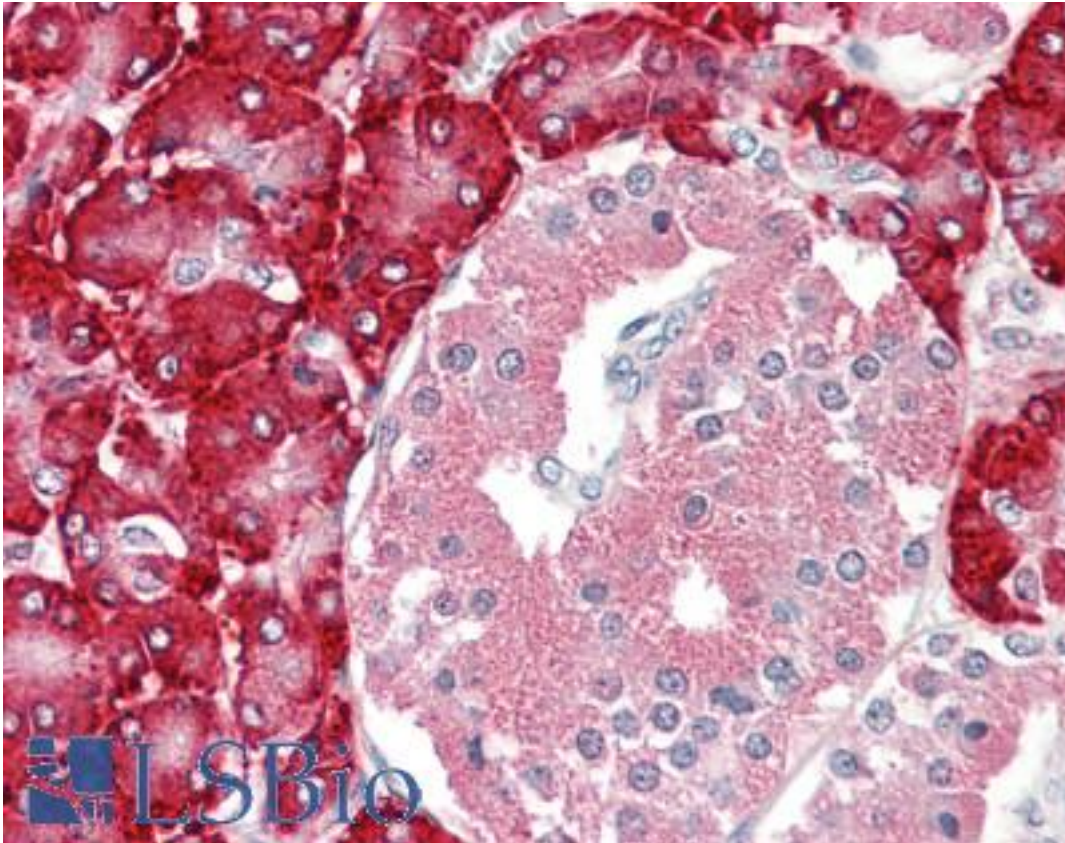


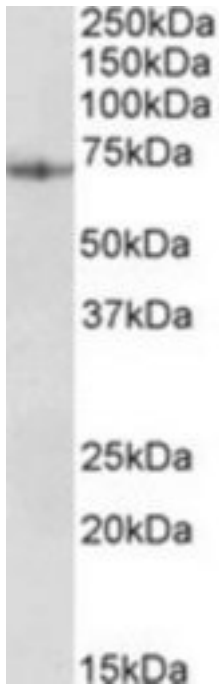
PDIA2 Goat anti-Human Polyclonal (Internal) Antibody - LS-B8358 - LSBio	
<b>CatalogID:</b>	LS-B8358
<b>Validation:</b>	This antibody replaces catalog number LS-C139776. It has been validated for use in the following assays: IHC-P.
<b>Target:</b>	protein disulfide isomerase family A, member 2 (PDIA2)
<b>Synonyms:</b>	PDIA2 Antibody, PDA2 Antibody, PDIR Antibody, PDIP Antibody, Protein disulfide isomerase A2 Antibody, Protein disulfide-isomerase A2 Antibody, PDI Antibody
<b>Host</b>	PDIA2 antibody was produced in Goat
<b>Clonality:</b>	Polyclonal
<b>Immunogen Species:</b>	PDIA2 antibody was raised against Human
<b>Antigen Type:</b>	Synthetic peptide
<b>Immunogen:</b>	PDIA2 antibody was raised against synthetic peptide C-THPEEYTGPRDAE from an internal region of human PDIA2 (NP_006840.2). Percent identity by BLAST analysis: Human, Gorilla (100%); Orangutan, Gibbon, Baboon, Monkey, Marmoset, Bovine (92%); Panda, Bat, Horse (85%).
<b>Specificity:</b>	Human PDIA2.
<b>Epitope:</b>	Internal
<b>Reactivity:</b>	Human, Gorilla
<b>Predicted Reactivity:</b>	Orangutan, Gibbon, Monkey, Bovine
<b>Purification:</b>	Immunoaffinity purified
<b>Presentation:</b>	Tris-buffered saline, pH 7.3, 0.5% BSA, 0.02% sodium azide
<b>Recommended Storage:</b>	Store at -20°C. Minimize freezing and thawing.
<b>Usage Summary:</b>	Peptide ELISA: antibody detection limit dilution 1:16000. Western blot: Approx 70kD band observed in Human Pancreas lysates (calculated MW of 58.2kD according to NP_006840.2). The observed molecular weight corresponds to the glycosylated form. Recommended concentration: 0.03-0.1 ug/ml.
<b>Uses:</b>	IHC - Paraffin (3.75 µg/ml), Western blot (0.03 - 0.1 µg/ml), ELISA (1:16000) (Optimal dilution to be determined by the researcher)
<b>Size:</b>	50 µg
<b>Concentration:</b>	0.5 mg/ml

**Immunohistochemistry Image:**



Anti-PDIA2 antibody IHC of human pancreas. Immunohistochemistry of formalin-fixed, paraffin-embedded tissue after heat-induced antigen retrieval. Antibody LS-B8358 dilution 3.75 ug/ml.

**Western Blot Image:**



PDIA2 antibody (0.03 ug/ml) staining of Human Pancreas lysate (35 ug protein/ml in RIPA buffer). Primary incubation was 1 hour. Detected by chemiluminescence.

**Requested From:**

Japan

Laboratory Reagent For In Vitro Research Use Only

Not for resale without prior written consent from LifeSpan BioSciences, Inc.

Created on 9/24/2014

© 2014 LifeSpan BioSciences