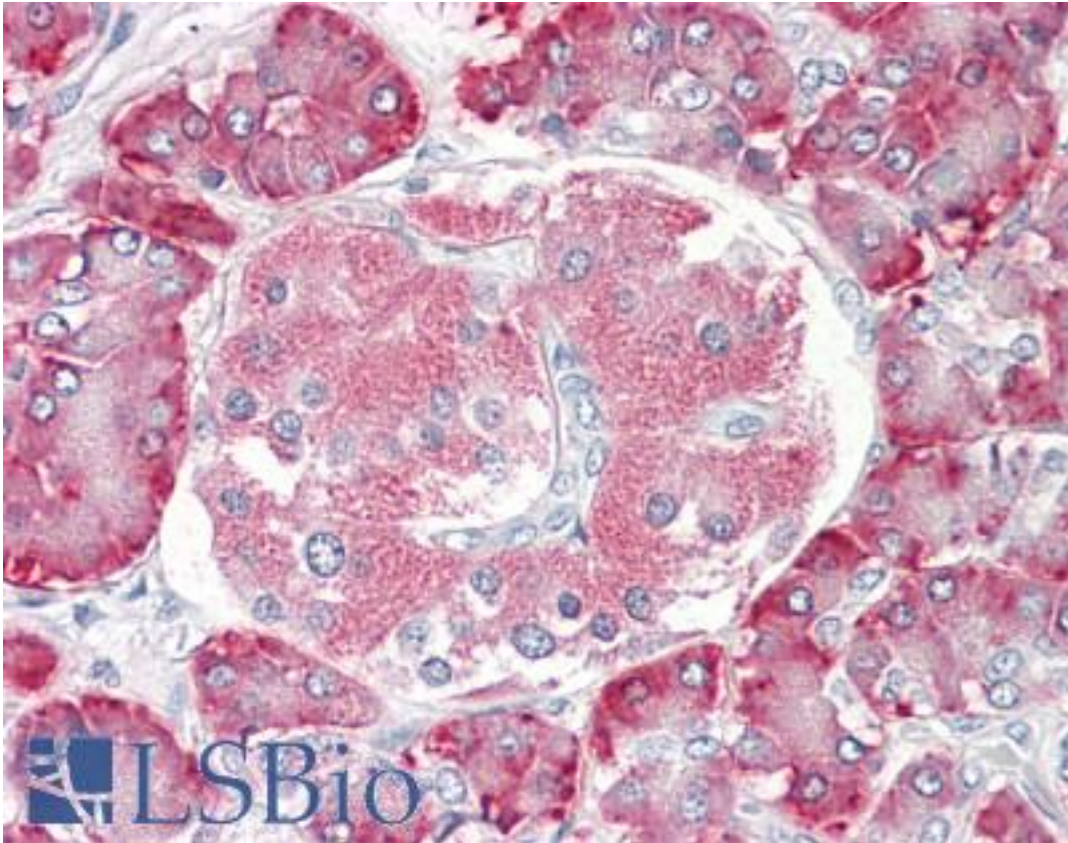


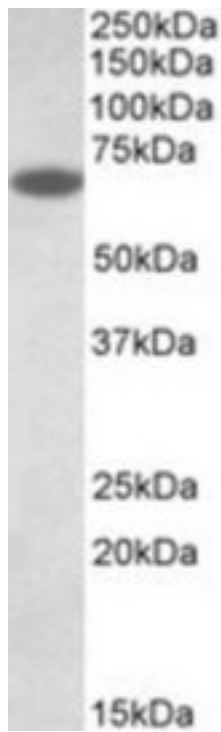
PDIA2 Goat anti-Human Polyclonal (C-Terminus) Antibody - LS-B8357 - LSBio	
<b>CatalogID:</b>	LS-B8357
<b>Validation:</b>	This antibody replaces catalog number LS-C139793. It has been validated for use in the following assays: IHC-P.
<b>Target:</b>	protein disulfide isomerase family A, member 2 (PDIA2)
<b>Synonyms:</b>	PDIA2 Antibody, PDA2 Antibody, PDIR Antibody, PDIP Antibody, Protein disulfide isomerase A2 Antibody, Protein disulfide-isomerase A2 Antibody, PDI Antibody
<b>Host</b>	PDIA2 antibody was produced in Goat
<b>Clonality:</b>	Polyclonal
<b>Immunogen Species:</b>	PDIA2 antibody was raised against Human
<b>Antigen Type:</b>	Synthetic peptide
<b>Immunogen:</b>	PDIA2 antibody was raised against synthetic peptide C-EYKSTRDLETFSK from an internal region (near C-terminus) of human PDIA2 (NP_006840.2). Percent identity by BLAST analysis: Human, Gorilla, Shrew, Hamster (100%); Orangutan, Gibbon, Baboon, Monkey, Marmoset, Mouse, Panda, Dog, Bat, Pig, Opossum (92%).
<b>Specificity:</b>	Human PDIA2.
<b>Epitope:</b>	C-Terminus
<b>Reactivity:</b>	Human, Gorilla, Hamster
<b>Predicted Reactivity:</b>	Orangutan, Gibbon, Monkey, Mouse, Bat, Dog, Pig
<b>Purification:</b>	Immunoaffinity purified
<b>Presentation:</b>	Tris-buffered saline, pH 7.3, 0.5% BSA, 0.02% sodium azide
<b>Recommended Storage:</b>	Store at -20°C. Minimize freezing and thawing.
<b>Usage Summary:</b>	Peptide ELISA: antibody detection limit dilution 1:64000. Western blot: Approx 65kD band observed in Human and Rat Pancreas lysates (calculated MW of 58.2kD according to NP_006840.2). Recommended concentration: 0.01-0.03 ug/ml.
<b>Uses:</b>	IHC - Paraffin (3.75 µg/ml), Western blot (0.01 - 0.03 µg/ml), ELISA (1:64000) (Optimal dilution to be determined by the researcher)
<b>Size:</b>	50 µg
<b>Concentration:</b>	0.5 mg/ml

**Immunohistochemistry Image:**



Anti-PDIA2 antibody IHC of human pancreas. Immunohistochemistry of formalin-fixed, paraffin-embedded tissue after heat-induced antigen retrieval. Antibody LS-B8357 dilution 3.75 ug/ml.

**Western Blot Image:**



PDIA2 antibody (0.01 ug/ml) staining of Human Pancreas lysate (35 ug protein/ml in RIPA buffer). Primary incubation was 1 hour. Detected by chemiluminescence.

**Requested From:**

Japan

Laboratory Reagent For In Vitro Research Use Only

Not for resale without prior written consent from LifeSpan BioSciences, Inc.

Created on 9/24/2014

© 2014 LifeSpan BioSciences