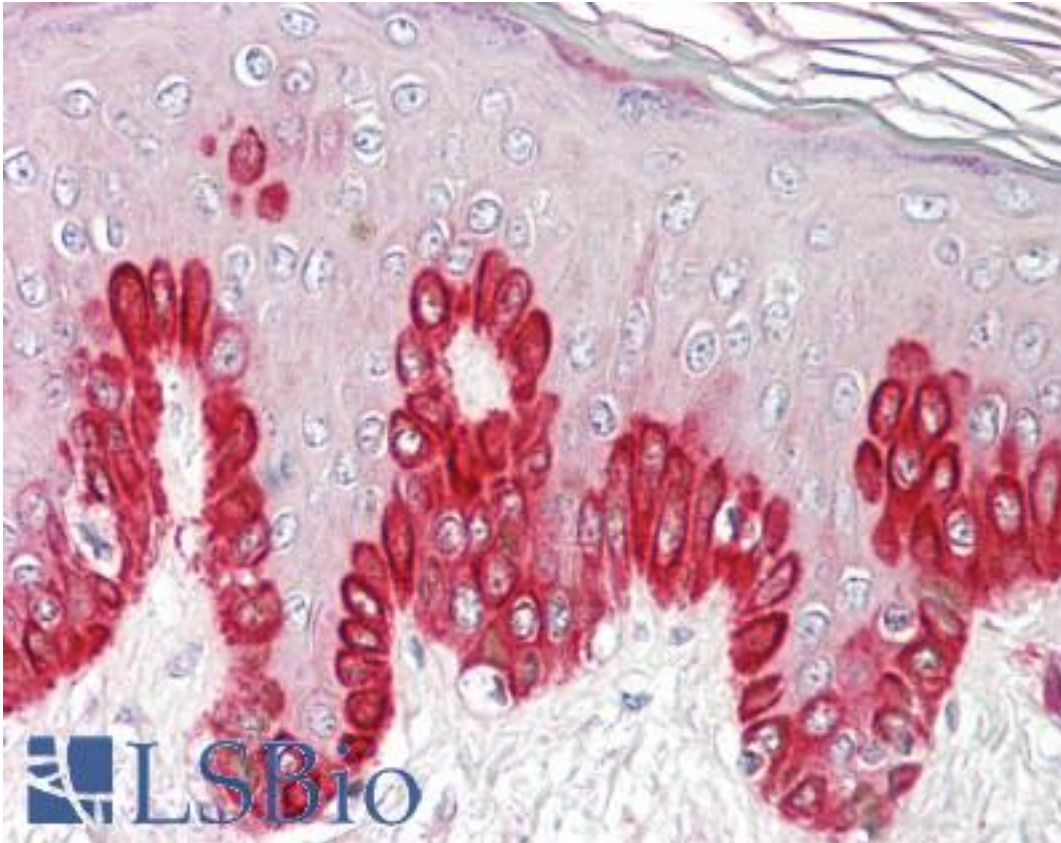


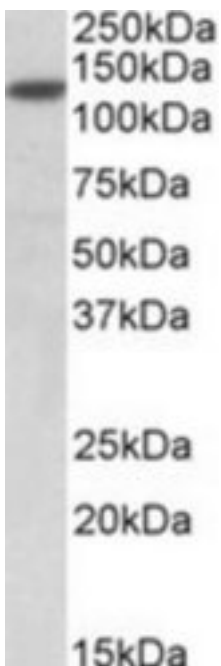
SIRT1 / Sirtuin 1 Goat anti-Human Polyclonal (Internal) Antibody - LS-B8356 - LSBio	
CatalogID:	LS-B8356
Validation:	This antibody replaces catalog number LS-C139765. It has been validated for use in the following assays: IHC-P.
Target:	sirtuin 1 (SIRT1)
Synonyms:	SIRT1 Antibody, SIR2-like protein 1 Antibody, SIR2alpha Antibody, SIR2L1 Antibody, Sirtuin 1 Antibody, Sir2-like 1 Antibody, Sirtuin type 1 Antibody, HSIR2 Antibody, HSIRT1 Antibody
Family / Subfamily:	ADP-Ribosyltransferase / not assigned-ADP-Ribosyltransferase
Host	SIRT1 antibody was produced in Goat
Clonality:	Polyclonal
Immunogen Species:	SIRT1 / Sirtuin 1 antibody was raised against Human
Antigen Type:	Synthetic peptide
Immunogen:	SIRT1 / Sirtuin 1 antibody was raised against synthetic peptide C-EKPQEVQTSRNVES from an internal region of human SIRT1 (NP_036370.2; NP_001135970.1). Percent identity by BLAST analysis: Human, Gorilla, Gibbon, Monkey, Marmoset (100%); Mouse (93%); Rat (86%).
Specificity:	Human SIRT1. This antibody is expected to recognize both reported isoforms (NP_036370.2; NP_001135970.1).
Epitope:	Internal
Reactivity:	Human, Gorilla, Gibbon, Monkey
Predicted Reactivity:	Mouse
Purification:	Immunoaffinity purified
Presentation:	Tris-buffered saline, pH 7.3, 0.5% BSA, 0.02% sodium azide
Recommended Storage:	Store at -20°C. Minimize freezing and thawing.
Usage Summary:	Peptide ELISA: antibody detection limit dilution 1:64000. Western blot: Approx 120kD band observed in lysates of cell line Jurkat (calculated MW of 81.7kD according to NP_036370.2). The observed molecular weight corresponds to earlier findings in literature with different antibodies (Cheng et al, Proc Natl Acad Sci U S A. 2003 Sep 16;100(19):10794-9.; PMID: 12960381). Recommended concentration: 0.05-0.2 ug/ml.
Uses:	IHC - Paraffin (3.75 µg/ml), Western blot (0.05 - 0.2 µg/ml), ELISA (1:64000) (Optimal dilution to be determined by the researcher)
Size:	50 µg
Concentration:	0.5 mg/ml

Immunohistochemistry Image:



Anti-SIRT1 antibody IHC of human skin. Immunohistochemistry of formalin-fixed, paraffin-embedded tissue after heat-induced antigen retrieval. Antibody LS-B8356 dilution 3.75 ug/ml.

Western Blot Image:



SIRT1 antibody (0.05 ug/ml) staining of Jurkat lysate (35 ug protein/ml in RIPA buffer). Primary incubation was 1 hour. Detected by chemiluminescence.

Requested From:	Japan
Laboratory Reagent For In Vitro Research Use Only	
Not for resale without prior written consent from LifeSpan BioSciences, Inc.	
Created on 9/24/2014	
© 2014 LifeSpan BioSciences	