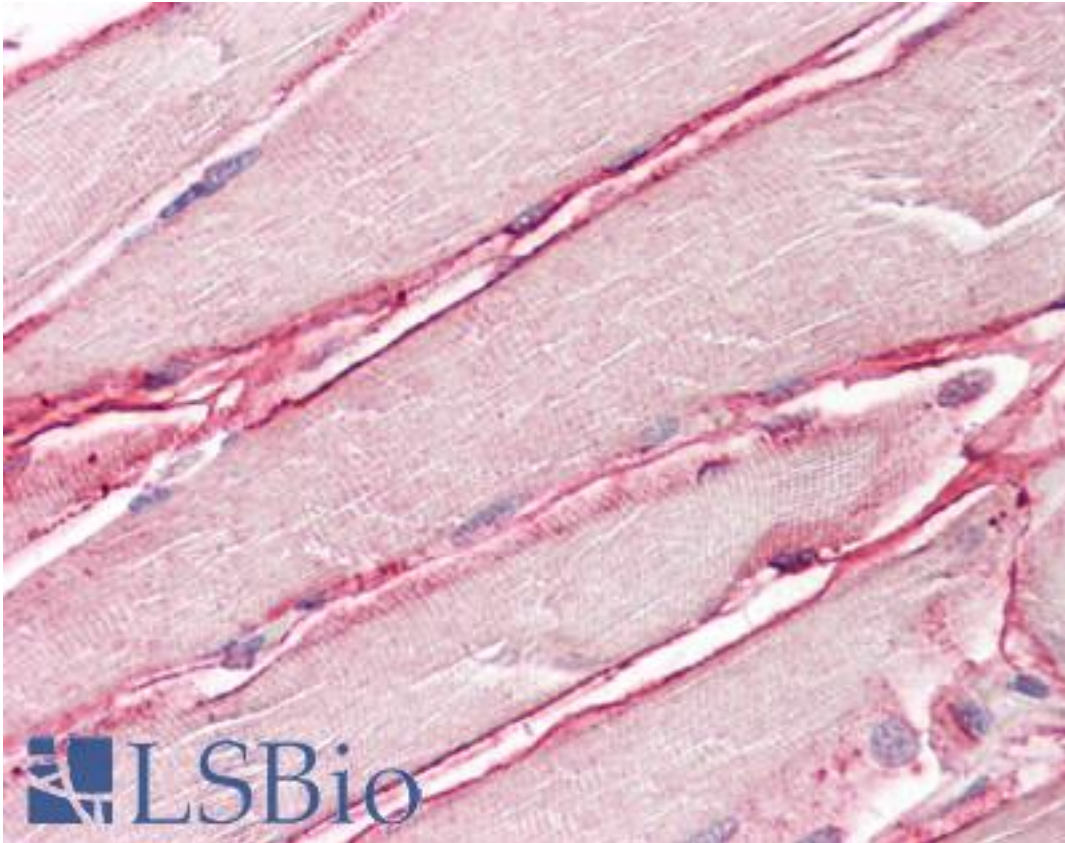


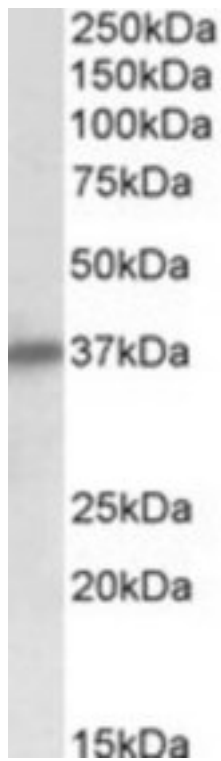
SGCD / Delta-Sarcoglycan Goat anti-Human Polyclonal (Internal) Antibody - LS-B8353 - LSBio	
CatalogID:	LS-B8353
Validation:	This antibody replaces catalog number LS-C139753. It has been validated for use in the following assays: IHC-P.
Target:	sarcoglycan, delta (35kDa dystrophin-associated glycoprotein) (SGCD)
Synonyms:	SGCD Antibody, 35DAG Antibody, Delta-SG Antibody, Placental delta sarcoglycan Antibody, LGMD2F Antibody, SGCDP Antibody, SGD Antibody, SG-delta Antibody, CMD1L Antibody, DAGD Antibody, Delta-sarcoglycan Antibody
Host	SGCD antibody was produced in Goat
Clonality:	Polyclonal
Immunogen Species:	SGCD / Delta-Sarcoglycan antibody was raised against Human
Antigen Type:	Synthetic peptide
Immunogen:	SGCD / Delta-Sarcoglycan antibody was raised against synthetic peptide C-RLPHGSYTPTGTR from an internal region of human SGCD / Delta-Sarcoglycan (NP_000328.2; NP_758447.1; NP_001121681.1). Percent identity by BLAST analysis: Human, Gorilla, Gibbon, Marmoset, Panda, Bovine, Dog, Bat, Horse, Rabbit (100%); Monkey, Mouse, Hamster, Elephant, Pig (92%); Opossum (85%).
Specificity:	Human SGCD / Delta-Sarcoglycan. This antibody is expected to recognize isoform 1 (NP_000328.2) and isoform 3 (NP_001121681.1).
Epitope:	Internal
Reactivity:	Human, Gorilla, Gibbon, Bat, Bovine, Dog, Horse, Rabbit
Predicted Reactivity:	Monkey, Mouse, Hamster, Pig
Purification:	Immunoaffinity purified
Presentation:	Tris-buffered saline, pH 7.3, 0.5% BSA, 0.02% sodium azide
Recommended Storage:	Store at -20°C. Minimize freezing and thawing.
Usage Summary:	Peptide ELISA: antibody detection limit dilution 1:16000. Western blot: Approx 37kD band observed in Human and Rat Heart lysates (calculated MW of 32.2kD according to NP_000328.2). The observed molecular weight corresponds to the glycosylated form. Recommended concentration: 0.1-0.3 ug/ml.
Uses:	IHC - Paraffin (3.75 µg/ml), Western blot (0.1 - 0.3 µg/ml), ELISA (1:16000) (Optimal dilution to be determined by the researcher)
Size:	50 µg
Concentration:	0.5 mg/ml

Immunohistochemistry Image:



Anti-SGCD / Delta-Sarcoglycan antibody IHC of human skeletal muscle.
Immunohistochemistry of formalin-fixed, paraffin-embedded tissue after heat-induced antigen retrieval. Antibody LS-B8353 dilution 3.75 ug/ml.

Western Blot Image:



SGCD antibody (0.1 ug/ml) staining of Human Heart lysate (35 ug protein/ml in RIPA buffer). Primary incubation was 1 hour. Detected by chemiluminescence.

Requested From:

Japan

Laboratory Reagent For In Vitro Research Use Only

Not for resale without prior written consent from LifeSpan BioSciences, Inc.

Created on 9/24/2014

© 2014 LifeSpan BioSciences