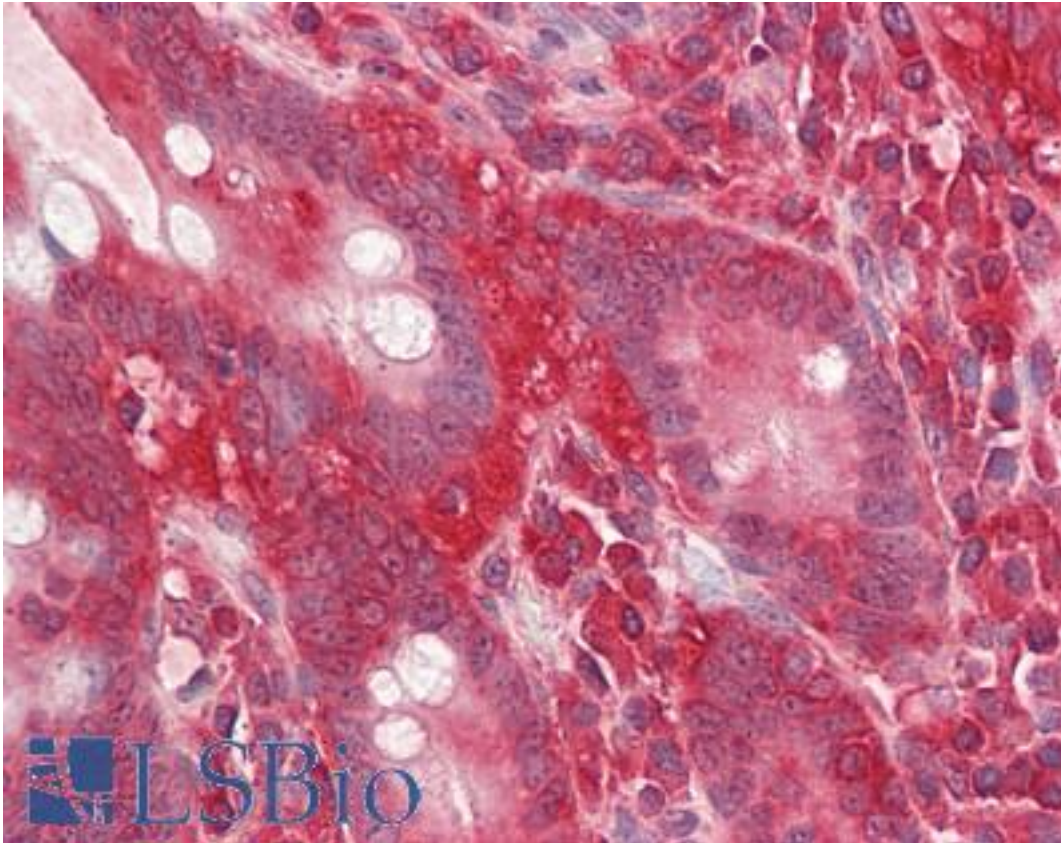


GNB2L1 / RACK1 Goat anti-Human Polyclonal (Internal) Antibody - LS-B8352 - LSBio	
CatalogID:	LS-B8352
Validation:	This antibody replaces catalog number LS-C139796. It has been validated for use in the following assays: IHC-P.
Target:	Guanine nucleotide binding protein (G protein), beta polypeptide 2-like 1 (GNB2L1)
Synonyms:	GNB2L1 Antibody, H12.3 Antibody, Gnb2-rs1 Antibody, Proliferation-inducing gene 21 Antibody, RACK1 Antibody, HLC-7 Antibody, Lung cancer oncogene 7 Antibody, PIG21 Antibody
Host	GNB2L1 antibody was produced in Goat
Clonality:	Polyclonal
Immunogen Species:	GNB2L1 / RACK1 antibody was raised against Human
Antigen Type:	Synthetic peptide
Immunogen:	GNB2L1 / RACK1 antibody was raised against synthetic peptide NTLGVCKYTVQDESH from an internal region of human GNB2L1 / RACK1 (NP_006089.1). Percent identity by BLAST analysis: Human, Gorilla, Gibbon, Monkey, Marmoset, Mouse, Rat, Hamster, Elephant, Dog, Bat, Bovine, Horse, Pig, Opossum, Turkey, Chicken, Platypus, Lizard, Xenopus (100%); Rabbit, Salmon, Smelt, Pike (93%); Catfish, Sablefish, Stickleback, Pufferfish, Zebrafish (87%); Sea anemone (80%).
Specificity:	Human GNB2L1 / RACK1.
Epitope:	Internal
Reactivity:	Human, Gorilla, Gibbon, Monkey, Mouse, Rat, Bat, Bovine, Dog, Hamster, Horse, Pig, Chicken, Xenopus
Predicted Reactivity:	Rabbit
Purification:	Immunoaffinity purified
Presentation:	Tris-buffered saline, pH 7.3, 0.5% BSA, 0.02% sodium azide
Recommended Storage:	Store at -20°C. Minimize freezing and thawing.
Usage Summary:	Peptide ELISA: antibody detection limit dilution 1:128000. Western blot: Approx 33kD band observed in Human Lymph Nodes and Mouse and Rat Spleen lysates (calculated MW of 35.1kD according to NP_006089.1). Recommended concentration: 0.1-0.3 ug/ml.
Uses:	IHC - Paraffin (3.75 µg/ml), Western blot (0.1 - 0.3 µg/ml), ELISA (1:128000) (Optimal dilution to be determined by the researcher)
Size:	50 µg
Concentration:	0.5 mg/ml

Immunohistochemistry Image:



Anti-GNB2L1 / RACK1 antibody IHC of human small intestine. Immunohistochemistry of formalin-fixed, paraffin-embedded tissue after heat-induced antigen retrieval. Antibody LS-B8352 dilution 3.75 ug/ml.

Western Blot Image:



GNB2L1 antibody (0.1 ug/ml) staining of Human Lymph Node lysate (35 ug protein/ml in RIPA buffer). Primary incubation was 1 hour. Detected by chemiluminescence.

Requested From:

Japan

Laboratory Reagent For In Vitro Research Use Only

Not for resale without prior written consent from LifeSpan BioSciences, Inc.

Created on 9/24/2014

© 2014 LifeSpan BioSciences