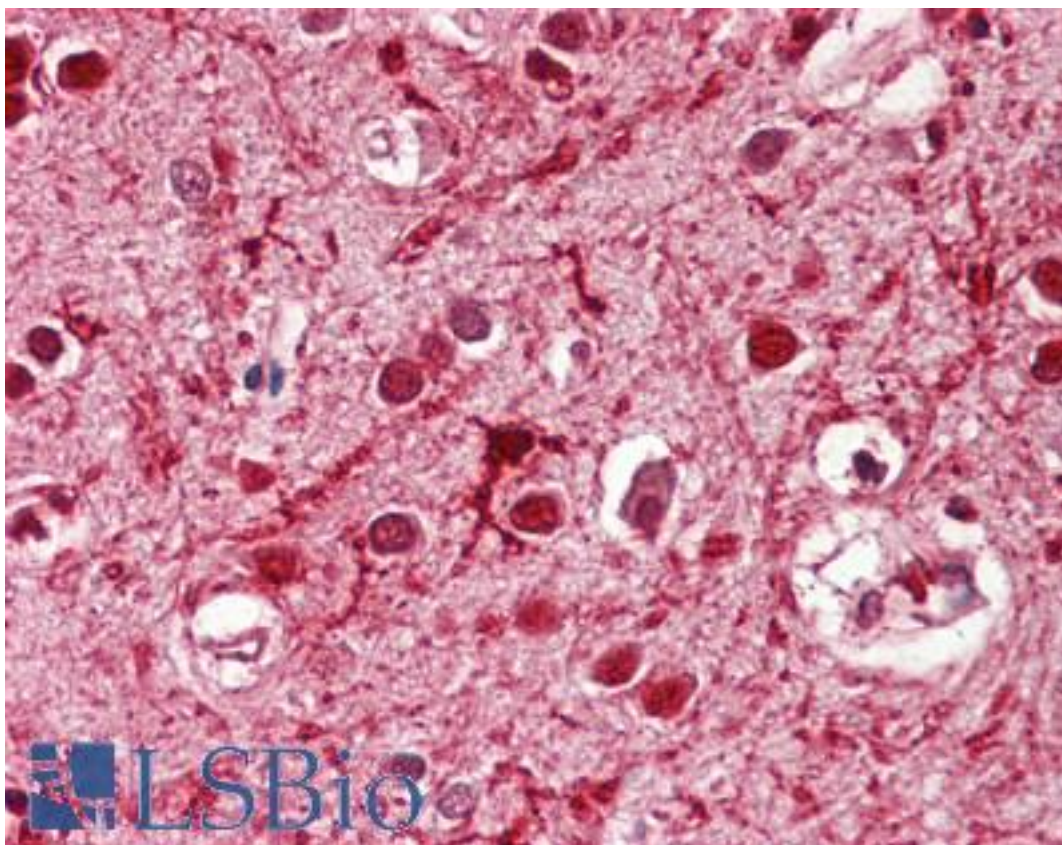


ASCL3 Goat anti-Mouse Polyclonal (Internal) Antibody - LS-B8350 - LSBio

| | |
|------------------------------|---|
| CatalogID: | LS-B8350 |
| Validation: | This antibody replaces catalog number LS-C139724. It has been validated for use in the following assays: IHC-P. |
| Target: | achaete-scute family bHLH transcription factor 3 (ASCL3) |
| Synonyms: | ASCL3 Antibody, ASH-3 Antibody, Achaete-scute homolog 3 Antibody, HASH3 Antibody, SGN1 Antibody, BHLHa42 Antibody |
| Host | ASCL3 antibody was produced in Goat |
| Clonality: | Polyclonal |
| Immunogen Species: | ASCL3 antibody was raised against Mouse |
| Antigen Type: | Synthetic peptide |
| Immunogen: | ASCL3 antibody was raised against synthetic peptide C-HLPEDYLEKRLSK from an internal region of human ASCL3 (NP_064435.1). Percent identity by BLAST analysis: Mouse, Rat (100%); Human, Gibbon, Monkey, Marmoset, Hamster, Elephant, Panda, Dog, Bovine, Bat, Horse, Rabbit, Opossum, Platypus (92%); Pig, Turkey, Chicken, Lizard (85%). |
| Specificity: | Human ASCL3. |
| Epitope: | Internal |
| Reactivity: | Mouse, Human, Rat |
| Predicted Reactivity: | Gibbon, Monkey, Bat, Bovine, Dog, Hamster, Horse, Rabbit |
| Purification: | Immunoaffinity purified |
| Presentation: | Tris-buffered saline, pH 7.3, 0.5% BSA, 0.02% sodium azide |
| Recommended Storage: | Store at -20°C. Minimize freezing and thawing. |
| Usage Summary: | Peptide ELISA: antibody detection limit dilution 1:8000. Western blot: Approx 20kD band observed in Human and Mouse Liver lysates (calculated MW of 20.2kD according to NP_064435.1). Recommended concentration: 0.1-0.3 ug/ml. |
| Uses: | IHC - Paraffin (3.75 µg/ml), Western blot (0.1 - 0.3 µg/ml), ELISA (1:8000) (Optimal dilution to be determined by the researcher) |
| Size: | 50 µg |
| Concentration: | 0.5 mg/ml |

Immunohistochemistry Image:



Anti-ASCL3 antibody IHC of human brain, cortex. Immunohistochemistry of formalin-fixed, paraffin-embedded tissue after heat-induced antigen retrieval. Antibody LS-B8350 dilution 3.75 ug/ml.

Western Blot Image:



ASCL3 antibody (0.1 ug/ml) staining of Human Liver lysate (35 ug protein/ml in RIPA buffer). Primary incubation was 1 hour. Detected by chemiluminescence.

Requested From:

Japan

Laboratory Reagent For In Vitro Research Use Only

Not for resale without prior written consent from LifeSpan BioSciences, Inc.

Created on 9/24/2014

© 2014 LifeSpan BioSciences