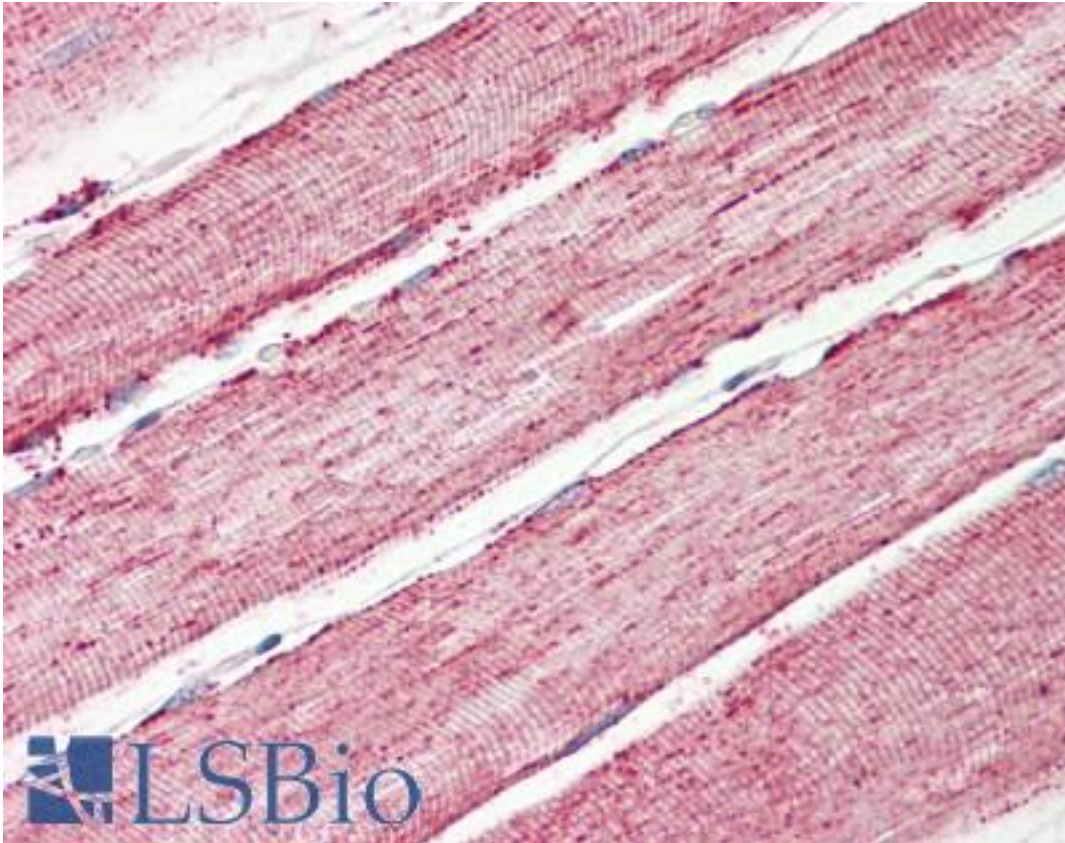


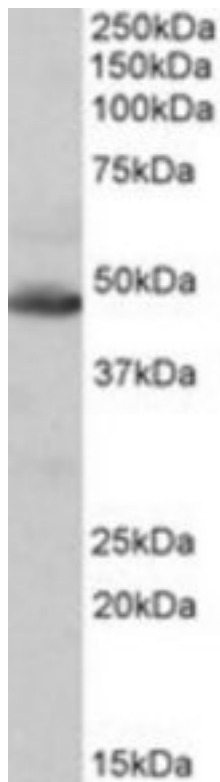
IDH / IDH2 Goat anti-Human Polyclonal (Internal) Antibody - LS-B8349 - LSBio	
CatalogID:	LS-B8349
Validation:	This antibody replaces catalog number LS-C139692. It has been validated for use in the following assays: IHC-P.
Target:	isocitrate dehydrogenase 2 (NADP+), mitochondrial (IDH2)
Synonyms:	IDH2 Antibody, D2HGA2 Antibody, ICD-M Antibody, IDP Antibody, IDPM Antibody, MNADP-IDH Antibody, NADP(+)-specific ICDH Antibody, IDH Antibody, IDHM Antibody, Isocitrate dehydrogenase Antibody, Oxalosuccinate decarboxylase Antibody
Host	IDH2 antibody was produced in Goat
Clonality:	Polyclonal
Immunogen Species:	IDH / IDH2 antibody was raised against Human
Antigen Type:	Synthetic peptide
Immunogen:	IDH / IDH2 antibody was raised against synthetic peptide CIHGLSNVKLNE from an internal region of human IDH2 (NP_002159.2). Percent identity by BLAST analysis: Human, Gorilla, Gibbon, Monkey, Marmoset, Mouse, Rat, Hamster, Elephant, Panda, Dog, Bat, Bovine, Horse, Rabbit, Pig, Opossum, Platypus (100%); Chicken, Stickleback, Pufferfish, Seq squirt (92%); Smelt, Pike, Zebrafish (83%).
Specificity:	Human IDH2.
Epitope:	Internal
Reactivity:	Human, Gorilla, Gibbon, Monkey, Mouse, Rat, Bat, Bovine, Dog, Hamster, Horse, Pig, Rabbit
Predicted Reactivity:	Chicken
Purification:	Immunoaffinity purified
Presentation:	Tris-buffered saline, pH 7.3, 0.5% BSA, 0.02% sodium azide
Recommended Storage:	Store at -20°C. Minimize freezing and thawing.
Usage Summary:	Peptide ELISA: antibody detection limit dilution 1:16000. Western blot: Approx 48kD band observed in Human, Mouse and Rat Heart lysates (calculated MW of 50.9kD according to NP_002159.2). Recommended concentration: 0.1-0.3 ug/ml.
Uses:	IHC - Paraffin (3.75 µg/ml), Western blot (0.1 - 0.3 µg/ml), ELISA (1:16000) (Optimal dilution to be determined by the researcher)
Size:	50 µg
Concentration:	0.5 mg/ml

Immunohistochemistry Image:



Anti-IDH / IDH2 antibody IHC of human skeletal muscle. Immunohistochemistry of formalin-fixed, paraffin-embedded tissue after heat-induced antigen retrieval. Antibody LS-B8349 dilution 3.75 ug/ml.

Western Blot Image:



IDH2 antibody (0.1 ug/ml) staining of Human Heart lysate (35 ug protein/ml in RIPA buffer).
Primary incubation was 1 hour. Detected by chemiluminescence.

Requested From:

Japan

Laboratory Reagent For In Vitro Research Use Only

Not for resale without prior written consent from LifeSpan BioSciences, Inc.

Created on 9/24/2014

© 2014 LifeSpan BioSciences