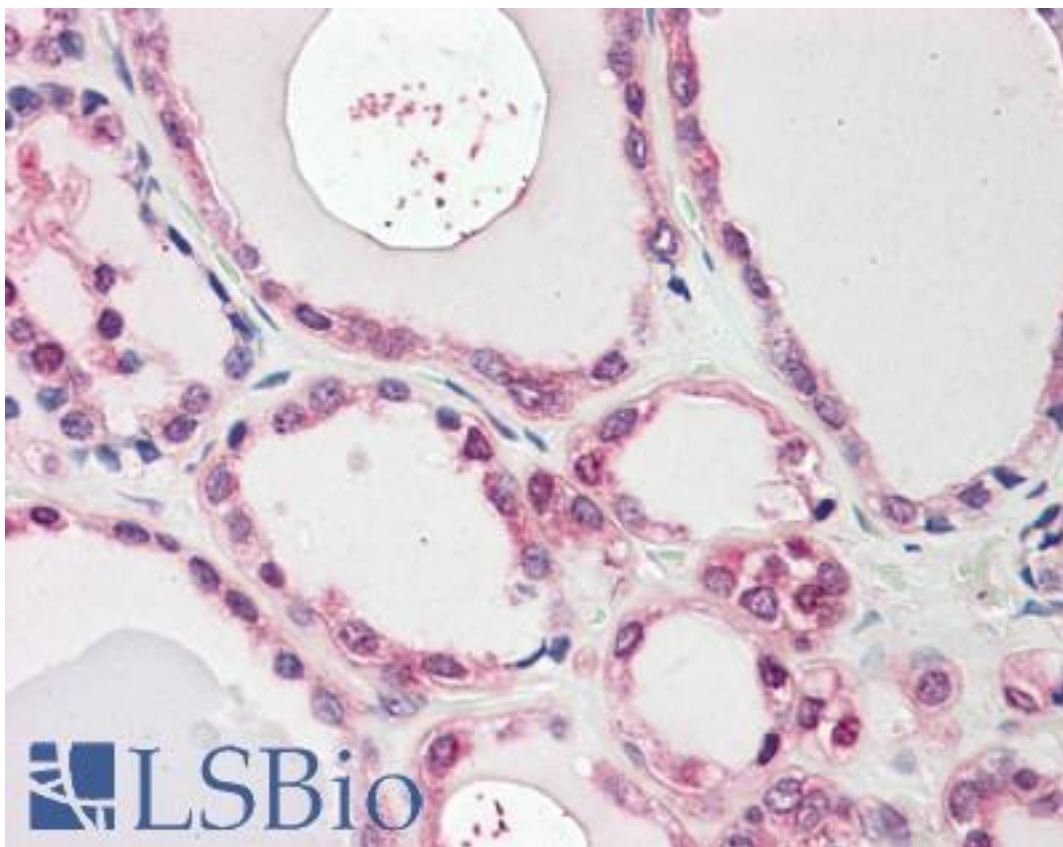


NEK7 Goat anti-Human Polyclonal (Internal) Antibody - LS-B8348 - LSBio

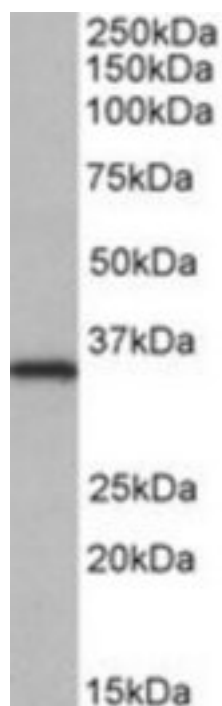
CatalogID:	LS-B8348
Validation:	This antibody replaces catalog number LS-C139690. It has been validated for use in the following assays: IHC-P.
Target:	NIMA-related kinase 7 (NEK7)
Synonyms:	NEK7 Antibody, NimA-related protein kinase 7 Antibody, NIMA-related kinase 7 Antibody
Family / Subfamily:	Protein Kinase / NEK
Host	NEK7 antibody was produced in Goat
Clonality:	Polyclonal
Immunogen Species:	NEK7 antibody was raised against Human
Antigen Type:	Synthetic peptide
Immunogen:	NEK7 antibody was raised against synthetic peptide C-NTLANFRIEKK from an internal region of human NEK7 (NP_598001.1). Percent identity by BLAST analysis: Human, Gibbon, Monkey, Marmoset, Mouse, Rat, Hamster, Elephant, Panda, Bovine, Dog, Bat, Horse, Rabbit, Pig, Opossum, Turkey, Chicken (100%); Xenopus (91%); Salmon, Stickleback, Pufferfish, Zebrafish (82%).
Specificity:	Human NEK7.
Epitope:	Internal
Reactivity:	Human, Gibbon, Monkey, Mouse, Rat, Bat, Bovine, Dog, Hamster, Horse, Pig, Rabbit, Chicken
Predicted Reactivity:	Xenopus
Purification:	Immunoaffinity purified
Presentation:	Tris-buffered saline, pH 7.3, 0.5% BSA, 0.02% sodium azide
Recommended Storage:	Store at -20°C. Minimize freezing and thawing.
Usage Summary:	Peptide ELISA: antibody detection limit dilution 1:64000. Western blot: Approx 35kD band observed in lysates of cell line HeLa (calculated MW of 34.6kD according to NP_598001.1). Recommended concentration: 0.05-0.2 ug/ml.
Uses:	IHC - Paraffin (3.75 µg/ml), Western blot (0.05 - 0.2 µg/ml), ELISA (1:64000) (Optimal dilution to be determined by the researcher)
Size:	50 µg
Concentration:	0.5 mg/ml

Immunohistochemistry Image:



Anti-NEK7 antibody IHC of human thyroid. Immunohistochemistry of formalin-fixed, paraffin-embedded tissue after heat-induced antigen retrieval. Antibody LS-B8348 dilution 3.75 ug/ml.

Western Blot Image:



NEK7 antibody (0.05 ug/ml) staining of HeLa lysate (35 ug protein/ml in RIPA buffer). Primary incubation was 1 hour. Detected by chemiluminescence.

Requested From:

Japan

Laboratory Reagent For In Vitro Research Use Only

Not for resale without prior written consent from LifeSpan BioSciences, Inc.

Created on 9/24/2014

© 2014 LifeSpan BioSciences