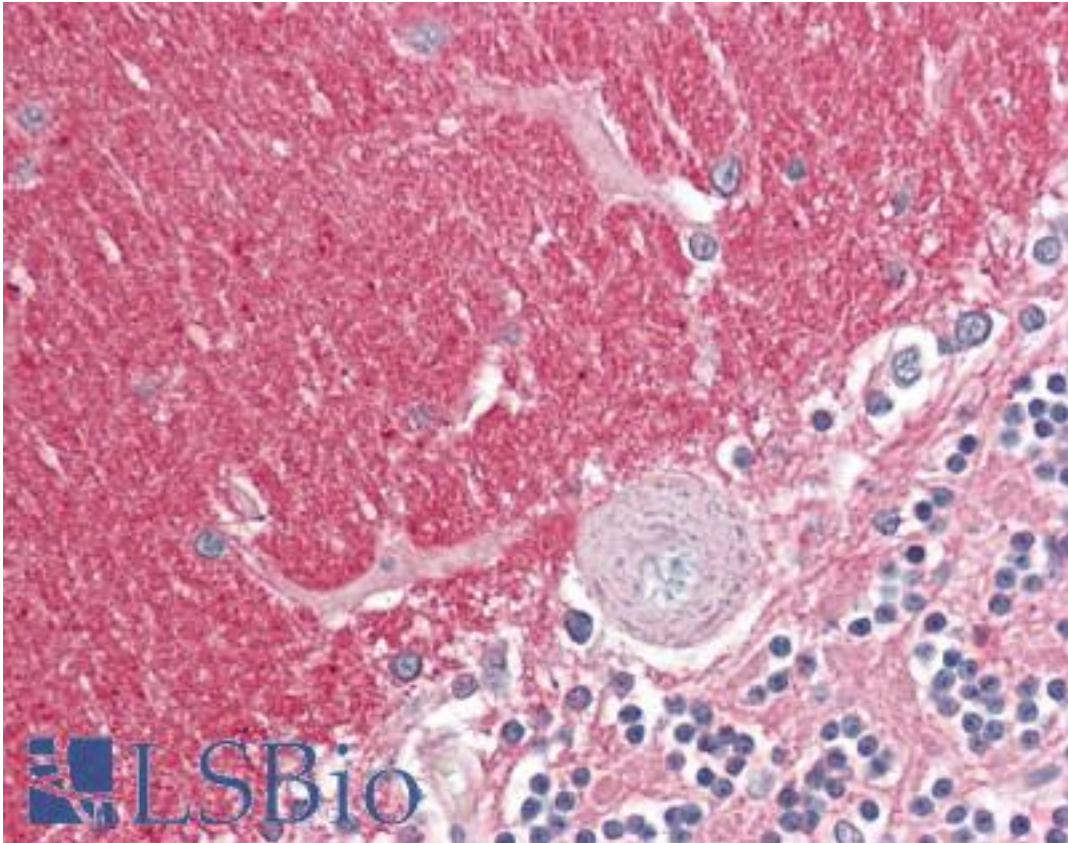


GNB3 Goat anti-Human Polyclonal (Internal) Antibody - LS-B8347 - LSBio

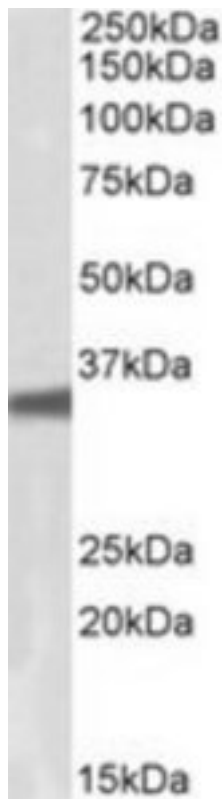
CatalogID:	LS-B8347
Validation:	This antibody replaces catalog number LS-C139672. It has been validated for use in the following assays: IHC-P.
Target:	guanine nucleotide binding protein (G protein), beta polypeptide 3 (GNB3)
Synonyms:	GNB3 Antibody, G protein, beta-3 subunit Antibody, Transducin beta chain 3 Antibody
Host	GNB3 antibody was produced in Goat
Clonality:	Polyclonal
Immunogen Species:	GNB3 antibody was raised against Human
Antigen Type:	Synthetic peptide
Immunogen:	GNB3 antibody was raised against synthetic peptide SGHDNRVSLGVT from an internal region of human GNB3 (NP_002066.1, NP_067642.1). Percent identity by BLAST analysis: Human, Gorilla, Gibbon, Monkey, Marmoset, Mouse, Rat, Panda, Bovine, Bat, Dog, Horse, Rabbit, Pig, Turkey, Chicken, Xenopus (100%); Hamster, Elephant, Opossum, Lizard, Catfish, Salmon, Stickleback, Medaka, Pufferfish, Zebrafish, Drosophila, Nematode (92%).
Specificity:	Human GNB3. This antibody is expected to recognize GNB3 & GNB4 (GeneID: 2784, 59345; ProteinID: NP_002066.1; NP_067642.1).
Epitope:	Internal
Reactivity:	Human, Gorilla, Gibbon, Monkey, Mouse, Rat, Bat, Bovine, Dog, Horse, Pig, Rabbit, Chicken, Xenopus
Predicted Reactivity:	Hamster, Zebrafish, Drosophila
Purification:	Immunoaffinity purified
Presentation:	Tris-buffered saline, pH 7.3, 0.5% BSA, 0.02% sodium azide
Recommended Storage:	Store at -20°C. Minimize freezing and thawing.
Usage Summary:	Peptide ELISA: antibody detection limit dilution 1:16000. Western blot: Approx 35kD band observed in lysates of cell line HepG2 (calculated MW of 37.2kD according to NP_002066.1. Recommended concentration: 0.1-0.3 ug/ml.
Uses:	IHC - Paraffin (3.75 µg/ml), Western blot (0.1 - 0.3 µg/ml), ELISA (1:16000) (Optimal dilution to be determined by the researcher)
Size:	50 µg
Concentration:	0.5 mg/ml

Immunohistochemistry Image:



Anti-GNB3 antibody IHC of human brain, cerebellum. Immunohistochemistry of formalin-fixed, paraffin-embedded tissue after heat-induced antigen retrieval. Antibody LS-B8347 dilution 3.75 ug/ml.

Western Blot Image:



GNB3 antibody (0.1 ug/ml) staining of HepG2 lysate (35 ug protein/ml in RIPA buffer). Primary incubation was 1 hour. Detected by chemiluminescence.

Requested From:

Japan

Laboratory Reagent For In Vitro Research Use Only

Not for resale without prior written consent from LifeSpan BioSciences, Inc.

Created on 9/24/2014

© 2014 LifeSpan BioSciences